

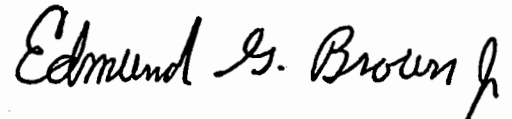
PREFACE

This off-year registration report, prepared under authority of Sections 458 and 6460 of the California Elections Code, shows voter registration in the state as of January 1, 1973.

The totals were compiled after the post-election purge of voters who failed to cast ballots in the November 1972 general election. The registration figures reflect approximate voter turnout by party at that election.

A brief analytical section is included in this report to provide a more complete view of the state's registration patterns.

The next registration report will be published in February 1974 and will reflect political party strength as of January 1, 1974, the beginning of the election year.



EDMUND G. BROWN JR.
Secretary of State

Table 1 shows current voter registration in California and depicts the registration decline since the November general election. Figure 1 (page 4) shows the number of voters in each of the qualified political parties and other voter categories both as of January 1973 and in each of the preceding 11 years. Figure 2 (page 5) shows the same information expressed in percentages.

Table 1
REGISTRATION—STATEWIDE

	<i>Registration 1-1-73</i>		<i>Registration 10-8-72</i>		<i>Percent Loss</i>
American Independent ---	34,456	0.40%	47,341	0.45%	27.22%
Democratic	4,751,395	55.23%	5,864,745	56.04%	18.98%
Peace and Freedom	34,947	0.41%	58,720	0.56%	40.49%
Republican	3,300,972	38.37%	3,840,620	36.70%	14.05%
Miscellaneous	20,663	0.24%	38,972	0.37%	46.98%
Declined to State	460,912	5.36%	615,817	5.88%	25.15%
TOTAL	8,603,345		10,466,215		17.79%

Figures 1 and 2 show that the vast majority of California voters (93.6%) have remained affiliated with Democratic and Republican parties. Figure 2 indicates that both parties continue slightly below their average since 1962 for January Reports of Registrations. Currently, Democratic registration is 2.5 percent under its high point of 57.7 percent achieved in 1966. Republican registration is 4 percent down from its high point of 42.4 percent reached in 1967. For their respective 11-year averages, the Democratic party is off 0.2 percent from its average of 55.4 percent, and the Republican party is off 1.9 percent from its average of 40.3 percent.

Voters affiliated with parties other than the Democratic or Republican parties have declined to 1.0 percent from their high point of 3.5 percent of all registration in 1968. Voters not affiliated with any party have reached a high of 5.4 percent, up 2.2 percent from the 11-year average of 3.2 percent.

Figure 3 compares an estimate of the percent of eligible population registered to vote as of January 1963, with an estimate of the population registered to vote as of January 1973. Both figures have been adjusted to exclude non-citizens.

Approximately 5.31 million eligible Californians remain either not registered or purged for failure to vote.

FIGURE 1

REGISTERED VOTERS, JANUARY, 1962-1973

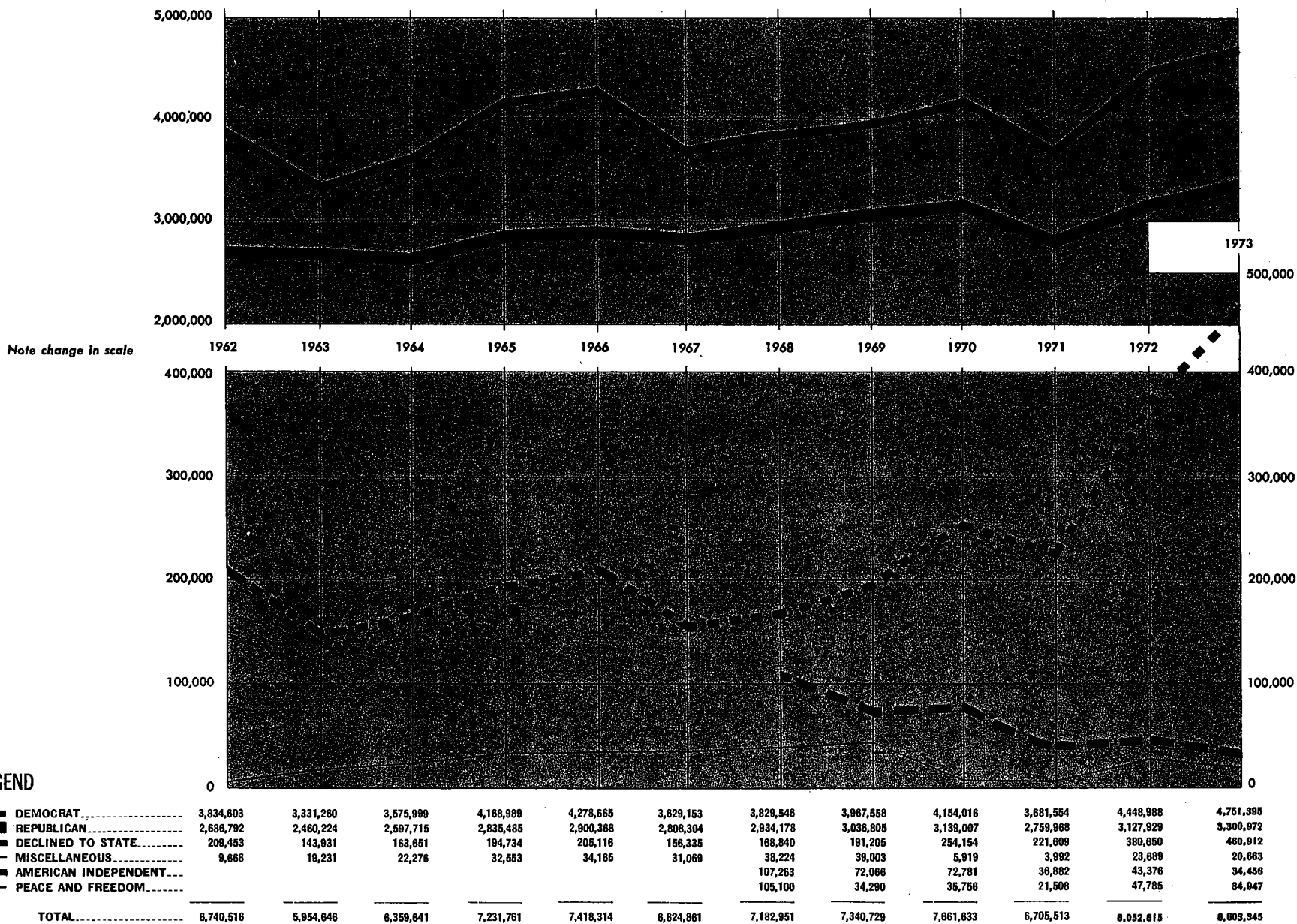
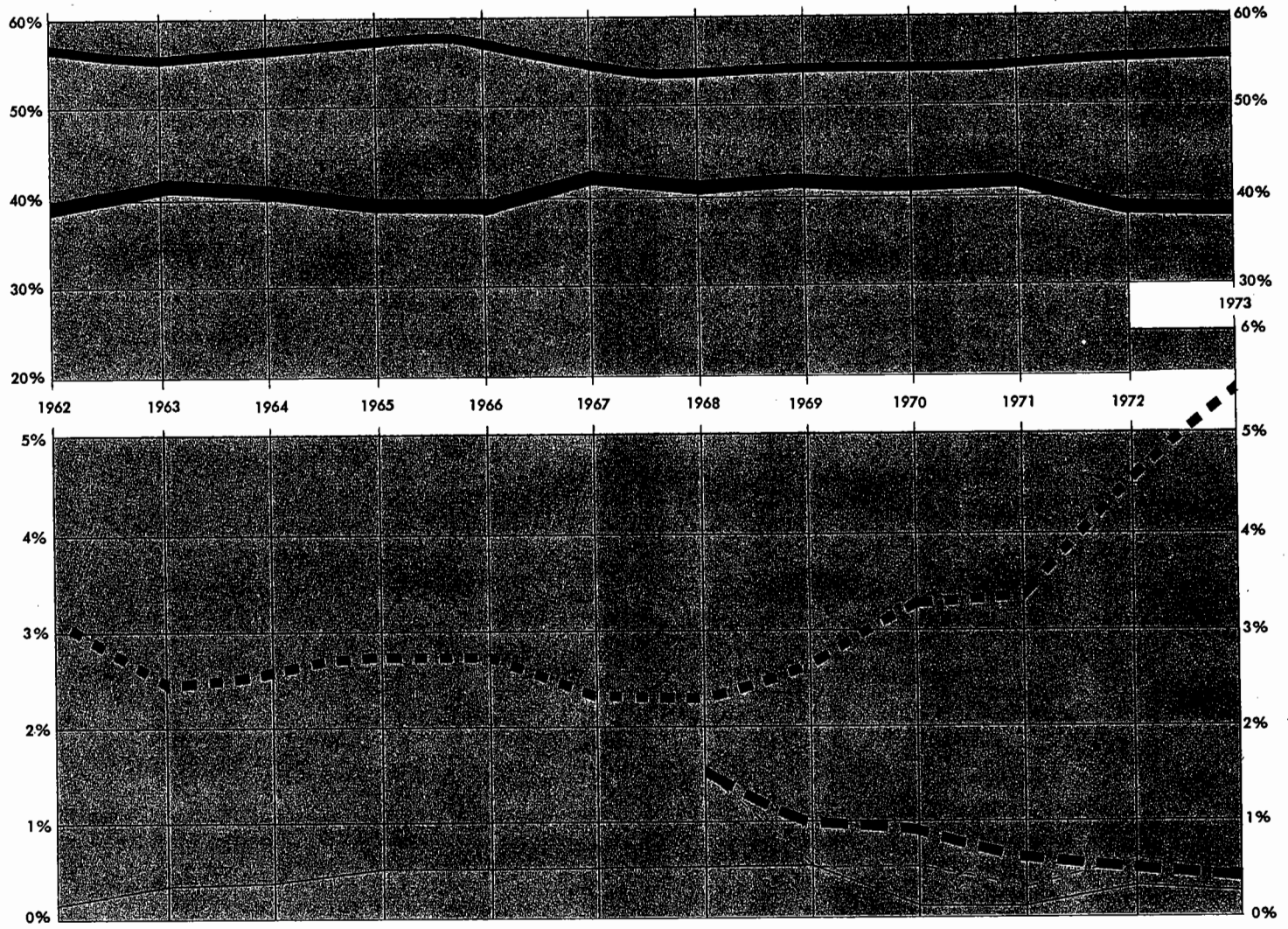


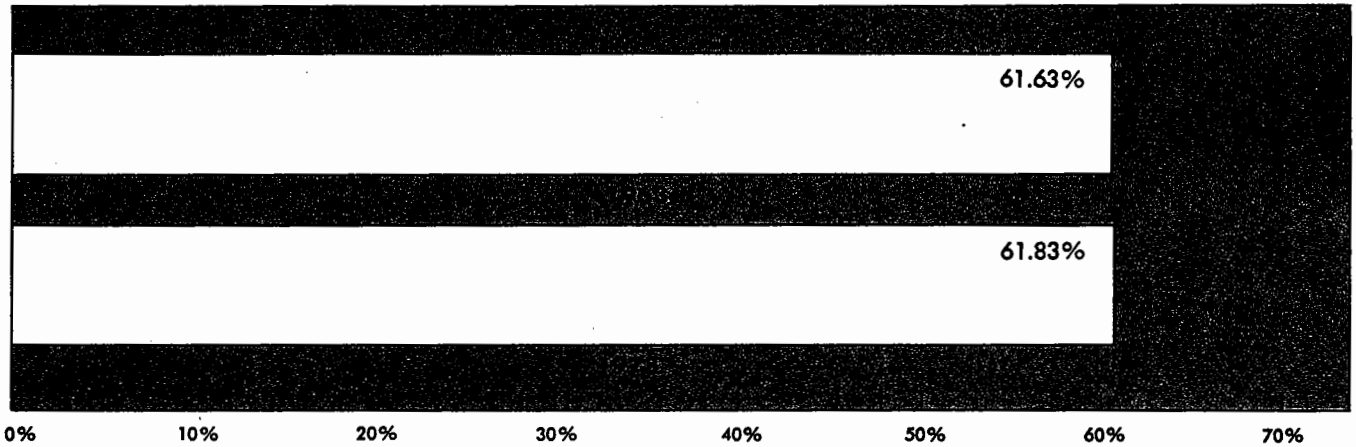
FIGURE 2 PERCENT STATEWIDE REGISTRATION, JANUARY, 1962-1973



LEGEND

DEMOCRAT.....	56.9	55.9	56.2	57.6	57.7	54.8	53.3	54.0	54.2	54.6	55.2	55.2
REPUBLICAN.....	39.7	41.3	40.9	39.2	39.1	42.4	40.8	41.4	41.0	41.2	38.8	38.4
DECLINED TO STATE.....	3.1	2.4	2.6	2.7	2.7	2.3	2.3	2.6	3.3	3.3	4.5	5.4
MISCELLANEOUS.....	.1	.3	.4	.5	.5	.5	.5	.5	.1	.1	.3	.2
AMERICAN INDEPENDENT.....						1.5	1.5	1.0	.9	.6	.5	.4
PEACE AND FREEDOM.....						1.5	1.5	.8	.5	.3	.6	.4

FIGURE 3
PERCENT OF ELIGIBLE POPULATION REGISTERED TO VOTE, 1963 and 1973



REPORT OF REGISTRATION—BY COUNTIES

COUNTIES	Democratic	Republican	American Independent	Peace and Freedom	Miscellaneous	Declined to State	Total
ALAMEDA----- PERCENTAGES-----	311,493 64.5	138,501 28.7	1,058 .2	2,585 .5	825 .2	28,452 5.9	482,914
ALPINE----- PERCENTAGES-----	213 35.9	335 56.4	0	4 .7	0	42 7.1	594
AMADOR----- PERCENTAGES-----	4,084 60.1	2,496 36.7	20 .3	4 .1	4 .1	192 2.8	6,800
BUTTE----- PERCENTAGES-----	25,884 50.7	22,198 43.5	245 .5	253 .5	28 .1	2,476 4.8	51,084
CALAVERAS----- PERCENTAGES-----	3,819 53.7	2,993 42.1	44 .6	23 .3	0	227 3.2	7,106
COLUSA----- PERCENTAGES-----	2,663 55.3	2,017 41.9	4 .1	0	0	129 2.7	4,813
CONTRA COSTA----- PERCENTAGES-----	149,818 56.4	102,334 38.5	804 .3	757 .3	108	11,733 4.4	265,554
DEL NORTE----- PERCENTAGES-----	3,201 55.7	2,218 38.6	16 .3	8 .1	4 .1	304 5.3	5,751
EL DORADO----- PERCENTAGES-----	11,348 52.9	8,601 40.1	189 .9	59 .3	3	1,248 5.8	21,448
FRESNO----- PERCENTAGES-----	102,507 62.8	53,794 33.0	1,115 .7	341 .2	163 .1	5,213 3.2	163,133
GLENN----- PERCENTAGES-----	4,398 55.4	3,228 40.6	64 .8	14 .2	0	238 3.0	7,942

REPORT OF REGISTRATION—BY COUNTIES

COUNTIES	Democratic	Republican	American Independent	Peace and Freedom	Miscellaneous	Declined to State	Total
HUMBOLDT-----	27,992	16,023	79	279	16	2,707	47,096
PERCENTAGES-----	59.4	34.0	.2	.6		5.7	
IMPERIAL-----	12,952	9,343	40	69	45	1,212	23,661
PERCENTAGES-----	54.7	39.5	.2	.3	.2	5.1	
INYO-----	3,693	3,340	32	24	1	291	7,381
PERCENTAGES-----	50.0	45.3	.4	.3		3.9	
KERN-----	71,368	46,469	1,209	148	83	3,726	123,003
PERCENTAGES-----	58.0	37.8	1.0	.1	.1	3.0	
KINGS-----	12,190	6,584	58	20	4	702	19,558
PERCENTAGES-----	62.3	33.7	.3	.1		3.6	
LAKE-----	6,602	4,959	52	6	1	427	12,047
PERCENTAGES-----	54.8	41.2	.4			3.5	
LASSEN-----	4,800	2,297	29	7	0	339	7,472
PERCENTAGES-----	64.2	30.7	.4	.1		4.5	
LOS ANGELES-----	1,646,840	1,063,619	12,617	12,318	12,218	148,647	2,896,259
PERCENTAGES-----	56.9	36.7	.4	.4	.4	5.1	
MADERA-----	9,493	5,540	84	6	10	285	15,418
PERCENTAGES-----	61.6	35.9	.5		.1	1.8	
MARIN-----	53,599	44,112	126	563	42	8,830	107,272
PERCENTAGES-----	50.0	41.1	.1	.5		8.2	
MARIPOSA-----	1,854	1,642	15	8	1	178	3,698
PERCENTAGES-----	50.1	44.4	.4	.2		4.8	

REPORT OF REGISTRATION—BY COUNTIES

COUNTIES	Democratic	Republican	American Independent	Peace and Freedom	Miscellaneous	Declined to State	Total
MENDOCINO-----	12,746	8,332	92	147	12	1,280	22,609
PERCENTAGES-----	56.4	36.9	.4	.7	.1	5.7	
MERCED-----	20,655	10,909	139	77	18	1,364	33,162
PERCENTAGES-----	62.3	32.9	.4	.2	.1	4.1	
MODOC-----	2,050	1,504	9	0	2	112	3,677
PERCENTAGES-----	55.8	40.9	.2		.1	3.0	
MONO-----	1,266	1,429	19	28	0	156	2,898
PERCENTAGES-----	43.7	49.3	.7	1.0		5.4	
MONTEREY-----	44,678	34,422	387	476	37	4,921	84,921
PERCENTAGES-----	52.6	40.5	.5	.6		5.8	
NAPA-----	21,864	16,524	184	134	10	1,601	40,317
PERCENTAGES-----	54.2	41.0	.5	.3		4.0	
NEVADA-----	7,667	6,827	39	23	0	634	15,190
PERCENTAGES-----	50.5	44.9	.3	.2		4.2	
ORANGE-----	283,501	349,351	3,554	1,989	540	42,627	681,562
PERCENTAGES-----	41.6	51.3	.5	.3	.1	6.3	
PLACER-----	22,233	13,891	186	138	4	1,473	37,925
PERCENTAGES-----	58.6	36.6	.5	.4		3.9	
PLUMAS-----	4,094	2,117	35	39	0	273	6,558
PERCENTAGES-----	62.4	32.3	.5	.6		4.2	
RIVERSIDE-----	99,407	84,592	773	555	244	9,218	194,789
PERCENTAGES-----	51.0	43.4	.4	.3	.1	4.7	

REPORT OF REGISTRATION—BY COUNTIES

COUNTIES	Democratic	Republican	American Independent	Peace and Freedom	Miscellaneous	Declined to State	Total
SACRAMENTO----- PERCENTAGES-----	181,241 61.0	99,588 33.5	1,275 .4	1,553 .5	229 .1	13,022 4.4	296,908
SAN BENITO----- PERCENTAGES-----	4,038 57.0	2,780 39.3	41 .6	10 .1	22 .3	189 2.7	7,080
SAN BERNARDINO----- PERCENTAGES-----	132,348 53.1	103,554 41.5	1,478 .6	509 .2	409 .2	10,957 4.4	249,255
SAN DIEGO----- PERCENTAGES-----	288,062 47.1	275,305 45.0	2,616 .4	2,149 .4	1,473 .2	42,028 6.9	611,633
SAN FRANCISCO----- PERCENTAGES-----	213,791 66.6	84,178 26.2	488 .2	2,067 .6	60	20,462 6.4	321,046
SAN JOAQUIN----- PERCENTAGES-----	65,964 57.5	42,473 37.0	467 .4	182 .2	199 .2	5,373 4.7	114,658
SAN LUIS OBISPO----- PERCENTAGES-----	26,599 50.9	22,450 42.9	150 .3	285 .5	21	2,771 5.3	52,276
SAN MATEO----- PERCENTAGES-----	143,538 54.8	101,755 38.8	620 .2	869 .3	62	15,190 5.8	262,034
SANTA BARBARA----- PERCENTAGES-----	62,506 50.2	51,598 41.4	286 .2	653 .5	260 .2	9,328 7.5	124,631
SANTA CLARA----- PERCENTAGES-----	255,655 54.5	178,230 38.0	1,144 .2	2,036 .4	1,909 .4	30,432 6.5	469,406
SANTA CRUZ----- PERCENTAGES-----	37,955 52.8	28,142 39.2	234 .3	854 1.2	65 .1	4,627 6.4	71,877

REPORT OF REGISTRATION—BY COUNTIES

COUNTIES	Democratic	Republican	American Independent	Peace and Freedom	Miscellaneous	Declined to State	Total
SHASTA----- PERCENTAGES-----	22,474 61.5	12,730 34.8	53 .1	53 .1	7	1,251 3.4	36,568
SIERRA----- PERCENTAGES-----	821 59.9	485 35.4	0	1 .1	0	63 4.6	1,370
SISKIYOU----- PERCENTAGES-----	9,299 60.7	5,385 35.1	28 .2	42 .3	3	572 3.7	15,329
SOLANO----- PERCENTAGES-----	39,822 65.6	18,389 30.3	255 .4	200 .3	9	1,998 3.3	60,673
SONOMA----- PERCENTAGES-----	57,863 53.5	43,067 39.8	479 .4	1,282 1.2	53	5,329 4.9	108,073
STANISLAUS----- PERCENTAGES-----	47,270 59.7	29,035 36.7	191 .2	105 .1	141 .2	2,422 3.1	79,164
SUTTER----- PERCENTAGES-----	8,473 50.5	7,601 45.3	28 .2	23 .1	21 .1	634 3.8	16,780
TEHAMA----- PERCENTAGES-----	7,273 57.3	4,849 38.2	74 .6	39 .3	1	456 3.6	12,692
TRINITY----- PERCENTAGES-----	2,307 60.3	1,331 34.8	33 .9	11 .3	0	144 3.8	3,826
TULARE----- PERCENTAGES-----	34,410 55.3	25,351 40.8	389 .6	111 .2	41 .1	1,883 3.0	62,185
TUOLUMNE----- PERCENTAGES-----	6,299 56.6	4,444 40.0	41 .4	36 .3	0	301 2.7	11,121

REPORT OF REGISTRATION—BY COUNTIES

COUNTIES	Democratic	Republican	American Independent	Peace and Freedom	Miscellaneous	Declined to State	Total
VENTURA-----	77,582	67,642	647	534	832	7,768	155,005
PERCENTAGES-----	50.1	43.6	.4	.3	.5	5.0	
YOLO-----	27,578	13,835	97	214	238	1,973	43,935
PERCENTAGES-----	62.8	31.5	.2	.5	.5	4.5	
YUBA-----	7,255	4,234	25	27	185	482	12,208
PERCENTAGES-----	59.4	34.7	.2	.2	1.5	3.9	
TOTALS-----	4,751,395	3,300,972	34,456	34,947	20,663	460,912	8,603,345
PERCENTAGES-----	55.2	38.4	.4	.4	.2	5.4	

REPORT OF REGISTRATION—CONGRESSIONAL DISTRICTS

DIST	COUNTIES	Democratic	Republican	American Independent	Peace and Freedom	Miscellaneous	Declined to State	Total
1	DEL NORTE-----	3,201	2,218	16	8	4	304	5,751
	HUMBOLDT-----	27,992	16,023	79	279	16	2,707	47,096
	LAKE-----	6,602	4,959	52	6	1	427	12,047
	MENDOCINO-----	12,746	8,332	92	147	12	1,280	22,609
	NAPA-----	21,539	16,378	179	134	10	1,589	39,829
	SONOMA-----	57,863	43,067	479	1,282	53	5,329	108,073
	TOTALS 1ST DIST-----	129,943	90,977	897	1,856	96	11,636	235,405
	PERCENTAGES-----	55.2	38.6	.4	.8		4.9	
2	ALPINE-----	213	335	0	4	0	42	594
	BUTTE-----	25,884	22,198	245	253	28	2,476	51,084
	EL DORADO-----	11,348	8,601	189	59	3	1,248	21,448
	LASSEN-----	4,800	2,297	29	7	0	339	7,472
	MODOC-----	2,050	1,504	9	0	2	112	3,677
	NEVADA-----	7,667	6,827	39	23	0	634	15,190
	PLACER-----	22,233	13,891	186	138	4	1,473	37,925
	PLUMAS-----	4,094	2,117	35	39	0	273	6,558
	SACRAMENTO-----	8,077	4,820	115	51	4	628	13,695
	SHASTA-----	22,474	12,730	53	53	7	1,251	36,568
	SIERRA-----	821	485	0	1	0	63	1,370
	SISKIYOU-----	9,299	5,385	28	42	3	572	15,329
	TEHAMA-----	7,273	4,849	74	39	1	456	12,692
	TRINITY-----	2,307	1,331	33	11	0	144	3,826
	TOTALS 2ND DIST-----	128,540	87,370	1,035	720	52	9,711	227,428
	PERCENTAGES-----	56.5	38.4	.5	.3		4.3	
3	SACRAMENTO-----	139,305	74,855	817	1,276	192	9,756	226,201
	PERCENTAGES-----	61.6	33.1	.4	.6	.1	4.3	

REPORT OF REGISTRATION—CONGRESSIONAL DISTRICTS—Continued

DIST	COUNTIES	Democratic	Republican	American Independent	Peace and Freedom	Miscellaneous	Declined to State	Total
4	COLUSA-----	2,663	2,017	4	0	0	129	4,813
	GLENN-----	4,398	3,228	64	14	0	238	7,942
	NAPA-----	325	146	5	0	0	12	488
	SACRAMENTO-----	20,849	12,142	181	157	25	1,766	35,120
	SOLANO-----	39,822	18,389	255	200	9	1,998	60,673
	SUTTER-----	8,473	7,601	28	23	21	634	16,780
	YOLO-----	27,578	13,835	97	214	238	1,973	43,935
	YUBA-----	7,255	4,234	25	27	185	482	12,208
	TOTALS 4TH DIST-----	111,363	61,592	659	635	478	7,232	181,959
	PERCENTAGES-----	61.2	33.8	.4	.3	.3	4.0	
5	SAN FRANCISCO-----	122,916	34,290	315	1,501	37	12,457	171,516
	PERCENTAGES-----	71.7	20.0	.2	.9		7.3	
6	MARIN-----	53,599	44,112	126	563	42	8,830	107,272
	SAN FRANCISCO-----	90,875	49,888	173	566	23	8,005	149,530
	TOTALS 6TH DIST-----	144,474	94,000	299	1,129	65	16,835	256,802
	PERCENTAGES-----	56.3	36.6	.1	.4		6.6	
7	ALAMEDA-----	133,145	48,832	269	1,779	493	12,333	196,851
	CONTRA COSTA-----	18,756	17,403	52	127	15	1,682	38,035
	TOTALS 7TH DIST-----	151,901	66,235	321	1,906	508	14,015	234,886
	PERCENTAGES-----	64.7	28.2	.1	.8	.2	6.0	
8	ALAMEDA-----	116,977	59,795	481	507	138	9,712	187,610
	CONTRA COSTA-----	5,230	8,296	19	8	0	763	14,316
	TOTALS 8TH DIST-----	122,207	68,091	500	515	138	10,475	201,926
	PERCENTAGES-----	60.5	33.7	.2	.3	.1	5.2	

REPORT OF REGISTRATION—CONGRESSIONAL DISTRICTS—Continued

DIST	COUNTIES	Democratic	Republican	American Independent	Peace and Freedom	Miscellaneous	Declined to State	Total
9	ALAMEDA-----	61,371	29,874	308	299	194	6,407	98,453
	SANTA CLARA-----	53,514	20,329	222	561	1,017	5,146	80,789
	TOTALS 9TH DIST-----	114,885	50,203	530	860	1,211	11,553	179,242
	PERCENTAGES-----	64.1	28.0	.3	.5	.7	6.4	
10	SANTA CLARA-----	109,539	101,096	537	805	211	13,582	225,770
	PERCENTAGES-----	48.5	44.8	.2	.4	.1	6.0	
11	SAN MATEO-----	122,337	72,726	560	711	49	12,109	208,492
	PERCENTAGES-----	58.7	34.9	.3	.3		5.8	
12	MONTEREY-----	44,678	34,422	387	476	37	4,921	84,921
	SAN BENITO-----	4,038	2,780	41	10	22	189	7,080
	SAN LUIS OBISPO-----	18,417	15,608	99	244	14	2,175	36,557
	SANTA CLARA-----	1,029	459	1	7	11	79	1,586
	SANTA CRUZ-----	37,955	28,142	234	854	65	4,627	71,877
	TOTALS 12TH DIST-----	106,117	81,411	762	1,591	149	11,991	202,021
	PERCENTAGES-----	52.5	40.3	.4	.8	.1	5.9	
13	SANTA BARBARA-----	46,073	41,831	247	407	172	6,388	95,118
	VENTURA-----	57,946	56,308	501	413	369	5,857	121,394
	TOTALS 13TH DIST-----	104,019	98,139	748	820	541	12,245	216,512
	PERCENTAGES-----	48.0	45.3	.3	.4	.2	5.7	
14	CONTRA COSTA-----	125,832	76,635	733	622	93	9,288	213,203
	PERCENTAGES-----	59.0	35.9	.3	.3		4.4	

REPORT OF REGISTRATION—CONGRESSIONAL DISTRICTS—Continued

DIST	COUNTIES	Democratic	Republican	American Independent	Peace and Freedom	Miscellaneous	Declined to State	Total
15	SACRAMENTO-----	13,010	7,771	162	69	8	872	21,892
	SAN JOAQUIN-----	65,964	42,473	467	182	199	5,373	114,658
	STANISLAUS-----	30,495	15,291	127	61	112	1,434	47,520
	TOTALS 15TH DIST----	109,469	65,535	756	312	319	7,679	184,070
	PERCENTAGES-----	59.5	35.6	.4	.2	.2	4.2	
16	FRESNO-----	102,507	53,794	1,115	341	163	5,213	163,133
	MERCED-----	10,922	5,263	74	34	4	702	16,999
	TOTALS 16TH DIST----	113,429	59,057	1,189	375	167	5,915	180,132
	PERCENTAGES-----	63.0	32.8	.7	.2	.1	3.3	
17	SAN MATEO-----	21,201	29,029	60	158	13	3,081	53,542
	SANTA CLARA-----	91,573	56,346	384	663	670	11,625	161,261
	TOTALS 17TH DIST----	112,774	85,375	444	821	683	14,706	214,803
	PERCENTAGES-----	52.5	39.7	.2	.4	.3	6.8	
18	AMADOR-----	4,084	2,496	20	4	4	192	6,800
	CALAVERAS-----	3,819	2,993	44	23	0	227	7,106
	INYO-----	3,693	3,340	32	24	1	291	7,381
	KERN-----	9,018	4,872	154	18	22	327	14,411
	MADERA-----	9,493	5,540	84	6	10	285	15,418
	MARIPOSA-----	1,854	1,642	15	8	1	178	3,698
	MERCED-----	9,733	5,646	65	43	14	662	16,163
	MONO-----	1,266	1,429	19	28	0	156	2,898
	STANISLAUS-----	16,775	13,744	64	44	29	988	31,644
	TULARE-----	34,410	25,351	389	111	41	1,883	62,185
	TUOLUMNE-----	6,299	4,444	41	36	0	301	11,121
	TOTALS 18TH DIST----	100,444	71,497	927	345	122	5,490	178,825
	PERCENTAGES-----	56.2	40.0	.5	.2	.1	3.1	

REPORT OF REGISTRATION—CONGRESSIONAL DISTRICTS—Continued

DIST	COUNTIES	Democratic	Republican	American Independent	Peace and Freedom	Miscellaneous	Declined to State	Total
19	LOS ANGELES----- PERCENTAGES-----	104,457 63.2	50,399 30.5	1,236 .7	481 .3	1,666 1.0	6,988 4.2	165,227
20	LOS ANGELES----- PERCENTAGES-----	92,131 40.7	121,446 53.7	816 .4	748 .3	432 .2	10,745 4.7	226,318
21	LOS ANGELES----- PERCENTAGES-----	104,727 81.2	18,817 14.6	541 .4	292 .2	444 .3	4,212 3.3	129,033
22	LOS ANGELES----- PERCENTAGES-----	115,675 60.2	63,525 33.1	779 .4	1,049 .5	1,581 .8	9,467 4.9	192,076
23	LOS ANGELES----- ORANGE-----	42,293 58,342	32,560 60,462	536 776	193 416	138 94	3,976 7,703	79,696 127,793
	TOTALS 23RD DIST----- PERCENTAGES-----	100,635 48.5	93,022 44.8	1,312 .6	609 .3	232 .1	11,679 5.6	207,489
24	LOS ANGELES----- PERCENTAGES-----	93,442 42.8	112,772 51.6	1,290 .6	579 .3	309 .1	10,059 4.6	218,451
25	LOS ANGELES----- ORANGE-----	81,621 9,369	76,268 11,958	923 107	496 50	351 25	8,553 1,075	168,212 22,584
	TOTALS 25TH DIST----- PERCENTAGES-----	90,990 47.7	88,226 46.2	1,030 .5	546 .3	376 .2	9,628 5.0	190,796

REPORT OF REGISTRATION—CONGRESSIONAL DISTRICTS—Continued

DIST	COUNTIES	Democratic	Republican	American Independent	Peace and Freedom	Miscellaneous	Declined to State	Total
26	LOS ANGELES----- PERCENTAGES-----	164,126 63.4	77,771 30.1	415 .2	1,482 .6	272 .1	14,672 5.7	258,738
27	LOS ANGELES----- VENTURA----- TOTALS 27TH DIST----- PERCENTAGES-----	90,609 19,636 110,245 51.0	80,659 11,334 91,993 42.6	557 146 703 .3	852 121 973 .5	314 463 777 .4	9,526 1,911 11,437 5.3	182,517 33,611 216,128
28	LOS ANGELES----- PERCENTAGES-----	126,025 50.6	103,134 41.4	655 .3	1,850 .7	415 .2	16,834 6.8	248,913
29	LOS ANGELES----- PERCENTAGES-----	97,294 61.8	47,656 30.3	736 .5	876 .6	2,085 1.3	8,786 5.6	157,433
30	LOS ANGELES----- PERCENTAGES-----	76,141 62.1	35,159 28.7	467 .4	540 .4	2,806 2.3	7,399 6.0	122,512
31	LOS ANGELES----- PERCENTAGES-----	108,608 60.9	57,654 32.3	1,214 .7	575 .3	280 .2	9,992 5.6	178,323
32	LOS ANGELES----- ORANGE----- TOTALS 32ND DIST----- PERCENTAGES-----	67,409 43,024 110,433 46.5	58,550 52,797 111,347 46.9	550 338 888 .4	614 311 925 .4	165 45 210 .1	7,198 6,480 13,678 5.8	134,486 102,995 237,481

REPORT OF REGISTRATION—CONGRESSIONAL DISTRICTS—Continued

DIST	COUNTIES	Democratic	Republican	American Independent	Peace and Freedom	Miscellaneous	Declined to State	Total
33	LOS ANGELES-----	21,455	21,254	156	166	90	2,118	45,239
	SAN BERNARDINO-----	69,758	73,409	833	281	117	7,061	151,459
	TOTALS 33RD DIST-----	91,213	94,663	989	447	207	9,179	196,698
	PERCENTAGES-----	46.4	48.1	.5	.2	.1	4.7	
34	LOS ANGELES-----	29,907	16,669	310	179	120	2,536	49,721
	ORANGE-----	70,437	50,827	857	378	202	8,006	130,707
	TOTALS 34TH DIST-----	100,344	67,496	1,167	557	322	10,542	180,428
	PERCENTAGES-----	55.6	37.4	.6	.3	.2	5.8	
35	LOS ANGELES-----	97,067	44,500	1,008	491	443	7,793	151,302
	PERCENTAGES-----	64.2	29.4	.7	.3	.3	5.2	
36	KERN-----	62,350	41,597	1,055	130	61	3,399	108,592
	KINGS-----	12,190	6,584	58	20	4	702	19,558
	SAN LUIS OBISPO-----	8,182	6,842	51	41	7	596	15,719
	SANTA BARBARA-----	16,433	9,767	39	246	88	2,940	29,513
	TOTALS 36TH DIST-----	99,155	64,790	1,203	437	160	7,637	173,382
	PERCENTAGES-----	57.2	37.4	.7	.3	.1	4.4	
37	LOS ANGELES-----	128,415	42,742	379	825	227	7,425	180,013
	PERCENTAGES-----	71.3	23.7	.2	.5	.1	4.1	
38	LOS ANGELES-----	5,438	2,084	49	30	80	368	8,049
	RIVERSIDE-----	25,014	13,267	264	136	19	2,089	40,789
	SAN BERNARDINO-----	62,590	30,145	645	228	292	3,896	97,796
	TOTALS 38TH DIST-----	93,042	45,496	958	394	391	6,353	146,634
	PERCENTAGES-----	63.5	31.0	.7	.3	.3	4.3	

REPORT OF REGISTRATION—CONGRESSIONAL DISTRICTS—Continued

DIST	COUNTIES	Democratic	Republican	American Independent	Peace and Freedom	Miscellaneous	Declined to State	Total
39	ORANGE----- PERCENTAGES-----	86,807 35.6	138,605 56.9	1,342 .6	650 .3	155 .1	15,949 6.5	243,508
40	SAN DIEGO----- PERCENTAGES-----	105,597 44.8	110,288 46.8	710 .3	908 .4	318 .1	17,650 7.5	235,471
41	SAN DIEGO----- PERCENTAGES-----	93,938 58.0	55,286 34.1	761 .5	546 .3	1,024 .6	10,347 6.4	161,902
42	ORANGE----- SAN DIEGO----- TOTALS 42ND DIST----- PERCENTAGES-----	15,522 79,827 95,349 38.9	34,702 96,884 131,586 53.7	134 927 1,061 .4	184 619 803 .3	19 115 134 .1	3,414 12,764 16,178 6.6	53,975 191,136 245,111
43	IMPERIAL----- RIVERSIDE----- SAN DIEGO----- TOTALS 43RD DIST----- PERCENTAGES-----	12,952 74,393 8,700 96,045 47.8	9,343 71,325 12,847 93,515 46.6	40 509 218 767 .4	69 419 76 564 .3	45 225 16 286 .1	1,212 7,129 1,267 9,608 4.8	23,661 154,000 23,124 200,785
	TOTALS, ALL DIST----- PERCENTAGES-----	4,751,395 55.2	3,300,972 38.4	34,456 .4	34,947 .4	20,663 .2	460,912 5.4	8,603,345

REPORT OF REGISTRATION—SENATORIAL DISTRICTS

DIST	COUNTIES	Democratic	Republican	American Independent	Peace and Freedom	Miscellaneous	Declined to State	Total
1	DEL NORTE-----	3,201	2,218	16	8	4	304	5,751
	HUMBOLDT-----	27,992	16,023	79	279	16	2,707	47,096
	LAKE-----	6,602	4,959	52	6	1	427	12,047
	MENDOCINO-----	12,746	8,332	92	147	12	1,280	22,609
	SISKIYOU-----	9,299	5,385	28	42	3	572	15,329
	SONOMA-----	57,863	43,067	479	1,282	53	5,329	108,073
	TRINITY-----	2,307	1,331	33	11	0	144	3,826
	TOTALS 1ST DIST-----	120,010	81,315	779	1,775	89	10,763	214,731
	PERCENTAGES-----	55.9	37.9	.4	.8		5.0	
2	BUTTE-----	25,884	22,198	245	253	28	2,476	51,084
	COLUSA-----	2,663	2,017	4	0	0	129	4,813
	GLENN-----	4,398	3,228	64	14	0	238	7,942
	SHASTA-----	22,474	12,730	53	53	7	1,251	36,568
	SOLANO-----	1,617	1,117	4	7	5	110	2,860
	SUTTER-----	8,473	7,601	28	23	21	634	16,780
	TEHAMA-----	7,273	4,849	74	39	1	456	12,692
	YOLO-----	27,578	13,835	97	214	238	1,973	43,935
	YUBA-----	7,255	4,234	25	27	185	482	12,208
	TOTALS 2ND DIST-----	107,615	71,809	594	630	485	7,749	188,882
	PERCENTAGES-----	57.0	38.0	.3	.3	.3	4.1	
3	ALPINE-----	213	335	0	4	0	42	594
	AMADOR-----	4,084	2,496	20	4	4	192	6,800
	CALAVERAS-----	3,819	2,993	44	23	0	227	7,106
	EL DORADO-----	11,348	8,601	189	59	3	1,248	21,448
	LASSEN-----	4,800	2,297	29	7	0	339	7,472
	MODOC-----	2,050	1,504	9	0	2	112	3,677
	NEVADA-----	7,667	6,827	39	23	0	634	15,190
	PLACER-----	22,233	13,891	186	138	4	1,473	37,925
	PLUMAS-----	4,094	2,117	35	39	0	273	6,558

REPORT OF REGISTRATION—SENATORIAL DISTRICTS—Continued

DIST	COUNTIES	Democratic	Republican	American Independent	Peace and Freedom	Miscellaneous	Declined to State	Total
	SIERRA-----	821	485	0	1	0	63	1,370
	STANISLAUS-----	47,270	29,035	191	105	141	2,422	79,164
	TUOLUMNE-----	6,299	4,444	41	36	0	301	11,121
	TOTALS 3RD DIST-----	114,698	75,025	783	439	154	7,326	198,425
	PERCENTAGES-----	57.8	37.8	.4	.2	.1	3.7	
4	MARIN-----	53,599	44,112	126	563	42	8,830	107,272
	NAPA-----	21,864	16,524	184	134	10	1,601	40,317
	SOLANO-----	38,205	17,272	251	193	4	1,888	57,813
	TOTALS 4TH DIST-----	113,668	77,908	561	890	56	12,319	205,402
	PERCENTAGES-----	55.3	37.9	.3	.4		6.0	
5	SACRAMENTO-----	131,075	64,476	824	1,184	201	8,716	206,476
	PERCENTAGES-----	63.5	31.2	.4	.6	.1	4.2	
6	SACRAMENTO-----	50,166	35,112	451	369	28	4,306	90,432
	SAN JOAQUIN-----	65,964	42,473	467	182	199	5,373	114,658
	TOTALS 6TH DIST-----	116,130	77,585	918	551	227	9,679	205,090
	PERCENTAGES-----	56.6	37.8	.4	.3	.1	4.7	
7	CONTRA COSTA-----	149,818	102,334	804	757	108	11,733	265,554
	PERCENTAGES-----	56.4	38.5	.3	.3		4.4	
8	AND 11 ALAMEDA-----	274,028	110,896	879	2,434	783	24,694	413,714
	PERCENTAGES-----	66.2	26.8	.2	.6	.2	6.0	

REPORT OF REGISTRATION—SENATORIAL DISTRICTS—Continued

DIST	COUNTIES	Democratic	Republican	American Independent	Peace and Freedom	Miscellaneous	Declined to State	Total
9 AND 10	SAN FRANCISCO-- PERCENTAGES-----	213,791 66.6	84,178 26.2	488 .2	2,067 .6	60	20,462 6.4	321,046
12	SAN MATEO----- PERCENTAGES-----	143,538 54.8	101,755 38.8	620 .2	869 .3	62	15,190 5.8	262,034
13	SANTA CLARA----- PERCENTAGES-----	143,097 59.3	78,671 32.6	669 .3	1,117 .5	1,638 .7	16,085 6.7	241,277
14	ALAMEDA----- SANTA CLARA-----	37,465 112,558	27,605 99,559	179 475	151 919	42 271	3,758 14,347	69,200 228,129
	TOTALS 14TH DIST----- PERCENTAGES-----	150,023 50.5	127,164 42.8	654 .2	1,070 .4	313 .1	18,105 6.1	297,329
15	FRESNO----- INYO----- MADERA----- MARIPOSA----- MERCED----- MONO----- TULARE-----	4,240 3,693 9,493 1,854 20,655 1,266 34,410	2,567 3,340 5,540 1,642 10,909 1,429 25,351	31 32 84 15 139 19 389	6 24 6 8 77 28 111	11 1 10 1 18 0 41	178 291 285 178 1,364 156 1,883	7,033 7,381 15,418 3,698 33,162 2,898 62,185
	TOTALS 15TH DIST----- PERCENTAGES-----	75,611 57.4	50,778 38.5	709 .5	260 .2	82 .1	4,335 3.3	131,775
16	FRESNO----- PERCENTAGES-----	98,267 63.0	51,227 32.8	1,084 .7	335 .2	152 .1	5,035 3.2	156,100

REPORT OF REGISTRATION—SENATORIAL DISTRICTS—Continued

DIST	COUNTIES	Democratic	Republican	American Independent	Peace and Freedom	Miscellaneous	Declined to State	Total
17	MONTEREY-----	44,678	34,422	387	476	37	4,921	84,921
	SAN BENITO-----	4,038	2,780	41	10	22	189	7,080
	SAN LUIS OBISPO-----	26,599	22,450	150	285	21	2,771	52,276
	SANTA CRUZ-----	37,955	28,142	234	854	65	4,627	71,877
	TOTALS 17TH DIST-----	113,270	87,794	812	1,625	145	12,508	216,154
	PERCENTAGES-----	52.4	40.6	.4	.8	.1	5.8	
18	KERN-----	71,368	46,469	1,209	148	83	3,726	123,003
	KINGS-----	12,190	6,584	58	20	4	702	19,558
	TOTALS 18TH DIST-----	83,558	53,053	1,267	168	87	4,428	142,561
	PERCENTAGES-----	58.6	37.2	.9	.1	.1	3.1	
19	LOS ANGELES-----	97,614	117,444	975	678	354	11,091	228,156
	PERCENTAGES-----	42.8	51.5	.4	.3	.2	4.9	
20	SAN BERNARDINO-----	112,119	78,763	1,236	420	377	8,714	201,629
	PERCENTAGES-----	55.6	39.1	.6	.2	.2	4.3	
21	LOS ANGELES-----	99,590	128,450	1,220	760	411	11,427	241,858
	PERCENTAGES-----	41.2	53.1	.5	.3	.2	4.7	
22	LOS ANGELES-----	115,663	69,666	835	987	1,579	9,277	198,007
	PERCENTAGES-----	58.4	35.2	.4	.5	.8	4.7	
23	LOS ANGELES-----	161,090	128,539	965	1,705	455	17,192	309,946
	PERCENTAGES-----	52.0	41.5	.3	.6	.1	5.5	

REPORT OF REGISTRATION—SENATORIAL DISTRICTS—Continued

DIST	COUNTIES	Democratic	Republican	American Independent	Peace and Freedom	Miscellaneous	Declined to State	Total
24	SANTA BARBARA-----	62,506	51,598	286	653	260	9,328	124,631
	VENTURA-----	77,582	67,642	647	534	832	7,768	155,005
	TOTALS 24TH DIST-----	140,088	119,240	933	1,187	1,092	17,096	279,636
	PERCENTAGES-----	50.1	42.6	.3	.4	.4	6.1	
25	LOS ANGELES-----	134,213	129,674	807	1,972	457	19,299	286,422
	PERCENTAGES-----	46.9	45.3	.3	.7	.2	6.7	
26	LOS ANGELES-----	145,394	58,194	414	1,320	302	12,345	217,969
	PERCENTAGES-----	66.7	26.7	.2	.6	.1	5.7	
27	LOS ANGELES-----	79,376	38,118	438	927	2,668	8,266	129,793
	PERCENTAGES-----	61.2	29.4	.3	.7	2.1	6.4	
28	LOS ANGELES-----	102,534	51,774	949	514	2,079	8,221	166,071
	PERCENTAGES-----	61.7	31.2	.6	.3	1.3	5.0	
29	LOS ANGELES-----	92,601	14,405	141	284	275	4,193	111,899
	PERCENTAGES-----	82.8	12.9	.1	.3	.2	3.7	
30	LOS ANGELES-----	104,931	47,895	1,431	389	1,595	6,824	163,065
	PERCENTAGES-----	64.3	29.4	.9	.2	1.0	4.2	
31	LOS ANGELES-----	126,296	40,739	699	466	210	7,138	175,548
	PERCENTAGES-----	71.9	23.2	.4	.3	.1	4.1	
32	LOS ANGELES-----	108,876	45,980	1,052	532	386	8,722	165,548
	PERCENTAGES-----	65.8	27.8	.6	.3	.2	5.3	

REPORT OF REGISTRATION—SENATORIAL DISTRICTS—Continued

DIST	COUNTIES	Democratic	Republican	American Independent	Peace and Freedom	Miscellaneous	Declined to State	Total
33	LOS ANGELES----- PERCENTAGES-----	113,595 64.1	53,101 30.0	1,082 .6	581 .3	388 .2	8,392 4.7	177,139
34	ORANGE----- PERCENTAGES-----	173,046 38.8	239,752 53.7	2,366 .5	1,382 .3	290 .1	29,504 6.6	446,340
35	LOS ANGELES----- ORANGE-----	48,552 110,455	45,703 109,599	458 1,188	324 607	326 250	4,856 13,123	100,219 235,222
	TOTALS 35TH DIST----- PERCENTAGES-----	159,007 47.4	155,302 46.3	1,646 .5	931 .3	576 .2	17,979 5.4	335,441
36	RIVERSIDE----- SAN BERNARDINO-----	99,407 20,229	84,592 24,791	773 242	555 89	244 32	9,218 2,243	194,789 47,626
	TOTALS 36TH DIST----- PERCENTAGES-----	119,636 49.4	109,383 45.1	1,015 .4	644 .3	276 .1	11,461 4.7	242,415
37	LOS ANGELES----- PERCENTAGES-----	116,515 51.9	93,937 41.8	1,151 .5	879 .4	733 .3	11,404 5.1	224,619
38	SAN DIEGO----- PERCENTAGES-----	125,495 43.1	144,431 49.6	1,423 .5	912 .3	253 .1	18,613 6.4	291,127
39	SAN DIEGO----- PERCENTAGES-----	92,564 45.6	92,856 45.7	628 .3	852 .4	315 .2	15,817 7.8	203,032

REPORT OF REGISTRATION—SENATORIAL DISTRICTS—Continued

DIST	COUNTIES	Democratic	Republican	American Independent	Peace and Freedom	Miscellaneous	Declined to State	Total
40	IMPERIAL-----	12,952	9,343	40	69	45	1,212	23,661
	SAN DIEGO-----	70,003	38,018	565	385	905	7,598	117,474
	TOTALS 40TH DIST----	82,955	47,361	605	454	950	8,810	141,135
	PERCENTAGES-----	58.8	33.6	.4	.3	.7	6.2	
	TOTALS, ALL DIST----	4,751,395	3,300,972	34,456	34,947	20,663	460,912	8,603,345
	PERCENTAGES-----	55.2	38.4	.4	.4	.2	5.4	

REPORT OF REGISTRATION—ASSEMBLY DISTRICTS

DIST	COUNTIES	Democratic	Republican	American Independent	Peace and Freedom	Miscellaneous	Declined to State	Total
1	DEL NORTE-----	3,201	2,218	16	8	4	304	5,751
	HUMBOLDT-----	4,673	1,973	33	50	3	449	7,181
	LASSEN-----	4,800	2,297	29	7	0	339	7,472
	MODOC-----	2,050	1,504	9	0	2	112	3,677
	PLUMAS-----	4,094	2,117	35	39	0	273	6,558
	SHASTA-----	22,474	12,730	53	53	7	1,251	36,568
	SIERRA-----	821	485	0	1	0	63	1,370
	SISKIYOU-----	9,299	5,385	28	42	3	572	15,329
	TEHAMA-----	7,273	4,849	74	39	1	456	12,692
	TRINITY-----	2,307	1,331	33	11	0	144	3,826
	TOTALS 1ST DIST-----	60,992	34,889	310	250	20	3,963	100,424
	PERCENTAGES-----	60.7	34.7	.3	.2		3.9	
2	HUMBOLDT-----	23,319	14,050	46	229	13	2,258	39,915
	MENDOCINO-----	12,746	8,332	92	147	12	1,280	22,609
	SONOMA-----	32,647	25,746	227	593	42	2,897	62,152
	TOTALS 2ND DIST-----	68,712	48,128	365	969	67	6,435	124,676
	PERCENTAGES-----	55.1	38.6	.3	.8	.1	5.2	
3	SACRAMENTO-----	75,632	47,919	678	536	54	5,783	130,602
	PERCENTAGES-----	57.9	36.7	.5	.4		4.4	
4	BUTTE-----	25,884	22,198	245	253	28	2,476	51,084
	COLUSA-----	2,663	2,017	4	0	0	129	4,813
	GLENN-----	4,398	3,228	64	14	0	238	7,942
	LAKE-----	6,602	4,959	52	6	1	427	12,047
	SUTTER-----	8,473	7,601	28	23	21	634	16,780
	YOLO-----	20,423	11,453	41	188	183	1,653	33,941
	TOTALS 4TH DIST-----	68,443	51,456	434	484	233	5,557	126,607
	PERCENTAGES-----	54.1	40.6	.3	.4	.2	4.4	

REPORT OF REGISTRATION—ASSEMBLY DISTRICTS—Continued

DIST	COUNTIES	Democratic	Republican	American Independent	Peace and Freedom	Miscellaneous	Declined to State	Total
5	NAPA-----	21,864	16,524	184	134	10	1,601	40,317
	SOLANO-----	39,822	18,389	255	200	9	1,998	60,673
	TOTALS 5TH DIST-----	61,686	34,913	439	334	19	3,599	100,990
	PERCENTAGES-----	61.1	34.6	.4	.3		3.6	
6	ALPINE-----	213	335	0	4	0	42	594
	AMADOR-----	4,084	2,496	20	4	4	192	6,800
	CALAVERAS-----	3,819	2,993	44	23	0	227	7,106
	EL DORADO-----	11,348	8,601	189	59	3	1,248	21,448
	INYO-----	3,693	3,340	32	24	1	291	7,381
	MARIPOSA-----	1,854	1,642	15	8	1	178	3,698
	MONO-----	1,266	1,429	19	28	0	156	2,898
	NEVADA-----	7,667	6,827	39	23	0	634	15,190
	PLACER-----	22,233	13,891	186	138	4	1,473	37,925
	TUOLUMNE-----	6,299	4,444	41	36	0	301	11,121
YUBA-----	7,255	4,234	25	27	185	482	12,208	
	TOTALS 6TH DIST-----	69,731	50,232	610	374	198	5,224	126,369
	PERCENTAGES-----	55.2	39.8	.5	.3	.2	4.1	
7	MARIN-----	53,599	44,112	126	563	42	8,830	107,272
	SONOMA-----	25,216	17,321	252	689	11	2,432	45,921
	TOTALS 7TH DIST-----	78,815	61,433	378	1,252	53	11,262	153,193
	PERCENTAGES-----	51.4	40.1	.2	.8		7.4	
8	SACRAMENTO-----	55,655	28,421	420	481	71	4,145	89,193
	PERCENTAGES-----	62.4	31.9	.5	.5	.1	4.6	
9	SACRAMENTO-----	49,954	23,248	177	536	104	3,094	77,113
	YOLO-----	7,155	2,382	56	26	55	320	9,994
	TOTALS 9TH DIST-----	57,109	25,630	233	562	159	3,414	87,107
	PERCENTAGES-----	65.6	29.4	.3	.6	.2	3.9	

REPORT OF REGISTRATION—ASSEMBLY DISTRICTS—Continued

DIST	COUNTIES	Democratic	Republican	American Independent	Peace and Freedom	Miscellaneous	Declined to State	Total
10	CONTRA COSTA----- PERCENTAGES-----	83,733 54.2	62,808 40.7	346 .2	361 .2	26	7,127 4.6	154,401
11	CONTRA COSTA----- PERCENTAGES-----	66,085 59.5	39,526 35.6	458 .4	396 .4	82 .1	4,606 4.1	111,153
12	SAN JOAQUIN----- PERCENTAGES-----	53,662 56.4	36,366 38.2	382 .4	169 .2	174 .2	4,456 4.7	95,209
13	ALAMEDA----- PERCENTAGES-----	88,240 60.2	48,349 33.0	455 .3	393 .3	237 .2	9,025 6.2	146,699
14	ALAMEDA----- PERCENTAGES-----	48,514 62.9	23,901 31.0	190 .2	219 .3	62 .1	4,210 5.5	77,096
15	ALAMEDA----- PERCENTAGES-----	59,934 66.6	25,144 27.9	208 .2	323 .4	118 .1	4,273 4.7	90,000
16	ALAMEDA----- PERCENTAGES-----	59,679 60.6	31,054 31.5	108 .1	785 .8	207 .2	6,633 6.7	98,466
17	ALAMEDA----- PERCENTAGES-----	55,126 78.0	10,053 14.2	97 .1	865 1.2	201 .3	4,311 6.1	70,653
18	SAN FRANCISCO----- PERCENTAGES-----	49,130 67.4	17,075 23.4	96 .1	730 1.0	12	5,883 8.1	72,926
19	SAN FRANCISCO----- PERCENTAGES-----	60,242 66.0	26,216 28.7	117 .1	355 .4	9	4,389 4.8	91,328

REPORT OF REGISTRATION—ASSEMBLY DISTRICTS—Continued

DIST	COUNTIES	Democratic	Republican	American Independent	Peace and Freedom	Miscellaneous	Declined to State	Total
20	SAN FRANCISCO----- PERCENTAGES-----	40,330 66.6	15,514 25.6	88 .1	415 .7	17	4,201 6.9	60,565
21	KINGS----- TULARE-----	12,190 32,614	6,584 24,550	58 354	20 111	4 38	702 1,794	19,558 59,461
	TOTALS 21ST DIST----- PERCENTAGES-----	44,804 56.7	31,134 39.4	412 .5	131 .2	42 .1	2,496 3.2	79,019
22	SANTA CLARA----- PERCENTAGES-----	76,110 46.3	76,148 46.3	266 .2	732 .4	114 .1	11,128 6.8	164,498
23	SAN FRANCISCO----- PERCENTAGES-----	64,089 66.6	25,373 26.4	187 .2	567 .6	22	5,989 6.2	96,227
24	SANTA CLARA----- PERCENTAGES-----	81,441 57.1	50,197 35.2	401 .3	526 .4	224 .2	9,769 6.9	142,558
25	SANTA CLARA----- PERCENTAGES-----	98,104 60.4	51,885 32.0	477 .3	778 .5	1,571 1.0	9,535 5.9	162,350
26	SAN MATEO----- PERCENTAGES-----	64,910 47.9	61,750 45.5	277 .2	494 .4	36	8,180 6.0	135,647
27	SAN MATEO----- PERCENTAGES-----	78,628 62.2	40,005 31.7	343 .3	375 .3	26	7,010 5.5	126,387
28	KERN----- PERCENTAGES-----	46,411 56.8	31,593 38.7	844 1.0	90 .1	44 .1	2,698 3.3	81,680

REPORT OF REGISTRATION—ASSEMBLY DISTRICTS—Continued

DIST	COUNTIES	Democratic	Republican	American Independent	Peace and Freedom	Miscellaneous	Declined to State	Total
29	KERN-----	24,957	14,876	365	58	39	1,028	41,323
	SAN LUIS OBISPO-----	19,859	17,475	104	247	14	2,242	39,941
	TULARE-----	1,796	801	35	0	3	89	2,724
	TOTALS 29TH DIST-----	46,612	33,152	504	305	56	3,359	83,988
	PERCENTAGES-----	55.5	39.5	.6	.4	.1	4.0	
30	SAN JOAQUIN-----	12,302	6,107	85	13	25	917	19,449
	STANISLAUS-----	47,270	29,035	191	105	141	2,422	79,164
	TOTALS 30TH DIST-----	59,572	35,142	276	118	166	3,339	98,613
	PERCENTAGES-----	60.4	35.6	.3	.1	.2	3.4	
31	MERCED-----	20,655	10,909	139	77	18	1,364	33,162
	SAN BENITO-----	4,038	2,780	41	10	22	189	7,080
	SANTA CRUZ-----	37,955	28,142	234	854	65	4,627	71,877
	TOTALS 31ST DIST-----	62,648	41,831	414	941	105	6,180	112,119
	PERCENTAGES-----	55.9	37.3	.4	.8	.1	5.5	
32	FRESNO-----	59,222	26,574	635	244	101	2,957	89,733
	PERCENTAGES-----	66.0	29.6	.7	.3	.1	3.3	
33	FRESNO-----	43,285	27,220	480	97	62	2,256	73,400
	MADERA-----	9,493	5,540	84	6	10	285	15,418
	TOTALS 33RD DIST-----	52,778	32,760	564	103	72	2,541	88,818
	PERCENTAGES-----	59.4	36.9	.6	.1	.1	2.9	
34	MONTEREY-----	44,678	34,422	387	476	37	4,921	84,921
	PERCENTAGES-----	52.6	40.5	.5	.6		5.8	

REPORT OF REGISTRATION—ASSEMBLY DISTRICTS—Continued

DIST	COUNTIES	Democratic	Republican	American Independent	Peace and Freedom	Miscellaneous	Declined to State	Total
35	ORANGE-----	37,457	49,691	391	240	120	5,255	93,154
	SAN BERNARDINO-----	21,658	16,899	201	77	141	1,457	40,433
	TOTALS 35TH DIST-----	59,115	66,590	592	317	261	6,712	133,587
	PERCENTAGES-----	44.3	49.8	.4	.2	.2	5.0	
36	SAN LUIS OBISPO-----	6,740	4,975	46	38	7	529	12,335
	SANTA BARBARA-----	62,506	51,598	286	653	260	9,328	124,631
	TOTALS 36TH DIST-----	69,246	56,573	332	691	267	9,857	136,966
	PERCENTAGES-----	50.6	41.3	.2	.5	.2	7.2	
37	VENTURA-----	77,582	67,642	647	534	832	7,768	155,005
	PERCENTAGES-----	50.1	43.6	.4	.3	.5	5.0	
38	LOS ANGELES-----	50,621	23,520	571	239	182	3,648	78,781
	PERCENTAGES-----	64.3	29.9	.7	.3	.2	4.6	
39	LOS ANGELES-----	51,032	44,111	367	523	136	5,706	101,875
	PERCENTAGES-----	50.1	43.3	.4	.5	.1	5.6	
40	LOS ANGELES-----	26,367	11,232	94	179	1,416	2,494	41,782
	PERCENTAGES-----	63.1	26.9	.2	.4	3.4	6.0	
41	LOS ANGELES-----	53,439	33,379	345	399	1,261	4,219	93,042
	PERCENTAGES-----	57.4	35.9	.4	.4	1.4	4.5	
42	LOS ANGELES-----	51,215	26,005	369	534	300	4,095	82,518
	PERCENTAGES-----	62.1	31.5	.4	.6	.4	5.0	

REPORT OF REGISTRATION—ASSEMBLY DISTRICTS—Continued

DIST	COUNTIES	Democratic	Republican	American Independent	Peace and Freedom	Miscellaneous	Declined to State	Total
43	LOS ANGELES----- PERCENTAGES-----	38,721 40.7	50,411 53.0	388 .4	384 .4	169 .2	5,008 5.3	95,081
44	LOS ANGELES----- PERCENTAGES-----	64,705 59.6	37,179 34.3	611 .6	375 .3	153 .1	5,499 5.1	108,522
45	LOS ANGELES----- PERCENTAGES-----	46,718 60.7	24,800 32.2	238 .3	184 .2	1,200 1.6	3,765 4.9	76,905
46	LOS ANGELES----- PERCENTAGES-----	61,091 42.9	70,759 49.7	520 .4	670 .5	216 .2	9,219 6.5	142,475
47	LOS ANGELES----- PERCENTAGES-----	41,097 41.1	53,300 53.3	337 .3	328 .3	183 .2	4,821 4.8	100,066
48	LOS ANGELES----- PERCENTAGES-----	49,186 62.4	22,318 28.3	280 .4	665 .8	1,673 2.1	4,764 6.0	78,886
49	LOS ANGELES----- PERCENTAGES-----	56,686 45.7	60,157 48.5	549 .4	394 .3	171 .1	6,118 4.9	124,075
50	LOS ANGELES----- PERCENTAGES-----	57,449 58.3	34,652 35.2	563 .6	310 .3	883 .9	4,652 4.7	98,509
51	LOS ANGELES----- PERCENTAGES-----	51,082 62.5	25,734 31.5	401 .5	209 .3	973 1.2	3,303 4.0	81,702
52	LOS ANGELES----- PERCENTAGES-----	42,073 60.2	23,573 33.7	887 1.3	174 .2	305 .4	2,902 4.2	69,914

REPORT OF REGISTRATION—ASSEMBLY DISTRICTS—Continued

DIST	COUNTIES	Democratic	Republican	American Independent	Peace and Freedom	Miscellaneous	Declined to State	Total
53	LOS ANGELES----- PERCENTAGES-----	41,811 88.4	3,913 8.3	47 .1	80 .2	107 .2	1,337 2.8	47,295
54	LOS ANGELES----- PERCENTAGES-----	36,400 35.5	60,774 59.2	355 .3	272 .3	181 .2	4,684 4.6	102,666
55	LOS ANGELES----- PERCENTAGES-----	45,259 87.3	4,934 9.5	119 .2	99 .2	168 .3	1,248 2.4	51,827
56	LOS ANGELES----- PERCENTAGES-----	48,054 63.5	22,254 29.4	188 .2	352 .5	145 .2	4,640 6.1	75,633
57	LOS ANGELES----- PERCENTAGES-----	72,993 52.6	56,254 40.6	333 .2	891 .6	139 .1	8,079 5.8	138,689
58	LOS ANGELES----- PERCENTAGES-----	45,391 58.3	27,232 35.0	646 .8	279 .4	231 .3	4,068 5.2	77,847
59	LOS ANGELES----- PERCENTAGES-----	73,970 67.9	27,585 25.3	156 .1	707 .6	145 .1	6,351 5.8	108,914
60	LOS ANGELES----- PERCENTAGES-----	69,501 51.1	55,482 40.8	273 .2	1,144 .8	224 .2	9,404 6.9	136,028
61	LOS ANGELES----- PERCENTAGES-----	67,854 69.1	24,244 24.7	199 .2	621 .6	143 .1	5,114 5.2	98,175
62	LOS ANGELES----- PERCENTAGES-----	53,313 47.3	53,123 47.1	809 .7	303 .3	134 .1	5,066 4.5	112,748

REPORT OF REGISTRATION—ASSEMBLY DISTRICTS—Continued

DIST	COUNTIES	Democratic	Republican	American Independent	Peace and Freedom	Miscellaneous	Declined to State	Total
63	LOS ANGELES----- PERCENTAGES-----	60,584 72.9	18,906 22.8	138 .2	216 .3	68 .1	3,163 3.8	83,075
64	LOS ANGELES----- PERCENTAGES-----	81,518 51.7	66,084 41.9	553 .4	784 .5	297 .2	8,454 5.4	157,690
65	LOS ANGELES----- PERCENTAGES-----	53,955 73.8	15,655 21.4	333 .5	201 .3	111 .2	2,871 3.9	73,126
66	LOS ANGELES----- PERCENTAGES-----	54,298 56.6	35,452 37.0	682 .7	271 .3	514 .5	4,651 4.9	95,868
67	LOS ANGELES----- PERCENTAGES-----	51,882 61.3	26,344 31.1	725 .9	302 .4	137 .2	5,231 6.2	84,621
68	LOS ANGELES----- PERCENTAGES-----	48,575 62.3	24,253 31.1	541 .7	229 .3	253 .3	4,073 5.2	77,924
69	ORANGE----- PERCENTAGES-----	75,004 51.6	60,513 41.7	876 .6	404 .3	122 .1	8,300 5.7	145,219
70	ORANGE----- PERCENTAGES-----	92,388 44.8	98,203 47.6	1,056 .5	710 .3	191 .1	13,780 6.7	206,328
71	ORANGE----- PERCENTAGES-----	78,652 33.2	140,944 59.5	1,231 .5	635 .3	107	15,292 6.5	236,861
72	SAN BERNARDINO----- PERCENTAGES-----	57,282 61.3	31,155 33.3	587 .6	221 .2	180 .2	4,006 4.3	93,431

REPORT OF REGISTRATION—ASSEMBLY DISTRICTS—Continued

DIST	COUNTIES	Democratic	Republican	American Independent	Peace and Freedom	Miscellaneous	Declined to State	Total
73	SAN BERNARDINO----- PERCENTAGES-----	53,408 46.3	55,500 48.1	690 .6	211 .2	88 .1	5,494 4.8	115,391
74	RIVERSIDE----- PERCENTAGES-----	70,567 52.1	57,595 42.5	598 .4	388 .3	50	6,286 4.6	135,484
75	IMPERIAL----- RIVERSIDE-----	12,952 28,840	9,343 26,997	40 175	69 167	45 194	1,212 2,932	23,661 59,305
	TOTALS 75TH DIST----- PERCENTAGES-----	41,792 50.4	36,340 43.8	215 .3	236 .3	239 .3	4,144 5.0	82,966
76	SAN DIEGO----- PERCENTAGES-----	73,202 47.6	69,097 44.9	679 .4	418 .3	142 .1	10,242 6.7	153,780
77	SAN DIEGO----- PERCENTAGES-----	55,675 54.1	39,192 38.1	550 .5	269 .3	603 .6	6,650 6.5	102,939
78	SAN DIEGO----- PERCENTAGES-----	50,053 45.4	50,394 45.7	319 .3	493 .4	171 .2	8,733 7.9	110,163
79	SAN DIEGO----- PERCENTAGES-----	42,505 62.8	19,993 29.5	260 .4	305 .5	432 .6	4,198 6.2	67,693
80	SAN DIEGO----- PERCENTAGES-----	66,627 37.6	96,629 54.6	808 .5	664 .4	125 .1	12,205 6.9	177,058
	TOTALS, ALL DIST----- PERCENTAGES-----	4,751,395 55.2	3,300,972 38.4	34,456 .4	34,947 .4	20,663 .2	460,912 5.4	8,603,345

REPORT OF REGISTRATION—SUBDIVISIONS BY COUNTY

POLITICAL SUBDIVISION	Democratic	Republican	American Independent	Peace and Freedom	Miscellaneous	Declined to State	Total
ALAMEDA COUNTY							
COUNTY TOTALS-----	311,493	138,501	1,058	2,585	825	28,452	482,914
PERCENTAGES-----	64.5	28.7	.2	.5	.2	5.9	
SUPERVISORIAL DISTRICT 1-	54,195	34,753	315	163	111	5,645	95,182
SUPERVISORIAL DISTRICT 2-	55,763	23,948	259	303	137	5,085	85,495
SUPERVISORIAL DISTRICT 3-	54,845	18,877	153	293	122	4,044	78,334
SUPERVISORIAL DISTRICT 4-	80,418	33,972	186	1,250	270	8,387	124,483
SUPERVISORIAL DISTRICT 5-	66,272	26,951	145	576	185	5,291	99,420
CONGRESSIONAL DISTRICT 7	133,145	48,832	269	1,779	493	12,333	196,851
CONGRESSIONAL DISTRICT 8	116,977	59,795	481	507	138	9,712	187,610
CONGRESSIONAL DISTRICT 9	61,371	29,874	308	299	194	6,407	98,453
SENATORIAL DISTRICT 8/11-	274,028	110,896	879	2,434	783	24,694	413,714
SENATORIAL DISTRICT 14---	37,465	27,605	179	151	42	3,758	69,200
ASSEMBLY DISTRICT 13-----	88,240	48,349	455	393	237	9,025	146,699
ASSEMBLY DISTRICT 14-----	48,514	23,901	190	219	62	4,210	77,096
ASSEMBLY DISTRICT 15-----	59,934	25,144	208	323	118	4,273	90,000
ASSEMBLY DISTRICT 16-----	59,679	31,054	108	785	207	6,633	98,466
ASSEMBLY DISTRICT 17-----	55,126	10,053	97	865	201	4,311	70,653
CITIES							
ALAMEDA-----	14,086	10,306	47	67	21	1,764	26,291
ALBANY-----	5,252	2,193	43	30	26	404	7,948
BERKELEY-----	51,443	11,410	49	1,067	227	5,801	69,997
EMERYVILLE-----	990	285	3	9	2	76	1,365
FREMONT-----	25,128	13,758	138	100	45	2,559	41,728
HAYWARD-----	23,214	9,280	91	156	62	2,340	35,143
LIVERMORE-----	9,852	8,160	63	20	6	925	19,026
NEWARK-----	5,941	2,559	53	16	20	673	9,262

REPORT OF REGISTRATION—SUBDIVISIONS BY COUNTY—Continued

POLITICAL SUBDIVISION	Democratic	Republican	American Independent	Peace and Freedom	Miscellaneous	Declined to State	Total
ALAMEDA COUNTY							
OAKLAND-----	108,187	39,833	229	845	284	7,773	157,151
PIEDMONT-----	2,198	4,581	20	20	3	230	7,052
PLEASANTON-----	5,569	5,799	25	7	3	584	11,987
SAN LEANDRO-----	20,507	10,256	120	64	14	1,581	32,542
UNION CITY-----	5,214	1,737	23	16	76	544	7,610
UNINCORPORATED AREA-----	33,912	18,344	154	168	36	3,198	55,812
ALPINE COUNTY							
COUNTY TOTALS-----	213	335	0	4	0	42	594
PERCENTAGES-----	35.9	56.4		.7		7.1	
SUPERVISORIAL DISTRICT 1-	20	39	0	0	0	3	62
SUPERVISORIAL DISTRICT 2-	101	183	0	1	0	28	313
SUPERVISORIAL DISTRICT 3-	25	40	0	2	0	7	74
SUPERVISORIAL DISTRICT 4-	31	35	0	0	0	2	68
SUPERVISORIAL DISTRICT 5-	36	38	0	1	0	2	77
CONGRESSIONAL DISTRICT 2	213	335	0	4	0	42	594
SENATORIAL DISTRICT 3---	213	335	0	4	0	42	594
ASSEMBLY DISTRICT 6-----	213	335	0	4	0	42	594
CITIES							
UNINCORPORATED AREA-----	213	335	0	4	0	42	594

REPORT OF REGISTRATION—SUBDIVISIONS BY COUNTY—Continued

POLITICAL SUBDIVISION	Democratic	Republican	American Independent	Peace and Freedom	Miscellaneous	Declined to State	Total
AMADOR COUNTY							
COUNTY TOTALS-----	4,084	2,496	20	4	4	192	6,800
PERCENTAGES-----	60.1	36.7	.3	.1	.1	2.8	
SUPERVISORIAL DISTRICT 1-	904	479	9	0	3	39	1,434
SUPERVISORIAL DISTRICT 2-	632	409	0	1	0	26	1,068
SUPERVISORIAL DISTRICT 3-	1,011	677	2	0	0	47	1,737
SUPERVISORIAL DISTRICT 4-	899	603	5	2	0	43	1,552
SUPERVISORIAL DISTRICT 5-	638	328	4	1	1	37	1,009
CONGRESSIONAL DISTRICT 18	4,084	2,496	20	4	4	192	6,800
SENATORIAL DISTRICT 3---	4,084	2,496	20	4	4	192	6,800
ASSEMBLY DISTRICT 6-----	4,084	2,496	20	4	4	192	6,800
CITIES							
AMADOR-----	43	28	1	0	1	0	73
IONE-----	484	299	0	1	0	20	804
JACKSON-----	748	404	8	0	2	35	1,197
PLYMOUTH-----	137	53	0	1	1	7	199
SUTTER CREEK-----	550	378	0	0	0	21	949
UNINCORPORATED AREA-----	2,122	1,334	11	2	0	109	3,578
BUTTE COUNTY							
COUNTY TOTALS-----	25,884	22,198	245	253	28	2,476	51,084
PERCENTAGES-----	50.7	43.5	.5	.5	.1	4.8	

REPORT OF REGISTRATION—SUBDIVISIONS BY COUNTY—Continued

POLITICAL SUBDIVISION	Democratic	Republican	American Independent	Peace and Freedom	Miscellaneous	Declined to State	Total
BUTTE COUNTY - CONTINUED -							
SUPERVISORIAL DISTRICT 1-	4,633	4,263	71	26	3	341	9,337
SUPERVISORIAL DISTRICT 2-	6,277	4,744	39	106	6	892	12,064
SUPERVISORIAL DISTRICT 3-	4,765	4,782	31	58	7	492	10,135
SUPERVISORIAL DISTRICT 4-	5,165	3,589	52	10	1	300	9,117
SUPERVISORIAL DISTRICT 5-	5,044	4,820	52	53	11	451	10,431
CONGRESSIONAL DISTRICT 2	25,884	22,198	245	253	28	2,476	51,084
SENATORIAL DISTRICT 2---	25,884	22,198	245	253	28	2,476	51,084
ASSEMBLY DISTRICT 4-----	25,884	22,198	245	253	28	2,476	51,084
CITIES							
BIGGS-----	279	138	2	1	0	12	432
CHICO-----	5,591	3,859	20	115	3	850	10,438
GRIDLEY-----	693	524	5	0	1	30	1,253
OROVILLE-----	1,737	1,393	7	6	1	120	3,264
UNINCORPORATED AREA-----	17,584	16,284	211	131	23	1,464	35,697
CALAVERAS COUNTY							
COUNTY TOTALS-----	3,819	2,993	44	23	0	227	7,106
PERCENTAGES-----	53.7	42.1	.6	.3		3.2	
SUPERVISORIAL DISTRICT 1-	686	552	4	2	0	35	1,279
SUPERVISORIAL DISTRICT 2-	782	523	8	10	0	38	1,361
SUPERVISORIAL DISTRICT 3-	786	834	10	7	0	56	1,693
SUPERVISORIAL DISTRICT 4-	939	596	13	4	0	64	1,616

REPORT OF REGISTRATION—SUBDIVISIONS BY COUNTY—Continued

POLITICAL SUBDIVISION	Democratic	Republican	American Independent	Peace and Freedom	Miscellaneous	Declined to State	Total
CALAVERAS COUNTY - CONTINUED -							
SUPERVISORIAL DISTRICT 5-	626	488	9	0	0	34	1,157
CONGRESSIONAL DISTRICT 18	3,819	2,993	44	23	0	227	7,106
SENATORIAL DISTRICT 3---	3,819	2,993	44	23	0	227	7,106
ASSEMBLY DISTRICT 6-----	3,819	2,993	44	23	0	227	7,106
CITIES							
ANGELS-----	701	419	7	1	0	38	1,166
UNINCORPORATED AREA-----	3,118	2,574	37	22	0	189	5,940
COLUSA COUNTY							
COUNTY TOTALS-----	2,663	2,017	4	0	0	129	4,813
PERCENTAGES-----	55.3	41.9	.1			2.7	
SUPERVISORIAL DISTRICT 1-	451	467	0	0	0	46	964
SUPERVISORIAL DISTRICT 2-	569	418	0	0	0	16	1,003
SUPERVISORIAL DISTRICT 3-	558	361	1	0	0	21	941
SUPERVISORIAL DISTRICT 4-	477	323	2	0	0	20	822
SUPERVISORIAL DISTRICT 5-	608	448	1	0	0	26	1,083
CONGRESSIONAL DISTRICT 4	2,663	2,017	4	0	0	129	4,813
SENATORIAL DISTRICT 2---	2,663	2,017	4	0	0	129	4,813
ASSEMBLY DISTRICT 4-----	2,663	2,017	4	0	0	129	4,813

REPORT OF REGISTRATION—SUBDIVISIONS BY COUNTY—Continued

POLITICAL SUBDIVISION	Democratic	Republican	American Independent	Peace and Freedom	Miscellaneous	Declined to State	Total
COLUSA COUNTY - CONTINUED -							
CITIES							
COLUSA-----	886	648	1	0	0	32	1,567
WILLIAMS-----	368	228	0	0	0	16	612
UNINCORPORATED AREA-----	1,409	1,141	3	0	0	81	2,634
CONTRA COSTA COUNTY							
COUNTY TOTALS-----	149,818	102,334	804	757	108	11,733	265,554
PERCENTAGES-----	56.4	38.5	.3	.3		4.4	
SUPERVISORIAL DISTRICT 1-	35,760	12,172	166	213	45	1,924	50,280
SUPERVISORIAL DISTRICT 2-	29,238	12,727	293	155	35	1,971	44,419
SUPERVISORIAL DISTRICT 3-	22,732	38,790	73	159	10	3,017	64,781
SUPERVISORIAL DISTRICT 4-	30,461	20,299	176	145	10	2,517	53,608
SUPERVISORIAL DISTRICT 5-	31,627	18,346	96	85	8	2,304	52,466
CONGRESSIONAL DISTRICT 7	18,756	17,403	52	127	15	1,682	38,035
CONGRESSIONAL DISTRICT 8	5,230	8,296	19	8	0	763	14,316
CONGRESSIONAL DISTRICT 14	125,832	76,635	733	622	93	9,288	213,203
SENATORIAL DISTRICT 7---	149,818	102,334	804	757	108	11,733	265,554
ASSEMBLY DISTRICT 10-----	83,733	62,808	346	361	26	7,127	154,401
ASSEMBLY DISTRICT 11-----	66,085	39,526	458	396	82	4,606	111,153
CITIES							
ANTIOCH-----	9,080	2,932	20	19	1	577	12,629

REPORT OF REGISTRATION—SUBDIVISIONS BY COUNTY—Continued

POLITICAL SUBDIVISION	Democratic	Republican	American Independent	Peace and Freedom	Miscellaneous	Declined to State	Total
CONTRA COSTA COUNTY - CONTINUED -							
BRENTWOOD-----	736	312	5	4	0	28	1,085
CLAYTON-----	325	311	0	1	0	27	664
CONCORD-----	22,751	14,850	145	98	8	1,866	39,718
EL CERRITO-----	8,139	4,672	50	51	6	562	13,480
HERCULES-----	57	37	1	1	0	2	98
LAFAYETTE-----	4,057	7,071	22	27	0	529	11,706
MARTINEZ-----	5,395	2,814	21	30	3	413	8,676
PINOLE-----	3,653	1,874	43	19	6	265	5,860
PITTSBURG-----	7,372	1,384	14	25	0	310	9,105
PLEASANT HILL-----	6,549	4,972	19	41	2	559	12,142
RICHMOND-----	23,969	6,059	98	124	35	1,113	31,398
SAN PABLO-----	5,149	1,389	64	31	14	318	6,965
WALNUT CREEK-----	7,971	14,512	18	44	2	1,063	23,610
UNINCORPORATED AREA-----	44,615	39,145	284	242	31	4,101	88,418
DEL NORTE COUNTY							
COUNTY TOTALS-----	3,201	2,218	16	8	4	304	5,751
PERCENTAGES-----	55.7	38.6	.3	.1	.1	5.3	
SUPERVISORIAL DISTRICT 1-	714	433	4	1	0	66	1,218
SUPERVISORIAL DISTRICT 2-	621	473	1	2	0	64	1,161
SUPERVISORIAL DISTRICT 3-	658	541	5	3	2	72	1,281
SUPERVISORIAL DISTRICT 4-	654	433	2	1	2	43	1,135
SUPERVISORIAL DISTRICT 5-	554	338	4	1	0	59	956
CONGRESSIONAL DISTRICT 1	3,201	2,218	16	8	4	304	5,751
SENATORIAL DISTRICT 1---	3,201	2,218	16	8	4	304	5,751

REPORT OF REGISTRATION—SUBDIVISIONS BY COUNTY—Continued

POLITICAL SUBDIVISION	Democratic	Republican	American Independent	Peace and Freedom	Miscellaneous	Declined to State	Total
DEL NORTE COUNTY - CONTINUED -							
ASSEMBLY DISTRICT 1-----	3,201	2,218	16	8	4	304	5,751
CITIES							
CRESCENT CITY-----	586	449	2	2	0	59	1,098
UNINCORPORATED AREA-----	2,615	1,769	14	6	4	245	4,653
EL DORADO COUNTY							
COUNTY TOTALS-----	11,348	8,601	189	59	3	1,248	21,448
PERCENTAGES-----	52.9	40.1	.9	.3		5.8	
SUPERVISORIAL DISTRICT 1-	2,361	1,835	31	4	0	147	4,378
SUPERVISORIAL DISTRICT 2-	1,748	1,361	26	19	0	318	3,472
SUPERVISORIAL DISTRICT 3-	2,868	2,187	52	10	1	250	5,368
SUPERVISORIAL DISTRICT 4-	2,575	1,877	45	9	0	195	4,701
SUPERVISORIAL DISTRICT 5-	1,796	1,341	35	17	2	338	3,529
CONGRESSIONAL DISTRICT 2	11,348	8,601	189	59	3	1,248	21,448
SENATORIAL DISTRICT 3---	11,348	8,601	189	59	3	1,248	21,448
ASSEMBLY DISTRICT 6-----	11,348	8,601	189	59	3	1,248	21,448
CITIES							
PLACERVILLE-----	1,539	1,154	15	2	0	90	2,800
SOUTH LAKE TAHOE-----	2,523	1,917	35	32	2	507	5,016
UNINCORPORATED AREA-----	7,286	5,530	139	25	1	651	13,632

REPORT OF REGISTRATION—SUBDIVISIONS BY COUNTY—Continued

POLITICAL SUBDIVISION	Democratic	Republican	American Independent	Peace and Freedom	Miscellaneous	Declined to State	Total
FRESNO COUNTY							
COUNTY TOTALS-----	102,507	53,794	1,115	341	163	5,213	163,133
PERCENTAGES-----	62.8	33.0	.7	.2	.1	3.2	
SUPERVISORIAL DISTRICT 1-	15,202	4,014	147	41	25	525	19,954
SUPERVISORIAL DISTRICT 2-	24,541	18,388	249	76	18	1,570	44,842
SUPERVISORIAL DISTRICT 3-	24,947	11,320	238	123	57	1,245	37,930
SUPERVISORIAL DISTRICT 4-	14,774	8,019	153	24	26	626	23,622
SUPERVISORIAL DISTRICT 5-	23,043	12,053	328	77	37	1,247	36,785
CONGRESSIONAL DISTRICT 16	102,507	53,794	1,115	341	163	5,213	163,133
SENATORIAL DISTRICT 15---	4,240	2,567	31	6	11	178	7,033
SENATORIAL DISTRICT 16---	98,267	51,227	1,084	335	152	5,035	156,100
ASSEMBLY DISTRICT 32-----	59,222	26,574	635	244	101	2,957	89,733
ASSEMBLY DISTRICT 33-----	43,285	27,220	480	97	62	2,256	73,400
CITIES							
CLOVIS-----	3,864	2,151	66	12	5	278	6,376
COALINGA-----	1,530	803	12	1	0	65	2,411
FIREBAUGH-----	580	133	1	0	0	24	738
FOWLER-----	516	226	6	2	3	30	783
FRESNO-----	46,750	22,234	432	181	73	2,390	72,060
HURON-----	242	37	3	0	1	3	286
KERMAN-----	546	215	17	1	0	19	798
KINGSBURG-----	844	803	4	1	0	72	1,724
MENDOTA-----	445	90	0	0	0	19	554
ORANGE COVE-----	545	132	7	0	1	19	704
PARLIER-----	419	50	2	0	7	11	489
REEDLEY-----	1,784	1,454	13	3	3	69	3,326
SANGER-----	2,580	775	6	5	5	93	3,464

REPORT OF REGISTRATION—SUBDIVISIONS BY COUNTY—Continued

POLITICAL SUBDIVISION	Democratic	Republican	American Independent	Peace and Freedom	Miscellaneous	Declined to State	Total
FRESNO COUNTY - CONTINUED -							
SAN JOAQUIN-----	202	59	1	0	1	11	274
SELMA-----	1,669	890	17	4	1	55	2,636
UNINCORPORATED AREA-----	39,991	23,742	528	131	63	2,055	66,510
GLENN COUNTY							
COUNTY TOTALS-----	4,398	3,228	64	14	0	238	7,942
PERCENTAGES-----	55.4	40.6	.8	.2		3.0	
SUPERVISORIAL DISTRICT 1-	866	674	21	1	0	51	1,613
SUPERVISORIAL DISTRICT 2-	971	717	11	8	0	73	1,780
SUPERVISORIAL DISTRICT 3-	890	606	3	1	0	37	1,537
SUPERVISORIAL DISTRICT 4-	901	561	3	0	0	34	1,499
SUPERVISORIAL DISTRICT 5-	770	670	26	4	0	43	1,513
CONGRESSIONAL DISTRICT 4	4,398	3,228	64	14	0	238	7,942
SENATORIAL DISTRICT 2---	4,398	3,228	64	14	0	238	7,942
ASSEMBLY DISTRICT 4-----	4,398	3,228	64	14	0	238	7,942
CITIES							
ORLAND-----	754	591	7	5	0	50	1,407
WILLOWS-----	1,159	762	4	1	0	40	1,966
UNINCORPORATED AREA-----	2,485	1,875	53	8	0	148	4,569

REPORT OF REGISTRATION—SUBDIVISIONS BY COUNTY—Continued

POLITICAL SUBDIVISION	Democratic	Republican	American Independent	Peace and Freedom	Miscellaneous	Declined to State	Total
HUMBOLDT COUNTY							
COUNTY TOTALS-----	27,992	16,023	79	279	16	2,707	47,096
PERCENTAGES-----	59.4	34.0	.2	.6		5.7	
SUPERVISORIAL DISTRICT 1-	4,759	3,392	8	23	0	325	8,507
SUPERVISORIAL DISTRICT 2-	5,544	3,592	10	47	2	556	9,751
SUPERVISORIAL DISTRICT 3-	6,295	3,112	12	102	4	746	10,271
SUPERVISORIAL DISTRICT 4-	5,112	3,181	11	37	6	440	8,787
SUPERVISORIAL DISTRICT 5-	6,282	2,746	38	70	4	640	9,780
CONGRESSIONAL DISTRICT 1	27,992	16,023	79	279	16	2,707	47,096
SENATORIAL DISTRICT 1---	27,992	16,023	79	279	16	2,707	47,096
ASSEMBLY DISTRICT 1----	4,673	1,973	33	50	3	449	7,181
ASSEMBLY DISTRICT 2----	23,319	14,050	46	229	13	2,258	39,915
CITIES							
ARCATA-----	3,825	1,545	5	57	3	524	5,959
BLUE LAKE-----	373	123	4	3	0	43	546
EUREKA-----	7,084	4,459	16	41	3	551	12,154
FERNDALE-----	344	371	0	5	0	22	742
FORTUNA-----	1,082	884	1	6	0	80	2,053
RIO DELL-----	664	290	2	7	0	43	1,006
TRINIDAD-----	147	80	0	2	0	25	254
UNINCORPORATED AREA-----	14,473	8,271	51	158	10	1,419	24,382
IMPERIAL COUNTY							
COUNTY TOTALS-----	12,952	9,343	40	69	45	1,212	23,661
PERCENTAGES-----	54.7	39.5	.2	.3	.2	5.1	

REPORT OF REGISTRATION—SUBDIVISIONS BY COUNTY—Continued

POLITICAL SUBDIVISION	Democratic	Republican	American Independent	Peace and Freedom	Miscellaneous	Declined to State	Total
IMPERIAL COUNTY - CONTINUED -							
SUPERVISORIAL DISTRICT 1-	1,971	965	5	7	19	223	3,190
SUPERVISORIAL DISTRICT 2-	2,506	3,035	17	22	2	321	5,903
SUPERVISORIAL DISTRICT 3-	2,663	1,874	4	25	1	278	4,845
SUPERVISORIAL DISTRICT 4-	2,754	2,243	9	5	7	206	5,224
SUPERVISORIAL DISTRICT 5-	3,058	1,226	5	10	16	184	4,499
CONGRESSIONAL DISTRICT 43	12,952	9,343	40	69	45	1,212	23,661
SENATORIAL DISTRICT 40---	12,952	9,343	40	69	45	1,212	23,661
ASSEMBLY DISTRICT 75-----	12,952	9,343	40	69	45	1,212	23,661
CITIES							
BRAWLEY-----	2,748	1,688	7	6	15	158	4,622
CALEXICO-----	1,327	575	3	6	18	150	2,079
CALIPATRIA-----	374	164	0	0	2	23	563
EL CENTRO-----	3,631	3,258	16	34	7	427	7,373
HOLTVILLE-----	726	462	4	5	2	40	1,239
IMPERIAL-----	630	425	0	3	0	55	1,113
WESTMORLAND-----	241	98	0	2	0	8	349
UNINCORPORATED AREA-----	3,275	2,673	10	13	1	351	6,323
INYO COUNTY							
COUNTY TOTALS-----	3,693	3,340	32	24	1	291	7,381
PERCENTAGES-----	50.0	45.3	.4	.3		3.9	
SUPERVISORIAL DISTRICT 1-	774	750	8	5	0	60	1,597

REPORT OF REGISTRATION—SUBDIVISIONS BY COUNTY—Continued

POLITICAL SUBDIVISION	Democratic	Republican	American Independent	Peace and Freedom	Miscellaneous	Declined to State	Total
INYO COUNTY							
- CONTINUED -							
SUPERVISORIAL DISTRICT 2-	730	724	12	1	1	88	1,556
SUPERVISORIAL DISTRICT 3-	671	751	3	4	0	37	1,466
SUPERVISORIAL DISTRICT 4-	920	743	3	4	0	66	1,736
SUPERVISORIAL DISTRICT 5-	598	372	6	10	0	40	1,026
CONGRESSIONAL DISTRICT 18	3,693	3,340	32	24	1	291	7,381
SENATORIAL DISTRICT 15---	3,693	3,340	32	24	1	291	7,381
ASSEMBLY DISTRICT 6-----	3,693	3,340	32	24	1	291	7,381
CITIES							
BISHOP-----	777	816	13	2	1	91	1,700
UNINCORPORATED AREA-----	2,916	2,524	19	22	0	200	5,681
KERN COUNTY							
COUNTY TOTALS-----	71,368	46,469	1,209	148	83	3,726	123,003
PERCENTAGES-----	58.0	37.8	1.0	.1	.1	3.0	
SUPERVISORIAL DISTRICT 1-	13,620	9,713	170	27	25	776	24,331
SUPERVISORIAL DISTRICT 2-	11,466	5,089	299	21	15	577	17,467
SUPERVISORIAL DISTRICT 3-	15,741	12,334	299	35	11	934	29,354
SUPERVISORIAL DISTRICT 4-	14,168	11,460	231	25	7	729	26,620
SUPERVISORIAL DISTRICT 5-	16,373	7,873	210	40	25	710	25,231
CONGRESSIONAL DISTRICT 18	9,018	4,872	154	18	22	327	14,411
CONGRESSIONAL DISTRICT 36	62,350	41,597	1,055	130	61	3,399	108,592

REPORT OF REGISTRATION—SUBDIVISIONS BY COUNTY—Continued

POLITICAL SUBDIVISION	Democratic	Republican	American Independent	Peace and Freedom	Miscellaneous	Declined to State	Total
KERN COUNTY - CONTINUED -							
SENATORIAL DISTRICT 18---	71,368	46,469	1,209	148	83	3,726	123,003
ASSEMBLY DISTRICT 28-----	46,411	31,593	844	90	44	2,698	81,680
ASSEMBLY DISTRICT 29-----	24,957	14,876	365	58	39	1,028	41,323
CITIES							
ARVIN-----	963	294	20	0	1	19	1,297
BAKERSFIELD-----	18,111	13,147	221	47	14	983	32,523
CALIFORNIA CITY-----	412	357	7	1	1	76	854
DELANO-----	3,101	1,434	13	7	17	76	4,648
MARICOPA-----	174	58	3	1	0	4	240
MCFARLAND-----	616	229	8	0	3	18	874
RIDGECREST-----	2,040	1,623	27	10	0	180	3,880
SHAFTER-----	1,016	893	14	0	0	58	1,981
TAFT-----	1,118	808	19	4	0	53	2,002
TEHACHAPI-----	1,026	586	7	2	0	47	1,668
WASCO-----	1,623	735	18	2	0	41	2,419
UNINCORPORATED AREA-----	41,168	26,305	852	74	47	2,171	70,617
KINGS COUNTY							
COUNTY TOTALS-----	12,190	6,584	58	20	4	702	19,558
PERCENTAGES-----	62.3	33.7	.3	.1		3.6	
SUPERVISORIAL DISTRICT 1-	2,158	1,212	4	2	1	206	3,583
SUPERVISORIAL DISTRICT 2-	2,319	975	16	3	0	101	3,414
SUPERVISORIAL DISTRICT 3-	2,482	1,958	8	2	0	138	4,588
SUPERVISORIAL DISTRICT 4-	2,571	1,087	22	10	1	148	3,839

REPORT OF REGISTRATION—SUBDIVISIONS BY COUNTY—Continued

POLITICAL SUBDIVISION	Democratic	Republican	American Independent	Peace and Freedom	Miscellaneous	Declined to State	Total
KINGS COUNTY - CONTINUED -							
SUPERVISORIAL DISTRICT 5-	2,660	1,352	8	3	2	109	4,134
CONGRESSIONAL DISTRICT 36	12,190	6,584	58	20	4	702	19,558
SENATORIAL DISTRICT 18---	12,190	6,584	58	20	4	702	19,558
ASSEMBLY DISTRICT 21-----	12,190	6,584	58	20	4	702	19,558
CITIES							
CORCORAN-----	1,059	549	6	1	0	44	1,659
HANFORD-----	3,569	2,055	11	4	2	183	5,824
LEMOORE-----	966	594	0	1	1	94	1,656
UNINCORPORATED AREA-----	6,596	3,386	41	14	1	381	10,419
LAKE COUNTY							
COUNTY TOTALS-----	6,602	4,959	52	6	1	427	12,047
PERCENTAGES-----	54.8	41.2	.4			3.5	
SUPERVISORIAL DISTRICT 1-	1,532	1,046	10	1	0	101	2,690
SUPERVISORIAL DISTRICT 2-	1,416	850	4	0	0	65	2,335
SUPERVISORIAL DISTRICT 3-	1,369	925	9	0	0	82	2,385
SUPERVISORIAL DISTRICT 4-	1,136	1,112	28	4	1	82	2,363
SUPERVISORIAL DISTRICT 5-	1,149	1,026	1	1	0	97	2,274
CONGRESSIONAL DISTRICT 1	6,602	4,959	52	6	1	427	12,047
SENATORIAL DISTRICT 1---	6,602	4,959	52	6	1	427	12,047

REPORT OF REGISTRATION—SUBDIVISIONS BY COUNTY—Continued

POLITICAL SUBDIVISION	Democratic	Republican	American Independent	Peace and Freedom	Miscellaneous	Declined to State	Total
LAKE COUNTY - CONTINUED -							
ASSEMBLY DISTRICT 4-----	6,602	4,959	52	6	1	427	12,047
CITIES							
LAKEPORT-----	752	727	8	0	1	51	1,539
UNINCORPORATED AREA-----	5,850	4,232	44	6	0	376	10,508
LASSEN COUNTY							
COUNTY TOTALS-----	4,800	2,297	29	7	0	339	7,472
PERCENTAGES-----	64.2	30.7	.4	.1		4.5	
SUPERVISORIAL DISTRICT 1-	934	488	9	5	0	103	1,539
SUPERVISORIAL DISTRICT 2-	1,033	425	6	2	0	49	1,515
SUPERVISORIAL DISTRICT 3-	908	382	4	0	0	45	1,339
SUPERVISORIAL DISTRICT 4-	892	542	7	0	0	59	1,500
SUPERVISORIAL DISTRICT 5-	1,033	460	3	0	0	83	1,579
CONGRESSIONAL DISTRICT 2	4,800	2,297	29	7	0	339	7,472
SENATORIAL DISTRICT 3---	4,800	2,297	29	7	0	339	7,472
ASSEMBLY DISTRICT 1-----	4,800	2,297	29	7	0	339	7,472
CITIES							
SUSANVILLE-----	2,148	964	15	3	0	112	3,242
UNINCORPORATED AREA-----	2,652	1,333	14	4	0	227	4,230

REPORT OF REGISTRATION—SUBDIVISIONS BY COUNTY—Continued

POLITICAL SUBDIVISION	Democratic	Republican	American Independent	Peace and Freedom	Miscellaneous	Declined to State	Total
LOS ANGELES COUNTY							
COUNTY TOTALS-----	1,646,840	1,063,619	12,617	12,318	12,218	148,647	2,896,259
PERCENTAGES-----	56.9	36.7	.4	.4	.4	5.1	
SUPERVISORIAL DISTRICT 1-	291,103	225,616	3,547	1,613	2,334	25,819	550,032
SUPERVISORIAL DISTRICT 2-	366,333	104,205	1,759	1,564	923	21,313	496,097
SUPERVISORIAL DISTRICT 3-	346,902	176,830	1,792	3,273	5,525	32,862	567,184
SUPERVISORIAL DISTRICT 4-	336,830	247,091	2,773	3,466	1,231	37,217	628,608
SUPERVISORIAL DISTRICT 5-	305,672	309,877	2,746	2,402	2,205	31,436	654,338
CONGRESSIONAL DISTRICT 19	104,457	50,399	1,236	481	1,666	6,988	165,227
CONGRESSIONAL DISTRICT 20	92,131	121,446	816	748	432	10,745	226,318
CONGRESSIONAL DISTRICT 21	104,727	18,817	541	292	444	4,212	129,033
CONGRESSIONAL DISTRICT 22	115,675	63,525	779	1,049	1,581	9,467	192,076
CONGRESSIONAL DISTRICT 23	42,293	32,560	536	193	138	3,976	79,696
CONGRESSIONAL DISTRICT 24	93,442	112,772	1,290	579	309	10,059	218,451
CONGRESSIONAL DISTRICT 25	81,621	76,268	923	496	351	8,553	168,212
CONGRESSIONAL DISTRICT 26	164,126	77,771	415	1,482	272	14,672	258,738
CONGRESSIONAL DISTRICT 27	90,609	80,659	557	852	314	9,526	182,517
CONGRESSIONAL DISTRICT 28	126,025	103,134	655	1,850	415	16,834	248,913
CONGRESSIONAL DISTRICT 29	97,294	47,656	736	876	2,085	8,786	157,433
CONGRESSIONAL DISTRICT 30	76,141	35,159	467	540	2,806	7,399	122,512
CONGRESSIONAL DISTRICT 31	108,608	57,654	1,214	575	280	9,992	178,323
CONGRESSIONAL DISTRICT 32	67,409	58,550	550	614	165	7,198	134,486
CONGRESSIONAL DISTRICT 33	21,455	21,254	156	166	90	2,118	45,239
CONGRESSIONAL DISTRICT 34	29,907	16,669	310	179	120	2,536	49,721
CONGRESSIONAL DISTRICT 35	97,067	44,500	1,008	491	443	7,793	151,302
CONGRESSIONAL DISTRICT 37	128,415	42,742	379	825	227	7,425	180,013
CONGRESSIONAL DISTRICT 38	5,438	2,084	49	30	80	368	8,049
SENATORIAL DISTRICT 19---	97,614	117,444	975	678	354	11,091	228,156
SENATORIAL DISTRICT 21---	99,590	128,450	1,220	760	411	11,427	241,858
SENATORIAL DISTRICT 22---	115,663	69,666	835	987	1,579	9,277	198,007

REPORT OF REGISTRATION—SUBDIVISIONS BY COUNTY—Continued

POLITICAL SUBDIVISION	Democratic	Republican	American Independent	Peace and Freedom	Miscellaneous	Declined to State	Total
LOS ANGELES COUNTY - CONTINUED -							
SENATORIAL DISTRICT 23---	161,090	128,539	965	1,705	455	17,192	309,946
SENATORIAL DISTRICT 25---	134,213	129,674	807	1,972	457	19,299	286,422
SENATORIAL DISTRICT 26---	145,394	58,194	414	1,320	302	12,345	217,969
SENATORIAL DISTRICT 27---	79,376	38,118	438	927	2,668	8,266	129,793
SENATORIAL DISTRICT 28---	102,534	51,774	949	514	2,079	8,221	166,071
SENATORIAL DISTRICT 29---	92,601	14,405	141	284	275	4,193	111,899
SENATORIAL DISTRICT 30---	104,931	47,895	1,431	389	1,595	6,824	163,065
SENATORIAL DISTRICT 31---	126,296	40,739	699	466	210	7,138	175,548
SENATORIAL DISTRICT 32---	108,876	45,980	1,052	532	386	8,722	165,548
SENATORIAL DISTRICT 33---	113,595	53,101	1,082	581	388	8,392	177,139
SENATORIAL DISTRICT 35---	48,552	45,703	458	324	326	4,856	100,219
SENATORIAL DISTRICT 37---	116,515	93,937	1,151	879	733	11,404	224,619
ASSEMBLY DISTRICT 38-----	50,621	23,520	571	239	182	3,648	78,781
ASSEMBLY DISTRICT 39-----	51,032	44,111	367	523	136	5,706	101,875
ASSEMBLY DISTRICT 40-----	26,367	11,232	94	179	1,416	2,494	41,782
ASSEMBLY DISTRICT 41-----	53,439	33,379	345	399	1,261	4,219	93,042
ASSEMBLY DISTRICT 42-----	51,215	26,005	369	534	300	4,095	82,518
ASSEMBLY DISTRICT 43-----	38,721	50,411	388	384	169	5,008	95,081
ASSEMBLY DISTRICT 44-----	64,705	37,179	611	375	153	5,499	108,522
ASSEMBLY DISTRICT 45-----	46,718	24,800	238	184	1,200	3,765	76,905
ASSEMBLY DISTRICT 46-----	61,091	70,759	520	670	216	9,219	142,475
ASSEMBLY DISTRICT 47-----	41,097	53,300	337	328	183	4,821	100,066
ASSEMBLY DISTRICT 48-----	49,186	22,318	280	665	1,673	4,764	78,886
ASSEMBLY DISTRICT 49-----	56,686	60,157	549	394	171	6,118	124,075
ASSEMBLY DISTRICT 50-----	57,449	34,652	563	310	883	4,652	98,509
ASSEMBLY DISTRICT 51-----	51,082	25,734	401	209	973	3,303	81,702
ASSEMBLY DISTRICT 52-----	42,073	23,573	887	174	305	2,902	69,914
ASSEMBLY DISTRICT 53-----	41,811	3,913	47	80	107	1,337	47,295
ASSEMBLY DISTRICT 54-----	36,400	60,774	355	272	181	4,684	102,666
ASSEMBLY DISTRICT 55-----	45,259	4,934	119	99	168	1,248	51,827
ASSEMBLY DISTRICT 56-----	48,054	22,254	188	352	145	4,640	75,633
ASSEMBLY DISTRICT 57-----	72,993	56,254	333	891	139	8,079	138,689

REPORT OF REGISTRATION—SUBDIVISIONS BY COUNTY—Continued

POLITICAL SUBDIVISION	Democratic	Republican	American Independent	Peace and Freedom	Miscellaneous	Declined to State	Total
LOS ANGELES COUNTY - CONTINUED -							
ASSEMBLY DISTRICT 58-----	45,391	27,232	646	279	231	4,068	77,847
ASSEMBLY DISTRICT 59-----	73,970	27,585	156	707	145	6,351	108,914
ASSEMBLY DISTRICT 60-----	69,501	55,482	273	1,144	224	9,404	136,028
ASSEMBLY DISTRICT 61-----	67,854	24,244	199	621	143	5,114	98,175
ASSEMBLY DISTRICT 62-----	53,313	53,123	809	303	134	5,066	112,748
ASSEMBLY DISTRICT 63-----	60,584	18,906	138	216	68	3,163	83,075
ASSEMBLY DISTRICT 64-----	81,518	66,084	553	784	297	8,454	157,690
ASSEMBLY DISTRICT 65-----	53,955	15,655	333	201	111	2,871	73,126
ASSEMBLY DISTRICT 66-----	54,298	35,452	682	271	514	4,651	95,868
ASSEMBLY DISTRICT 67-----	51,882	26,344	725	302	137	5,231	84,621
ASSEMBLY DISTRICT 68-----	48,575	24,253	541	229	253	4,073	77,924
CITIES							
ALHAMBRA-----	15,729	13,703	120	76	156	1,489	31,273
ARCADIA-----	7,676	17,553	100	46	13	1,090	26,478
ARTESIA-----	2,369	1,566	26	19	23	203	4,206
AVALON-----	415	528	14	9	0	34	1,000
AZUSA-----	5,114	2,777	73	37	29	453	8,483
BALDWIN PARK-----	8,352	3,312	130	49	67	586	12,496
BELL-----	4,313	2,118	70	19	13	259	6,792
BELLFLOWER-----	12,094	7,212	181	72	26	994	20,579
BELL GARDENS-----	4,349	1,241	218	19	19	257	6,103
BEVERLY HILLS-----	12,554	6,734	8	61	12	1,172	20,541
BRADBURY-----	105	285	1	3	0	22	416
BURBANK-----	20,598	20,419	224	106	39	1,965	43,351
CARSON-----	16,312	4,925	213	65	80	1,207	22,802
CERRITOS-----	7,440	6,356	54	21	28	837	14,736
CLAREMONT-----	5,514	6,369	23	73	29	614	12,622
COMMERCE-----	2,276	265	31	8	75	111	2,766
COMPTON-----	19,422	1,327	26	53	72	639	21,539
COVINA-----	6,658	6,892	68	39	7	867	14,531
CUDAHY-----	2,185	780	32	15	22	189	3,223

REPORT OF REGISTRATION—SUBDIVISIONS BY COUNTY—Continued

POLITICAL SUBDIVISION	Democratic	Republican	American Independent	Peace and Freedom	Miscellaneous	Declined to State	Total
LOS ANGELES COUNTY - CONTINUED -							
CULVER CITY-----	9,888	6,210	62	65	16	980	17,221
DOWNEY-----	20,384	17,422	275	81	61	1,942	40,165
DUARTE-----	2,698	2,134	29	31	9	361	5,262
EL MONTE-----	12,272	6,090	189	66	140	993	19,750
EL SEGUNDO-----	3,208	3,527	27	44	3	366	7,175
GARDENA-----	10,378	4,883	103	48	22	997	16,431
GLENDALE-----	22,962	38,458	276	135	82	2,742	64,655
GLENDORA-----	5,831	8,101	69	31	6	756	14,794
HAWAIIAN GARDENS-----	1,376	411	22	2	78	143	2,032
HAWTHORNE-----	12,393	7,167	234	65	42	1,295	21,196
HERMOSA BEACH-----	5,002	3,711	41	126	28	971	9,879
HIDDEN HILLS-----	282	492	0	1	0	37	812
HUNTINGTON PARK-----	5,765	3,473	166	23	60	386	9,873
INDUSTRY-----	67	61	3	1	0	10	142
INGLEWOOD-----	20,530	12,502	178	105	58	1,805	35,178
IRWINDALE-----	256	44	2	8	10	12	332
LAKESWOOD-----	22,289	12,653	226	125	34	1,798	37,125
LA MIRADA-----	6,709	6,101	72	32	28	595	13,537
LA PUENTE-----	6,583	1,814	55	32	84	460	9,028
LA VERNE-----	3,004	3,436	33	17	11	315	6,816
LAWDALE-----	4,494	1,987	70	23	18	528	7,120
LOMITA-----	4,235	2,699	55	12	22	465	7,488
LONG BEACH-----	85,589	66,339	701	745	220	8,817	162,411
LOS ANGELES-----	713,055	356,513	3,136	6,270	5,371	59,963	1,144,308
LYNWOOD-----	8,812	4,408	146	41	34	638	14,079
MANHATTAN BEACH-----	8,685	9,098	70	106	27	1,385	19,371
MAYWOOD-----	2,908	1,170	48	6	37	160	4,329
MONROVIA-----	5,795	6,144	67	37	15	610	12,668
MONTEBELLO-----	12,671	4,341	48	39	258	728	18,085
MONTEREY PARK-----	12,956	6,391	34	48	215	1,162	20,806
NORWALK-----	18,973	7,348	333	95	271	1,426	28,446
PALMDALE-----	2,173	1,876	29	10	4	204	4,296
PALOS VERDES ESTATES-----	1,897	5,604	17	11	11	428	7,968

REPORT OF REGISTRATION—SUBDIVISIONS BY COUNTY—Continued

POLITICAL SUBDIVISION	Democratic	Republican	American Independent	Peace and Freedom	Miscellaneous	Declined to State	Total
LOS ANGELES COUNTY - CONTINUED -							
PARAMOUNT-----	6,080	2,683	99	38	33	516	9,449
PASADENA-----	22,212	26,493	161	164	120	2,564	51,714
PICO RIVERA-----	14,046	3,424	92	44	442	653	18,701
POMONA-----	17,235	11,745	144	97	126	1,457	30,804
REDONDO BEACH-----	13,155	9,503	168	187	43	1,872	24,928
ROLLING HILLS-----	244	872	2	2	2	55	1,177
ROLLING HILLS ESTATES-----	1,075	2,482	5	7	6	175	3,750
ROSEMEAD-----	8,504	4,002	73	41	141	701	13,462
SAN DIMAS-----	3,069	2,916	35	16	13	338	6,387
SAN FERNANDO-----	3,166	1,720	38	14	368	203	5,509
SAN GABRIEL-----	6,833	6,516	43	26	71	573	14,062
SAN MARINO-----	1,218	7,321	11	9	7	253	8,819
SANTA FE SPRINGS-----	3,640	1,088	23	9	70	245	5,075
SANTA MONICA-----	22,995	19,144	154	476	91	3,502	46,362
SIERRA MADRE-----	2,327	3,717	21	35	12	435	6,547
SIGNAL HILL-----	1,194	830	21	10	2	139	2,196
SOUTH EL MONTE-----	2,842	809	30	11	63	178	3,933
SOUTH GATE-----	13,621	7,432	224	59	31	887	22,254
SOUTH PASADENA-----	4,264	7,835	45	42	33	729	12,948
TEMPLE CITY-----	6,946	7,317	74	29	18	694	15,078
TORRANCE-----	32,359	28,612	383	151	115	4,016	65,636
VERNON-----	40	24	1	0	1	3	69
WALNUT-----	1,089	1,172	8	4	1	120	2,394
WEST COVINA-----	14,958	13,371	158	90	38	1,469	30,084
WHITTIER-----	14,827	20,288	165	93	80	1,448	36,901
UNINCORPORATED AREA-----	221,306	155,333	2,011	1,393	2,306	18,956	401,305
MADERA COUNTY							
COUNTY TOTALS-----	9,493	5,540	84	6	10	285	15,418
PERCENTAGES-----	61.6	35.9	.5		.1	1.8	

REPORT OF REGISTRATION—SUBDIVISIONS BY COUNTY—Continued

POLITICAL SUBDIVISION	Democratic	Republican	American Independent	Peace and Freedom	Miscellaneous	Declined to State	Total
MADERA COUNTY - CONTINUED -							
SUPERVISORIAL DISTRICT 1-	1,625	923	14	1	1	58	2,622
SUPERVISORIAL DISTRICT 2-	1,673	872	10	1	0	32	2,588
SUPERVISORIAL DISTRICT 3-	2,302	1,420	12	0	3	51	3,788
SUPERVISORIAL DISTRICT 4-	1,919	894	23	3	5	51	2,895
SUPERVISORIAL DISTRICT 5-	1,974	1,431	25	1	1	93	3,525
CONGRESSIONAL DISTRICT 18	9,493	5,540	84	6	10	285	15,418
SENATORIAL DISTRICT 15---	9,493	5,540	84	6	10	285	15,418
ASSEMBLY DISTRICT 33-----	9,493	5,540	84	6	10	285	15,418
CITIES							
CHOWCHILLA-----	902	491	8	1	0	17	1,419
MADERA-----	3,915	1,891	31	2	8	87	5,934
UNINCORPORATED AREA-----	4,676	3,158	45	3	2	181	8,065
MARIN COUNTY							
COUNTY TOTALS-----	53,599	44,112	126	563	42	8,830	107,272
PERCENTAGES-----	50.0	41.1	.1	.5		8.2	
SUPERVISORIAL DISTRICT 1-	10,679	10,655	15	59	5	1,377	22,790
SUPERVISORIAL DISTRICT 2-	10,997	9,514	32	125	8	1,613	22,289
SUPERVISORIAL DISTRICT 3-	14,587	10,669	25	203	12	2,672	28,168
SUPERVISORIAL DISTRICT 4-	9,714	6,046	30	136	16	1,849	17,791
SUPERVISORIAL DISTRICT 5-	7,622	7,228	24	40	1	1,319	16,234

REPORT OF REGISTRATION—SUBDIVISIONS BY COUNTY—Continued

POLITICAL SUBDIVISION	Democratic	Republican	American Independent	Peace and Freedom	Miscellaneous	Declined to State	Total
MARIN COUNTY - CONTINUED -							
CONGRESSIONAL DISTRICT 6	53,599	44,112	126	563	42	8,830	107,272
SENATORIAL DISTRICT 4---	53,599	44,112	126	563	42	8,830	107,272
ASSEMBLY DISTRICT 7-----	53,599	44,112	126	563	42	8,830	107,272
CITIES							
BELVEDERE-----	515	1,061	1	5	0	75	1,657
CORTE MADERA-----	2,402	1,955	6	15	1	351	4,730
FAIRFAX-----	2,554	1,114	6	49	1	430	4,154
LARKSPUR-----	2,693	2,781	11	26	3	487	6,001
MILL VALLEY-----	4,109	2,693	9	51	5	668	7,535
NOVATO-----	5,942	5,428	17	25	1	999	12,412
ROSS-----	586	893	1	2	0	89	1,571
SAN ANSELMO-----	4,274	2,579	14	56	6	517	7,446
SAN RAFAEL-----	9,458	8,705	20	61	8	1,319	19,571
SAUSALITO-----	2,368	1,510	1	30	0	583	4,492
TIBURON-----	1,456	1,784	4	9	1	276	3,530
UNINCORPORATED AREA-----	17,242	13,609	36	234	16	3,036	34,173
MARIPOSA COUNTY							
COUNTY TOTALS-----	1,854	1,642	15	8	1	178	3,698
PERCENTAGES-----	50.1	44.4	.4	.2		4.8	
SUPERVISORIAL DISTRICT 1-	414	287	4	1	0	34	740
SUPERVISORIAL DISTRICT 2-	366	235	5	4	1	51	662
SUPERVISORIAL DISTRICT 3-	338	331	1	0	0	35	705

REPORT OF REGISTRATION—SUBDIVISIONS BY COUNTY—Continued

POLITICAL SUBDIVISION	Democratic	Republican	American Independent	Peace and Freedom	Miscellaneous	Declined to State	Total
MARIPOSA COUNTY - CONTINUED -							
SUPERVISORIAL DISTRICT 4-	362	418	1	3	0	23	807
SUPERVISORIAL DISTRICT 5-	374	371	4	0	0	35	784
CONGRESSIONAL DISTRICT 18	1,854	1,642	15	8	1	178	3,698
SENATORIAL DISTRICT 15---	1,854	1,642	15	8	1	178	3,698
ASSEMBLY DISTRICT 6-----	1,854	1,642	15	8	1	178	3,698
CITIES							
UNINCORPORATED AREA-----	1,854	1,642	15	8	1	178	3,698
MENDOCINO COUNTY							
COUNTY TOTALS----->	12,746	8,332	92	147	12	1,280	22,609
PERCENTAGES----->	56.4	36.9	.4	.7	.1	5.7	
SUPERVISORIAL DISTRICT 1-	2,711	1,798	20	12	2	187	4,730
SUPERVISORIAL DISTRICT 2-	2,264	1,860	26	3	1	159	4,313
SUPERVISORIAL DISTRICT 3-	2,352	1,546	25	19	1	203	4,146
SUPERVISORIAL DISTRICT 4-	2,736	1,374	8	29	1	212	4,360
SUPERVISORIAL DISTRICT 5-	2,683	1,754	13	84	7	519	5,060
CONGRESSIONAL DISTRICT 1	12,746	8,332	92	147	12	1,280	22,609
SENATORIAL DISTRICT 1---	12,746	8,332	92	147	12	1,280	22,609
ASSEMBLY DISTRICT 2-----	12,746	8,332	92	147	12	1,280	22,609

REPORT OF REGISTRATION—SUBDIVISIONS BY COUNTY—Continued

POLITICAL SUBDIVISION	Democratic	Republican	American Independent	Peace and Freedom	Miscellaneous	Declined to State	Total
MENDOCINO COUNTY - CONTINUED -							
CITIES							
FORT BRAGG-----	1,252	620	6	10	1	73	1,962
POINT ARENA-----	89	100	1	1	0	11	202
UKIAH-----	2,454	2,003	20	1	2	177	4,657
WILLITS-----	688	427	5	2	0	52	1,174
UNINCORPORATED AREA-----	8,263	5,182	60	133	9	967	14,614
MERCED COUNTY							
COUNTY TOTALS-----	20,655	10,909	139	77	18	1,364	33,162
PERCENTAGES-----	62.3	32.9	.4	.2	.1	4.1	
SUPERVISORIAL DISTRICT 1-	4,688	2,951	39	16	4	324	8,022
SUPERVISORIAL DISTRICT 2-	4,165	2,305	33	22	8	307	6,840
SUPERVISORIAL DISTRICT 3-	3,205	2,066	45	24	0	366	5,706
SUPERVISORIAL DISTRICT 4-	4,149	1,795	9	6	4	171	6,134
SUPERVISORIAL DISTRICT 5-	4,448	1,792	13	9	2	196	6,460
CONGRESSIONAL DISTRICT 16	10,922	5,263	74	34	4	702	16,999
CONGRESSIONAL DISTRICT 18	9,733	5,646	65	43	14	662	16,163
SENATORIAL DISTRICT 15---	20,655	10,909	139	77	18	1,364	33,162
ASSEMBLY DISTRICT 31-----	20,655	10,909	139	77	18	1,364	33,162
CITIES							
ATWATER-----	1,558	1,030	19	10	0	229	2,846

REPORT OF REGISTRATION—SUBDIVISIONS BY COUNTY—Continued

POLITICAL SUBDIVISION	Democratic	Republican	American Independent	Peace and Freedom	Miscellaneous	Declined to State	Total
MERCED COUNTY - CONTINUED -							
DOS PALOS-----	616	333	0	0	0	24	973
GUSTINE-----	960	331	1	0	0	41	1,333
LIVINGSTON-----	561	181	0	2	1	33	778
LOS BANOS-----	2,414	926	7	7	0	124	3,478
MERCED-----	5,277	3,052	32	26	7	403	8,797
UNINCORPORATED AREA-----	9,269	5,056	80	32	10	510	14,957
MODOC COUNTY							
COUNTY TOTALS-----	2,050	1,504	9	0	2	112	3,677
PERCENTAGES-----	55.8	40.9	.2	.1	.1	3.0	
SUPERVISORIAL DISTRICT 1-	250	319	2	0	0	16	587
SUPERVISORIAL DISTRICT 2-	639	326	1	0	0	32	998
SUPERVISORIAL DISTRICT 3-	530	318	0	0	0	36	884
SUPERVISORIAL DISTRICT 4-	393	285	5	0	0	10	693
SUPERVISORIAL DISTRICT 5-	238	256	1	0	2	18	515
CONGRESSIONAL DISTRICT 2	2,050	1,504	9	0	2	112	3,677
SENATORIAL DISTRICT 3---	2,050	1,504	9	0	2	112	3,677
ASSEMBLY DISTRICT 1-----	2,050	1,504	9	0	2	112	3,677
CITIES							
ALTURAS-----	912	429	0	0	0	49	1,390
UNINCORPORATED AREA-----	1,138	1,075	9	0	2	63	2,287

REPORT OF REGISTRATION—SUBDIVISIONS BY COUNTY—Continued

POLITICAL SUBDIVISION	Democratic	Republican	American Independent	Peace and Freedom	Miscellaneous	Declined to State	Total
MONO COUNTY							
COUNTY TOTALS-----	1,266	1,429	19	28	0	156	2,898
PERCENTAGES-----	43.7	49.3	.7	1.0		5.4	
SUPERVISORIAL DISTRICT 1-	302	365	4	17	0	73	761
SUPERVISORIAL DISTRICT 2-	260	336	1	7	0	36	640
SUPERVISORIAL DISTRICT 3-	263	249	4	2	0	32	550
SUPERVISORIAL DISTRICT 4-	179	253	7	2	0	9	450
SUPERVISORIAL DISTRICT 5-	262	226	3	0	0	6	497
CONGRESSIONAL DISTRICT 18	1,266	1,429	19	28	0	156	2,898
SENATORIAL DISTRICT 15---	1,266	1,429	19	28	0	156	2,898
ASSEMBLY DISTRICT 6-----	1,266	1,429	19	28	0	156	2,898
CITIES							
UNINCORPORATED AREA-----	1,266	1,429	19	28	0	156	2,898
MONTEREY COUNTY							
COUNTY TOTALS-----	44,678	34,422	387	476	37	4,921	84,921
PERCENTAGES-----	52.6	40.5	.5	.6		5.8	
SUPERVISORIAL DISTRICT 1-	8,201	4,530	88	44	7	789	13,659
SUPERVISORIAL DISTRICT 2-	11,056	6,514	156	56	9	726	18,517
SUPERVISORIAL DISTRICT 3-	4,700	4,129	33	26	8	379	9,275
SUPERVISORIAL DISTRICT 4-	8,914	5,820	47	94	6	1,095	15,976

REPORT OF REGISTRATION—SUBDIVISIONS BY COUNTY—Continued

POLITICAL SUBDIVISION	Democratic	Republican	American Independent	Peace and Freedom	Miscellaneous	Declined to State	Total
MONTEREY COUNTY - CONTINUED -							
SUPERVISORIAL DISTRICT 5-	11,807	13,429	63	256	7	1,932	27,494
CONGRESSIONAL DISTRICT 12	44,678	34,422	387	476	37	4,921	84,921
SENATORIAL DISTRICT 17---	44,678	34,422	387	476	37	4,921	84,921
ASSEMBLY DISTRICT 34-----	44,678	34,422	387	476	37	4,921	84,921
CITIES							
CARMEL-----	1,160	1,674	9	27	1	190	3,061
DEL REY OAKS-----	461	356	5	3	0	48	873
GONZALES-----	529	225	2	2	1	8	767
GREENFIELD-----	426	259	4	4	0	21	714
KING CITY-----	530	607	6	1	0	43	1,187
MONTEREY-----	5,484	3,854	35	87	6	842	10,308
PACIFIC GROVE-----	3,438	3,061	19	88	1	544	7,151
SALINAS-----	13,448	8,827	179	64	11	975	23,504
SAND CITY-----	71	16	0	1	0	13	101
SEASIDE-----	4,643	1,431	20	38	2	459	6,593
SOLEDAD-----	765	236	0	4	5	23	1,033
UNINCORPORATED AREA-----	13,723	13,876	108	157	10	1,755	29,629
NAPA COUNTY							
COUNTY TOTALS-----	21,864	16,524	184	134	10	1,601	40,317
PERCENTAGES-----	54.2	41.0	.5	.3		4.0	
SUPERVISORIAL DISTRICT 1-	4,202	2,834	38	37	5	302	7,418

REPORT OF REGISTRATION—SUBDIVISIONS BY COUNTY—Continued

POLITICAL SUBDIVISION	Democratic	Republican	American Independent	Peace and Freedom	Miscellaneous	Declined to State	Total
NAPA COUNTY - CONTINUED -							
SUPERVISORIAL DISTRICT 2-	5,503	3,729	31	21	1	357	9,642
SUPERVISORIAL DISTRICT 3-	3,509	4,996	44	24	0	421	8,994
SUPERVISORIAL DISTRICT 4-	4,859	3,178	35	39	4	288	8,403
SUPERVISORIAL DISTRICT 5-	3,791	1,787	36	13	0	233	5,860
CONGRESSIONAL DISTRICT 1	21,539	16,378	179	134	10	1,589	39,829
CONGRESSIONAL DISTRICT 4	325	146	5	0	0	12	488
SENATORIAL DISTRICT 4---	21,864	16,524	184	134	10	1,601	40,317
ASSEMBLY DISTRICT 5-----	21,864	16,524	184	134	10	1,601	40,317
CITIES							
CALISTOGA-----	577	500	1	4	0	42	1,124
NAPA-----	11,928	7,662	84	69	10	798	20,551
SAINT HELENA-----	849	995	9	0	0	65	1,918
YOUNTVILLE-----	747	472	1	1	0	42	1,263
UNINCORPORATED AREA-----	7,763	6,895	89	60	0	654	15,461
NEVADA COUNTY							
COUNTY TOTALS-----	7,667	6,827	39	23	0	634	15,190
PERCENTAGES-----	50.5	44.9	.3	.2		4.2	
SUPERVISORIAL DISTRICT 1-	1,479	1,447	10	3	0	131	3,070
SUPERVISORIAL DISTRICT 2-	1,528	1,606	8	3	0	114	3,259
SUPERVISORIAL DISTRICT 3-	1,380	1,358	2	4	0	91	2,835
SUPERVISORIAL DISTRICT 4-	1,549	1,265	13	5	0	112	2,944

REPORT OF REGISTRATION—SUBDIVISIONS BY COUNTY—Continued

POLITICAL SUBDIVISION	Democratic	Republican	American Independent	Peace and Freedom	Miscellaneous	Declined to State	Total
NEVADA COUNTY - CONTINUED -							
SUPERVISORIAL DISTRICT 5-	1,731	1,151	6	8	0	186	3,082
CONGRESSIONAL DISTRICT 2	7,667	6,827	39	23	0	634	15,190
SENATORIAL DISTRICT 3---	7,667	6,827	39	23	0	634	15,190
ASSEMBLY DISTRICT 6-----	7,667	6,827	39	23	0	634	15,190
CITIES							
GRASS VALLEY-----	1,385	1,126	2	6	0	94	2,613
NEVADA CITY-----	701	596	2	3	0	55	1,357
UNINCORPORATED AREA-----	5,581	5,105	35	14	0	485	11,220
ORANGE COUNTY							
COUNTY TOTALS-----	283,501	349,351	3,554	1,989	540	42,627	681,562
PERCENTAGES-----	41.6	51.3	.5	.3	.1	6.3	
SUPERVISORIAL DISTRICT 1-	53,056	45,593	772	363	183	7,771	107,738
SUPERVISORIAL DISTRICT 2-	63,548	63,113	637	392	85	7,922	135,697
SUPERVISORIAL DISTRICT 3-	58,962	66,346	584	354	162	7,399	133,807
SUPERVISORIAL DISTRICT 4-	51,165	69,734	974	379	63	8,483	130,798
SUPERVISORIAL DISTRICT 5-	56,770	104,565	587	501	47	11,052	173,522
CONGRESSIONAL DISTRICT 23	58,342	60,462	776	416	94	7,703	127,793
CONGRESSIONAL DISTRICT 25	9,369	11,958	107	50	25	1,075	22,584
CONGRESSIONAL DISTRICT 32	43,024	52,797	338	311	45	6,480	102,995
CONGRESSIONAL DISTRICT 34	70,437	50,827	857	378	202	8,006	130,707

REPORT OF REGISTRATION—SUBDIVISIONS BY COUNTY—Continued

POLITICAL SUBDIVISION	Democratic	Republican	American Independent	Peace and Freedom	Miscellaneous	Declined to State	Total
ORANGE COUNTY - CONTINUED -							
CONGRESSIONAL DISTRICT 39	86,807	138,605	1,342	650	155	15,949	243,508
CONGRESSIONAL DISTRICT 42	15,522	34,702	134	184	19	3,414	53,975
SENATORIAL DISTRICT 34---	173,046	239,752	2,366	1,382	290	29,504	446,340
SENATORIAL DISTRICT 35---	110,455	109,599	1,188	607	250	13,123	235,222
ASSEMBLY DISTRICT 35-----	37,457	49,691	391	240	120	5,255	93,154
ASSEMBLY DISTRICT 69-----	75,004	60,513	876	404	122	8,300	145,219
ASSEMBLY DISTRICT 70-----	92,388	98,203	1,056	710	191	13,780	206,328
ASSEMBLY DISTRICT 71-----	78,652	140,944	1,231	635	107	15,292	236,861
CITIES							
ANAHEIM-----	34,361	34,826	548	242	42	4,678	74,697
BREA-----	3,941	5,362	28	31	3	451	9,816
BUENA PARK-----	12,852	9,295	112	63	26	1,268	23,616
COSTA MESA-----	13,361	16,877	154	153	10	2,476	33,031
CYPRESS-----	7,220	6,534	43	48	7	686	14,538
FOUNTAIN VALLEY-----	7,618	9,746	70	29	19	1,295	18,777
FULLERTON-----	17,487	22,308	166	142	46	2,476	42,625
GARDEN GROVE-----	23,419	20,260	406	133	18	2,910	47,146
HUNTINGTON BEACH-----	25,189	28,598	241	205	21	3,879	58,133
IRVINE-----	3,727	5,993	28	9	12	797	10,566
LAGUNA BEACH-----	3,668	5,196	15	74	1	914	9,868
LA HABRA-----	8,202	9,210	95	41	26	914	18,488
LA PALMA-----	2,324	2,552	18	2	1	245	5,142
LOS ALAMITOS-----	2,265	1,899	10	15	4	220	4,413
NEWPORT BEACH-----	8,643	22,981	103	100	8	1,770	33,605
ORANGE-----	13,071	18,897	277	94	19	2,314	34,672
PLACENTIA-----	4,652	5,733	34	10	49	654	11,132
SAN CLEMENTE-----	2,676	6,011	28	21	2	608	9,346
SAN JUAN CAPISTRANO-----	1,128	2,426	11	1	0	221	3,787
SANTA ANA-----	27,387	24,644	366	211	145	4,323	57,076

REPORT OF REGISTRATION—SUBDIVISIONS BY COUNTY—Continued

POLITICAL SUBDIVISION	Democratic	Republican	American Independent	Peace and Freedom	Miscellaneous	Declined to State	Total
ORANGE COUNTY - CONTINUED -							
SEAL BEACH-----	6,926	9,878	22	51	3	844	17,724
STANTON-----	4,440	3,331	57	16	21	529	8,394
TUSTIN-----	3,652	6,333	70	38	2	933	11,028
VILLA PARK-----	465	1,358	8	2	1	104	1,938
WESTMINSTER-----	12,694	9,823	170	55	25	1,405	24,172
YORBA LINDA-----	2,803	5,025	44	19	3	547	8,441
UNINCORPORATED AREA-----	29,330	54,255	430	184	26	5,166	89,391
PLACER COUNTY							
COUNTY TOTALS-----	22,233	13,891	186	138	4	1,473	37,925
PERCENTAGES-----	58.6	36.6	.5	.4		3.9	
SUPERVISORIAL DISTRICT 1-	4,994	1,724	20	12	1	206	6,957
SUPERVISORIAL DISTRICT 2-	4,043	2,491	45	23	0	239	6,841
SUPERVISORIAL DISTRICT 3-	4,803	3,932	41	27	1	335	9,139
SUPERVISORIAL DISTRICT 4-	4,851	3,102	47	23	0	248	8,271
SUPERVISORIAL DISTRICT 5-	3,542	2,642	33	53	2	445	6,717
CONGRESSIONAL DISTRICT 2	22,233	13,891	186	138	4	1,473	37,925
SENATORIAL DISTRICT 3---	22,233	13,891	186	138	4	1,473	37,925
ASSEMBLY DISTRICT 6-----	22,233	13,891	186	138	4	1,473	37,925
CITIES							
AUBURN-----	1,780	1,674	9	9	0	124	3,596
COLFAX-----	245	152	0	1	0	13	411

REPORT OF REGISTRATION—SUBDIVISIONS BY COUNTY—Continued

POLITICAL SUBDIVISION	Democratic	Republican	American Independent	Peace and Freedom	Miscellaneous	Declined to State	Total
PLACER COUNTY - CONTINUED -							
LINCOLN-----	745	396	7	0	0	44	1,192
ROCKLIN-----	836	407	5	4	0	66	1,318
ROSEVILLE-----	6,100	2,410	30	19	0	258	8,817
UNINCORPORATED AREA-----	12,527	8,852	135	105	4	968	22,591
PLUMAS COUNTY							
COUNTY TOTALS-----	4,094	2,117	35	39	0	273	6,558
PERCENTAGES-----	62.4	32.3	.5	.6		4.2	
SUPERVISORIAL DISTRICT 1-	850	272	4	3	0	43	1,172
SUPERVISORIAL DISTRICT 2-	673	303	12	1	0	37	1,026
SUPERVISORIAL DISTRICT 3-	819	526	1	6	0	52	1,404
SUPERVISORIAL DISTRICT 4-	894	547	8	16	0	84	1,549
SUPERVISORIAL DISTRICT 5-	858	469	10	13	0	57	1,407
CONGRESSIONAL DISTRICT 2	4,094	2,117	35	39	0	273	6,558
SENATORIAL DISTRICT 3---	4,094	2,117	35	39	0	273	6,558
ASSEMBLY DISTRICT 1-----	4,094	2,117	35	39	0	273	6,558
CITIES							
PORTOLA-----	751	197	4	3	0	37	992
UNINCORPORATED AREA-----	3,343	1,920	31	36	0	236	5,566

REPORT OF REGISTRATION—SUBDIVISIONS BY COUNTY—Continued

POLITICAL SUBDIVISION	Democratic	Republican	American Independent	Peace and Freedom	Miscellaneous	Declined to State	Total
RIVERSIDE COUNTY							
COUNTY TOTALS-----	99,407	84,592	773	555	244	9,218	194,789
PERCENTAGES-----	51.0	43.4	.4	.3	.1	4.7	
SUPERVISORIAL DISTRICT 1-	19,871	14,368	201	133	26	1,784	36,383
SUPERVISORIAL DISTRICT 2-	20,784	15,574	216	101	6	1,888	38,569
SUPERVISORIAL DISTRICT 3-	23,083	26,722	178	89	8	1,995	52,075
SUPERVISORIAL DISTRICT 4-	14,515	14,440	68	73	187	1,391	30,674
SUPERVISORIAL DISTRICT 5-	21,154	13,488	110	159	17	2,160	37,088
CONGRESSIONAL DISTRICT 38	25,014	13,267	264	136	19	2,089	40,789
CONGRESSIONAL DISTRICT 43	74,393	71,325	509	419	225	7,129	154,000
SENATORIAL DISTRICT 36---	99,407	84,592	773	555	244	9,218	194,789
ASSEMBLY DISTRICT 74-----	70,567	57,595	598	388	50	6,286	135,484
ASSEMBLY DISTRICT 75-----	28,840	26,997	175	167	194	2,932	59,305
CITIES							
BANNING-----	2,507	1,918	9	10	4	188	4,636
BEAUMONT-----	1,335	1,042	18	1	0	114	2,510
BLYTHE-----	1,205	705	7	3	27	44	1,991
COACHELLA-----	1,177	192	1	1	90	68	1,529
CORONA-----	5,969	4,213	50	12	8	381	10,633
DESERT HOT SPRINGS-----	890	733	4	2	0	72	1,701
ELSINORE-----	1,192	528	7	61	0	62	1,850
HEMET-----	3,694	5,300	30	5	0	232	9,261
INDIAN WELLS-----	67	396	0	1	0	18	482
INDIO-----	2,588	1,482	10	16	29	179	4,304
NORCO-----	2,415	1,612	64	4	0	182	4,277
PALM SPRINGS-----	5,114	5,950	17	30	2	725	11,838
PERRIS-----	1,163	576	7	5	0	115	1,866

REPORT OF REGISTRATION—SUBDIVISIONS BY COUNTY—Continued

POLITICAL SUBDIVISION	Democratic	Republican	American Independent	Peace and Freedom	Miscellaneous	Declined to State	Total
RIVERSIDE COUNTY - CONTINUED -							
RIVERSIDE-----	33,476	26,124	190	222	34	3,461	63,507
SAN JACINTO-----	1,067	831	7	6	0	76	1,987
UNINCORPORATED AREA-----	35,548	32,990	352	176	50	3,301	72,417
SACRAMENTO COUNTY							
COUNTY TOTALS-----	181,241	99,588	1,275	1,553	229	13,022	296,908
PERCENTAGES-----	61.0	33.5	.4	.5	.1	4.4	
SUPERVISORIAL DISTRICT 1-	40,599	16,125	228	472	94	2,486	60,004
SUPERVISORIAL DISTRICT 2-	40,373	18,811	135	374	74	2,315	62,082
SUPERVISORIAL DISTRICT 3-	33,136	21,644	259	258	23	2,870	58,190
SUPERVISORIAL DISTRICT 4-	35,913	24,463	398	248	12	2,908	63,942
SUPERVISORIAL DISTRICT 5-	31,220	18,545	255	201	26	2,443	52,690
CONGRESSIONAL DISTRICT 2	8,077	4,820	115	51	4	628	13,695
CONGRESSIONAL DISTRICT 3	139,305	74,855	817	1,276	192	9,756	226,201
CONGRESSIONAL DISTRICT 4	20,849	12,142	181	157	25	1,766	35,120
CONGRESSIONAL DISTRICT 15	13,010	7,771	162	69	8	872	21,892
SENATORIAL DISTRICT 5---	131,075	64,476	824	1,184	201	8,716	206,476
SENATORIAL DISTRICT 6---	50,166	35,112	451	369	28	4,306	90,432
ASSEMBLY DISTRICT 3-----	75,632	47,919	678	536	54	5,783	130,602
ASSEMBLY DISTRICT 8-----	55,655	28,421	420	481	71	4,145	89,193
ASSEMBLY DISTRICT 9-----	49,954	23,248	177	536	104	3,094	77,113
CITIES							

REPORT OF REGISTRATION—SUBDIVISIONS BY COUNTY—Continued

POLITICAL SUBDIVISION	Democratic	Republican	American Independent	Peace and Freedom	Miscellaneous	Declined to State	Total
SACRAMENTO COUNTY - CONTINUED -							
FOLSOM-----	1,802	1,139	19	6	0	106	3,072
GALT-----	708	441	6	3	0	41	1,199
ISLETON-----	235	72	0	1	0	14	322
SACRAMENTO-----	81,368	35,992	371	829	160	4,893	123,613
UNINCORPORATED AREA-----	97,128	61,944	879	714	69	7,968	168,702
SAN BENITO COUNTY							
COUNTY TOTALS-----	4,038	2,780	41	10	22	189	7,080
PERCENTAGES-----	57.0	39.3	.6	.1	.3	2.7	
SUPERVISORIAL DISTRICT 1-	749	507	9	1	7	33	1,306
SUPERVISORIAL DISTRICT 2-	883	496	9	3	12	60	1,463
SUPERVISORIAL DISTRICT 3-	813	625	5	1	2	38	1,484
SUPERVISORIAL DISTRICT 4-	699	701	8	4	0	33	1,445
SUPERVISORIAL DISTRICT 5-	894	451	10	1	1	25	1,382
CONGRESSIONAL DISTRICT 12	4,038	2,780	41	10	22	189	7,080
SENATORIAL DISTRICT 17---	4,038	2,780	41	10	22	189	7,080
ASSEMBLY DISTRICT 31-----	4,038	2,780	41	10	22	189	7,080
CITIES							
HOLLISTER-----	1,893	1,122	19	3	3	67	3,107
SAN JUAN BAUTISTA-----	336	105	3	0	7	17	468
UNINCORPORATED AREA-----	1,809	1,553	19	7	12	105	3,505

REPORT OF REGISTRATION—SUBDIVISIONS BY COUNTY—Continued

POLITICAL SUBDIVISION	Democratic	Republican	American Independent	Peace and Freedom	Miscellaneous	Declined to State	Total
SAN BERNARDINO COUNTY							
COUNTY TOTALS-----	132,348	103,554	1,478	509	409	10,957	249,255
PERCENTAGES-----	53.1	41.5	.6	.2	.2	4.4	
SUPERVISORIAL DISTRICT 1-	22,756	20,615	371	65	43	2,316	46,166
SUPERVISORIAL DISTRICT 2-	28,411	23,940	236	117	101	2,069	54,874
SUPERVISORIAL DISTRICT 3-	26,505	25,975	281	108	54	2,548	55,471
SUPERVISORIAL DISTRICT 4-	23,526	15,013	275	72	134	1,685	40,705
SUPERVISORIAL DISTRICT 5-	31,150	18,011	315	147	77	2,339	52,039
CONGRESSIONAL DISTRICT 33	69,758	73,409	833	281	117	7,061	151,459
CONGRESSIONAL DISTRICT 38	62,590	30,145	645	228	292	3,896	97,796
SENATORIAL DISTRICT 20---	112,119	78,763	1,236	420	377	8,714	201,629
SENATORIAL DISTRICT 36---	20,229	24,791	242	89	32	2,243	47,626
ASSEMBLY DISTRICT 35-----	21,658	16,899	201	77	141	1,457	40,433
ASSEMBLY DISTRICT 72-----	57,282	31,155	587	221	180	4,006	93,431
ASSEMBLY DISTRICT 73-----	53,408	55,500	690	211	88	5,494	115,391
CITIES							
ADELANTO-----	242	157	6	4	1	28	438
BARSTOW-----	3,624	1,984	16	2	20	370	6,016
CHINO-----	2,847	2,177	26	1	36	175	5,262
COLTON-----	5,158	1,417	26	19	19	278	6,917
FONTANA-----	5,166	2,212	75	21	7	314	7,795
LOMA LINDA-----	625	2,630	6	7	2	266	3,536
MONTCLAIR-----	3,772	2,697	38	29	8	345	6,889
NEEDLES-----	944	425	7	0	0	62	1,438
ONTARIO-----	11,856	9,159	86	32	88	692	21,913
REDLANDS-----	6,812	8,809	36	26	17	836	16,536
RIALTO-----	6,020	3,960	69	18	12	459	10,538

REPORT OF REGISTRATION—SUBDIVISIONS BY COUNTY—Continued

POLITICAL SUBDIVISION	Democratic	Republican	American Independent	Peace and Freedom	Miscellaneous	Declined to State	Total
SAN BERNARDINO COUNTY - CONTINUED -							
SAN BERNARDINO-----	24,739	12,912	207	95	70	1,691	39,714
UPLAND-----	6,460	7,895	20	22	22	579	14,998
VICTORVILLE-----	1,730	1,560	16	9	5	180	3,500
UNINCORPORATED AREA-----	52,353	45,560	844	224	102	4,682	103,765
SAN DIEGO COUNTY							
COUNTY TOTALS-----	288,062	275,305	2,616	2,149	1,473	42,028	611,633
PERCENTAGES-----	47.1	45.0	.4	.4	.2	6.9	
SUPERVISORIAL DISTRICT 1-	46,348	40,523	382	241	517	6,757	94,768
SUPERVISORIAL DISTRICT 2-	64,734	65,533	725	383	100	8,172	139,647
SUPERVISORIAL DISTRICT 3-	70,915	64,888	479	628	243	11,317	148,470
SUPERVISORIAL DISTRICT 4-	52,570	28,803	340	408	514	5,957	88,592
SUPERVISORIAL DISTRICT 5-	53,495	75,558	690	489	99	9,825	140,156
CONGRESSIONAL DISTRICT 40	105,597	110,288	710	908	318	17,650	235,471
CONGRESSIONAL DISTRICT 41	93,938	55,286	761	546	1,024	10,347	161,902
CONGRESSIONAL DISTRICT 42	79,827	96,884	927	619	115	12,764	191,136
CONGRESSIONAL DISTRICT 43	8,700	12,847	218	76	16	1,267	23,124
SENATORIAL DISTRICT 38---	125,495	144,431	1,423	912	253	18,613	291,127
SENATORIAL DISTRICT 39---	92,564	92,856	628	852	315	15,817	203,032
SENATORIAL DISTRICT 40---	70,003	38,018	565	385	905	7,598	117,474
ASSEMBLY DISTRICT 76-----	73,202	69,097	679	418	142	10,242	153,780
ASSEMBLY DISTRICT 77-----	55,675	39,192	550	269	603	6,650	102,939
ASSEMBLY DISTRICT 78-----	50,053	50,394	319	493	171	8,733	110,163
ASSEMBLY DISTRICT 79-----	42,505	19,993	260	305	432	4,198	67,693

REPORT OF REGISTRATION—SUBDIVISIONS BY COUNTY—Continued

POLITICAL SUBDIVISION	Democratic	Republican	American Independent	Peace and Freedom	Miscellaneous	Declined to State	Total
SAN DIEGO COUNTY - CONTINUED -							
ASSEMBLY DISTRICT 80-----	66,627	96,629	808	664	125	12,205	177,058
CITIES							
CARLSBAD-----	2,930	3,520	35	40	4	554	7,083
CHULA VISTA-----	14,629	12,362	107	50	74	1,984	29,206
CORONADO-----	2,084	4,224	19	8	3	572	6,910
DEL MAR-----	1,266	1,225	2	40	2	235	2,770
EL CAJON-----	11,806	10,512	146	65	9	1,467	24,005
ESCONDIDO-----	7,416	10,335	90	30	18	1,368	19,257
IMPERIAL BEACH-----	2,960	1,840	42	22	21	481	5,366
LA MESA-----	9,825	10,877	96	64	13	1,379	22,254
NATIONAL CITY-----	6,601	3,232	78	28	229	688	10,856
OCEANSIDE-----	7,935	8,278	99	41	6	1,131	17,490
SAN DIEGO-----	157,479	136,020	1,027	1,241	924	22,990	319,681
SAN MARCOS-----	1,069	1,572	9	9	1	221	2,881
VISTA-----	4,441	6,286	67	26	9	718	11,547
UNINCORPORATED AREA-----	57,621	65,022	799	485	160	8,240	132,327
SAN FRANCISCO COUNTY							
COUNTY TOTALS-----	213,791	84,178	488	2,067	60	20,462	321,046
PERCENTAGES-----	66.6	26.2	.2	.6		6.4	
SUPERVISORIAL DISTRICTS--	213,791	84,178	488	2,067	60	20,462	321,046
CONGRESSIONAL DISTRICT 5	122,916	34,290	315	1,501	37	12,457	171,516
CONGRESSIONAL DISTRICT 6	90,875	49,888	173	566	23	8,005	149,530

REPORT OF REGISTRATION—SUBDIVISIONS BY COUNTY—Continued

POLITICAL SUBDIVISION	Democratic	Republican	American Independent	Peace and Freedom	Miscellaneous	Declined to State	Total
SAN FRANCISCO COUNTY - CONTINUED -							
SENATORIAL DISTRICT 9/10-	213,791	84,178	488	2,067	60	20,462	321,046
ASSEMBLY DISTRICT 18-----	49,130	17,075	96	730	12	5,883	72,926
ASSEMBLY DISTRICT 19-----	60,242	26,216	117	355	9	4,389	91,328
ASSEMBLY DISTRICT 20-----	40,330	15,514	88	415	17	4,201	60,565
ASSEMBLY DISTRICT 23-----	64,089	25,373	187	567	22	5,989	96,227
CITIES							
SAN FRANCISCO-----	213,791	84,178	488	2,067	60	20,462	321,046
SAN JOAQUIN COUNTY							
COUNTY TOTALS-----	65,964	42,473	467	182	199	5,373	114,658
PERCENTAGES-----	57.5	37.0	.4	.2	.2	4.7	
SUPERVISORIAL DISTRICT 1-	12,302	2,613	50	37	101	652	15,755
SUPERVISORIAL DISTRICT 2-	15,343	12,035	105	75	22	1,575	29,155
SUPERVISORIAL DISTRICT 3-	14,216	7,422	101	37	51	1,175	23,002
SUPERVISORIAL DISTRICT 4-	11,141	12,302	115	14	16	956	24,544
SUPERVISORIAL DISTRICT 5-	12,962	8,101	96	19	9	1,015	22,202
CONGRESSIONAL DISTRICT 15	65,964	42,473	467	182	199	5,373	114,658
SENATORIAL DISTRICT 6---	65,964	42,473	467	182	199	5,373	114,658
ASSEMBLY DISTRICT 12-----	53,662	36,366	382	169	174	4,456	95,209
ASSEMBLY DISTRICT 30-----	12,302	6,107	85	13	25	917	19,449
CITIES							

REPORT OF REGISTRATION—SUBDIVISIONS BY COUNTY—Continued

POLITICAL SUBDIVISION	Democratic	Republican	American Independent	Peace and Freedom	Miscellaneous	Declined to State	Total
SAN JOAQUIN COUNTY - CONTINUED -							
ESCALON-----	577	383	0	0	1	31	992
LODI-----	6,063	7,123	62	5	4	524	13,781
MANTECA-----	3,755	1,836	30	8	2	352	5,983
RIPON-----	503	635	5	0	0	57	1,200
STOCKTON-----	27,325	14,765	146	118	127	2,283	44,764
TRACY-----	3,718	2,089	27	4	1	225	6,064
UNINCORPORATED AREA-----	24,023	15,642	197	47	64	1,901	41,874
SAN LUIS OBISPO COUNTY							
COUNTY TOTALS-----	26,599	22,450	150	285	21	2,771	52,276
PERCENTAGES-----	50.9	42.9	.3	.5		5.3	
SUPERVISORIAL DISTRICT 1-	4,261	4,537	25	23	4	303	9,153
SUPERVISORIAL DISTRICT 2-	5,220	5,025	32	76	0	576	10,929
SUPERVISORIAL DISTRICT 3-	6,729	4,656	33	88	9	784	12,299
SUPERVISORIAL DISTRICT 4-	4,634	3,329	28	25	3	322	8,341
SUPERVISORIAL DISTRICT 5-	5,755	4,903	32	73	5	786	11,554
CONGRESSIONAL DISTRICT 12	18,417	15,608	99	244	14	2,175	36,557
CONGRESSIONAL DISTRICT 36	8,182	6,842	51	41	7	596	15,719
SENATORIAL DISTRICT 17---	26,599	22,450	150	285	21	2,771	52,276
ASSEMBLY DISTRICT 29-----	19,859	17,475	104	247	14	2,242	39,941
ASSEMBLY DISTRICT 36-----	6,740	4,975	46	38	7	529	12,335
CITIES							

REPORT OF REGISTRATION—SUBDIVISIONS BY COUNTY—Continued

POLITICAL SUBDIVISION	Democratic	Republican	American Independent	Peace and Freedom	Miscellaneous	Declined to State	Total
SAN LUIS OBISPO COUNTY - CONTINUED -							
ARROYO GRANDE-----	1,744	1,538	11	9	0	116	3,418
GROVER CITY-----	1,498	682	17	10	1	111	2,319
MORRO BAY-----	2,168	1,930	16	27	0	176	4,317
PASO ROBLES-----	1,174	1,555	5	0	0	69	2,803
PISMO BEACH-----	1,179	963	8	8	3	119	2,280
SAN LUIS OBISPO-----	9,365	7,188	36	132	8	1,263	17,992
UNINCORPORATED AREA-----	9,471	8,594	57	99	9	917	19,147
SAN MATEO COUNTY							
COUNTY TOTALS-----	143,538	101,755	620	869	62	15,190	262,034
PERCENTAGES-----	54.8	38.8	.2	.3		5.8	
SUPERVISORIAL DISTRICT 1-	30,112	11,384	129	113	5	2,347	44,090
SUPERVISORIAL DISTRICT 2-	30,175	29,456	92	175	16	3,384	63,298
SUPERVISORIAL DISTRICT 3-	26,820	26,728	95	158	13	3,256	57,070
SUPERVISORIAL DISTRICT 4-	30,062	22,573	144	235	20	3,574	56,608
SUPERVISORIAL DISTRICT 5-	26,369	11,614	160	188	8	2,629	40,968
CONGRESSIONAL DISTRICT 11	122,337	72,726	560	711	49	12,109	208,492
CONGRESSIONAL DISTRICT 17	21,201	29,029	60	158	13	3,081	53,542
SENATORIAL DISTRICT 12---	143,538	101,755	620	869	62	15,190	262,034
ASSEMBLY DISTRICT 26-----	64,910	61,750	277	494	36	8,180	135,647
ASSEMBLY DISTRICT 27-----	78,628	40,005	343	375	26	7,010	126,387
CITIES							

REPORT OF REGISTRATION—SUBDIVISIONS BY COUNTY—Continued

POLITICAL SUBDIVISION	Democratic	Republican	American Independent	Peace and Freedom	Miscellaneous	Declined to State	Total
SAN MATEO COUNTY - CONTINUED -							
ATHERTON-----	1,208	3,463	4	14	1	247	4,937
BELMONT-----	6,156	5,155	16	24	5	838	12,194
BRISBANE-----	940	290	5	15	0	101	1,351
BURLINGAME-----	6,580	7,181	24	48	4	732	14,569
COLMA-----	105	43	0	1	0	12	161
DALY CITY-----	17,775	6,731	52	68	2	1,312	25,940
FOSTER CITY-----	3,078	3,091	4	9	4	482	6,668
HALF MOON BAY-----	1,195	807	5	10	0	160	2,177
HILLSBOROUGH-----	1,284	3,921	1	4	1	228	5,439
MENLO PARK-----	6,492	7,313	12	45	2	821	14,685
MILLBRAE-----	5,773	4,389	28	22	2	461	10,675
PACIFICA-----	9,202	3,526	91	70	5	1,031	13,925
PORTOLA VALLEY-----	754	1,526	2	5	0	95	2,382
REDWOOD CITY-----	14,277	9,425	92	109	5	1,675	25,583
SAN BRUNO-----	9,802	4,655	33	35	5	818	15,348
SAN CARLOS-----	6,652	6,671	23	40	3	754	14,143
SAN MATEO-----	20,125	16,719	63	120	7	2,190	39,224
SOUTH SAN FRANCISCO-----	13,465	4,687	74	45	0	940	19,211
WOODSIDE-----	944	1,695	6	10	0	162	2,817
UNINCORPORATED AREA-----	17,731	10,467	85	175	16	2,131	30,605
SANTA BARBARA COUNTY							
COUNTY TOTALS-----	62,506	51,598	286	653	260	9,328	124,631
PERCENTAGES-----	50.2	41.4	.2	.5	.2	7.5	
SUPERVISORIAL DISTRICT 1-	14,138	12,412	44	200	77	2,477	29,348
SUPERVISORIAL DISTRICT 2-	13,808	13,896	39	156	47	2,294	30,240
SUPERVISORIAL DISTRICT 3-	16,228	10,155	44	234	84	2,888	29,633

REPORT OF REGISTRATION—SUBDIVISIONS BY COUNTY—Continued

POLITICAL SUBDIVISION	Democratic	Republican	American Independent	Peace and Freedom	Miscellaneous	Declined to State	Total
SANTA BARBARA COUNTY - CONTINUED -							
SUPERVISORIAL DISTRICT 4-	7,552	6,069	75	25	5	786	14,512
SUPERVISORIAL DISTRICT 5-	10,780	9,066	84	38	47	883	20,898
CONGRESSIONAL DISTRICT 13	46,073	41,831	247	407	172	6,388	95,118
CONGRESSIONAL DISTRICT 36	16,433	9,767	39	246	88	2,940	29,513
SENATORIAL DISTRICT 24---	62,506	51,598	286	653	260	9,328	124,631
ASSEMBLY DISTRICT 36-----	62,506	51,598	286	653	260	9,328	124,631
CITIES							
CARPINTERIA-----	1,583	1,154	10	10	31	258	3,046
GUADALUPE-----	585	153	0	1	4	12	755
LOMPOC-----	4,484	3,293	52	18	3	435	8,285
SANTA BARBARA-----	19,500	16,191	54	245	79	3,209	39,278
SANTA MARIA-----	6,876	5,363	54	30	38	501	12,862
UNINCORPORATED AREA-----	29,478	25,444	116	349	105	4,913	60,405
SANTA CLARA COUNTY							
COUNTY TOTALS-----	255,655	178,230	1,144	2,036	1,909	30,432	469,406
PERCENTAGES-----	54.5	38.0	.2	.4	.4	6.5	
SUPERVISORIAL DISTRICT 1-	52,784	43,001	272	351	141	6,006	102,555
SUPERVISORIAL DISTRICT 2-	45,736	19,179	205	507	1,196	4,192	71,015
SUPERVISORIAL DISTRICT 3-	49,232	29,039	234	269	342	6,097	85,213
SUPERVISORIAL DISTRICT 4-	50,585	35,197	256	359	154	5,804	92,355
SUPERVISORIAL DISTRICT 5-	57,318	51,814	177	550	76	8,333	118,268

REPORT OF REGISTRATION—SUBDIVISIONS BY COUNTY—Continued

POLITICAL SUBDIVISION	Democratic	Republican	American Independent	Peace and Freedom	Miscellaneous	Declined to State	Total
SANTA CLARA COUNTY - CONTINUED -							
CONGRESSIONAL DISTRICT 9	53,514	20,329	222	561	1,017	5,146	80,789
CONGRESSIONAL DISTRICT 10	109,539	101,096	537	805	211	13,582	225,770
CONGRESSIONAL DISTRICT 12	1,029	459	1	7	11	79	1,586
CONGRESSIONAL DISTRICT 17	91,573	56,346	384	663	670	11,625	161,261
SENATORIAL DISTRICT 13---	143,097	78,671	669	1,117	1,638	16,085	241,277
SENATORIAL DISTRICT 14---	112,558	99,559	475	919	271	14,347	228,129
ASSEMBLY DISTRICT 22-----	76,110	76,148	266	732	114	11,128	164,498
ASSEMBLY DISTRICT 24-----	81,441	50,197	401	526	224	9,769	142,558
ASSEMBLY DISTRICT 25-----	98,104	51,885	477	778	1,571	9,535	162,350
CITIES							
CAMPBELL-----	5,730	3,667	36	47	12	755	10,247
CUPERTINO-----	4,195	4,866	15	26	1	675	9,778
GILROY-----	2,643	1,653	6	6	23	211	4,542
LOS ALTOS-----	5,552	8,533	15	43	0	834	14,977
LOS ALTOS HILLS-----	1,533	2,254	11	13	0	258	4,069
LOS GATOS-----	5,012	5,724	21	63	5	747	11,572
MILPITAS-----	6,231	2,698	41	18	26	730	9,744
MONTE SERENO-----	598	905	2	8	0	114	1,627
MORGAN HILL-----	1,214	830	2	8	7	101	2,162
MOUNTAIN VIEW-----	13,394	9,470	57	116	22	2,175	25,234
PALO ALTO-----	16,355	13,651	34	207	19	2,228	32,494
SAN JOSE-----	110,472	66,210	533	892	1,467	11,445	191,019
SANTA CLARA-----	21,488	10,855	123	119	60	2,277	34,922
SARATOGA-----	5,176	8,710	25	45	4	854	14,814
SUNNYVALE-----	22,478	16,778	98	103	35	3,263	42,755
UNINCORPORATED AREA-----	33,584	21,426	125	322	228	3,765	59,450

REPORT OF REGISTRATION—SUBDIVISIONS BY COUNTY—Continued

POLITICAL SUBDIVISION	Democratic	Republican	American Independent	Peace and Freedom	Miscellaneous	Declined to State	Total
SANTA CRUZ COUNTY							
COUNTY TOTALS-----	37,955	28,142	234	854	65	4,627	71,877
PERCENTAGES-----	52.8	39.2	.3	1.2	.1	6.4	
SUPERVISORIAL DISTRICT 1-	7,521	6,204	61	162	10	889	14,847
SUPERVISORIAL DISTRICT 2-	7,384	6,594	42	159	5	942	15,126
SUPERVISORIAL DISTRICT 3-	9,207	4,958	39	222	21	1,138	15,585
SUPERVISORIAL DISTRICT 4-	6,038	3,538	15	21	11	432	10,055
SUPERVISORIAL DISTRICT 5-	7,805	6,848	77	290	18	1,226	16,264
CONGRESSIONAL DISTRICT 12	37,955	28,142	234	854	65	4,627	71,877
SENATORIAL DISTRICT 17---	37,955	28,142	234	854	65	4,627	71,877
ASSEMBLY DISTRICT 31-----	37,955	28,142	234	854	65	4,627	71,877
CITIES							
CAPITOLA-----	1,826	1,393	11	37	3	242	3,512
SANTA CRUZ-----	11,142	6,671	46	265	24	1,332	19,480
SCOTTS VALLEY-----	990	1,484	15	10	6	141	2,646
WATSONVILLE-----	3,302	2,075	10	9	9	231	5,636
UNINCORPORATED AREA-----	20,695	16,519	152	533	23	2,681	40,603
SHASTA COUNTY							
COUNTY TOTALS-----	22,474	12,730	53	53	7	1,251	36,568
PERCENTAGES-----	61.5	34.8	.1	.1		3.4	

REPORT OF REGISTRATION—SUBDIVISIONS BY COUNTY—Continued

POLITICAL SUBDIVISION	Democratic	Republican	American Independent	Peace and Freedom	Miscellaneous	Declined to State	Total
SHASTA COUNTY - CONTINUED -							
SUPERVISORIAL DISTRICT 1-	4,088	2,663	11	14	3	250	7,029
SUPERVISORIAL DISTRICT 2-	4,429	2,155	9	13	1	249	6,856
SUPERVISORIAL DISTRICT 3-	4,299	2,657	13	8	1	263	7,241
SUPERVISORIAL DISTRICT 4-	4,981	2,691	7	6	1	254	7,940
SUPERVISORIAL DISTRICT 5-	4,677	2,564	13	12	1	235	7,502
CONGRESSIONAL DISTRICT 2	22,474	12,730	53	53	7	1,251	36,568
SENATORIAL DISTRICT 2---	22,474	12,730	53	53	7	1,251	36,568
ASSEMBLY DISTRICT 1-----	22,474	12,730	53	53	7	1,251	36,568
CITIES							
ANDERSON-----	1,539	690	1	0	1	87	2,318
REDDING-----	4,769	3,027	11	14	3	295	8,119
UNINCORPORATED AREA-----	16,166	9,013	41	39	3	869	26,131
SIERRA COUNTY							
COUNTY TOTALS-----	821	485	0	1	0	63	1,370
PERCENTAGES-----	59.9	35.4		.1		4.6	
SUPERVISORIAL DISTRICT 1-	206	132	0	0	0	15	353
SUPERVISORIAL DISTRICT 2-	183	158	0	1	0	15	357
SUPERVISORIAL DISTRICT 3-	151	94	0	0	0	12	257
SUPERVISORIAL DISTRICT 4-	154	40	0	0	0	12	206
SUPERVISORIAL DISTRICT 5-	127	61	0	0	0	9	197

REPORT OF REGISTRATION—SUBDIVISIONS BY COUNTY—Continued

POLITICAL SUBDIVISION	Democratic	Republican	American Independent	Peace and Freedom	Miscellaneous	Declined to State	Total
SIERRA COUNTY - CONTINUED -							
CONGRESSIONAL DISTRICT 2	821	485	0	1	0	63	1,370
SENATORIAL DISTRICT 3---	821	485	0	1	0	63	1,370
ASSEMBLY DISTRICT 1-----	821	485	0	1	0	63	1,370
CITIES							
LOYALTON-----	281	101	0	0	0	21	403
UNINCORPORATED AREA-----	540	384	0	1	0	42	967
SISKIYOU COUNTY							
COUNTY TOTALS-----	9,299	5,385	28	42	3	572	15,329
PERCENTAGES-----	60.7	35.1	.2	.3		3.7	
SUPERVISORIAL DISTRICT 1-	1,724	907	5	5	0	124	2,765
SUPERVISORIAL DISTRICT 2-	2,433	1,029	4	15	1	98	3,580
SUPERVISORIAL DISTRICT 3-	2,051	933	8	8	2	97	3,099
SUPERVISORIAL DISTRICT 4-	1,618	1,330	2	5	0	111	3,066
SUPERVISORIAL DISTRICT 5-	1,473	1,186	9	9	0	142	2,819
CONGRESSIONAL DISTRICT 2	9,299	5,385	28	42	3	572	15,329
SENATORIAL DISTRICT 1---	9,299	5,385	28	42	3	572	15,329
ASSEMBLY DISTRICT 1-----	9,299	5,385	28	42	3	572	15,329
CITIES							

REPORT OF REGISTRATION—SUBDIVISIONS BY COUNTY—Continued

POLITICAL SUBDIVISION	Democratic	Republican	American Independent	Peace and Freedom	Miscellaneous	Declined to State	Total
SISKIYOU COUNTY - CONTINUED -							
DORRIS-----	260	100	0	0	0	18	378
DUNSMUIR-----	888	292	1	7	0	20	1,208
ETNA-----	181	134	0	0	0	13	328
FORT JONES-----	140	121	1	0	0	11	273
MONTAGUE-----	201	114	4	2	0	11	332
MOUNT SHASTA-----	819	340	0	3	1	30	1,193
TULELAKE-----	176	136	0	0	0	4	316
WEED-----	1,099	264	3	2	0	35	1,403
YREKA-----	1,330	1,096	2	4	0	91	2,523
UNINCORPORATED AREA-----	4,205	2,788	17	24	2	339	7,375
SOLANO COUNTY							
COUNTY TOTALS-----	39,822	18,389	255	200	9	1,998	60,673
PERCENTAGES-----	65.6	30.3	.4	.3		3.3	
SUPERVISORIAL DISTRICT 1-	9,648	3,824	62	56	1	287	13,878
SUPERVISORIAL DISTRICT 2-	8,908	2,651	74	46	1	219	11,899
SUPERVISORIAL DISTRICT 3-	8,557	4,050	63	39	1	539	13,249
SUPERVISORIAL DISTRICT 4-	7,972	5,003	36	38	0	594	13,643
SUPERVISORIAL DISTRICT 5-	4,737	2,861	20	21	6	359	8,004
CONGRESSIONAL DISTRICT 4	39,822	18,389	255	200	9	1,998	60,673
SENATORIAL DISTRICT 2---	1,617	1,117	4	7	5	110	2,860
SENATORIAL DISTRICT 4---	38,205	17,272	251	193	4	1,888	57,813
ASSEMBLY DISTRICT 5----	39,822	18,389	255	200	9	1,998	60,673

REPORT OF REGISTRATION—SUBDIVISIONS BY COUNTY—Continued

POLITICAL SUBDIVISION	Democratic	Republican	American Independent	Peace and Freedom	Miscellaneous	Declined to State	Total
SOLANO COUNTY - CONTINUED -							
CITIES							
BENICIA-----	2,232	861	12	22	0	174	3,301
DIXON-----	914	710	2	1	0	59	1,686
FAIRFIELD-----	7,370	3,982	43	21	1	604	12,021
RIO VISTA-----	784	607	5	0	0	34	1,430
SUISUN CITY-----	416	141	1	4	0	27	589
VACAVILLE-----	4,750	3,172	22	21	0	362	8,327
VALLEJO-----	19,793	6,732	150	100	2	535	27,312
UNINCORPORATED AREA-----	3,563	2,184	20	31	6	203	6,007
SONOMA COUNTY							
COUNTY TOTALS-----	57,863	43,067	479	1,282	53	5,329	108,073
PERCENTAGES-----	53.5	39.8	.4	1.2		4.9	
SUPERVISORIAL DISTRICT 1-	11,300	10,574	123	137	3	993	23,130
SUPERVISORIAL DISTRICT 2-	11,333	7,696	88	330	1	1,073	20,521
SUPERVISORIAL DISTRICT 3-	12,134	9,190	64	199	18	1,042	22,647
SUPERVISORIAL DISTRICT 4-	10,472	8,359	76	160	14	925	20,006
SUPERVISORIAL DISTRICT 5-	12,624	7,248	128	456	17	1,296	21,769
CONGRESSIONAL DISTRICT 1	57,863	43,067	479	1,282	53	5,329	108,073
SENATORIAL DISTRICT 1---	57,863	43,067	479	1,282	53	5,329	108,073
ASSEMBLY DISTRICT 2-----	32,647	25,746	227	593	42	2,897	62,152
ASSEMBLY DISTRICT 7-----	25,216	17,321	252	689	11	2,432	45,921

REPORT OF REGISTRATION—SUBDIVISIONS BY COUNTY—Continued

POLITICAL SUBDIVISION	Democratic	Republican	American Independent	Peace and Freedom	Miscellaneous	Declined to State	Total
SONOMA COUNTY - CONTINUED -							
CITIES							
CLOVERDALE-----	877	516	5	0	0	49	1,447
COTATI-----	662	222	4	120	0	93	1,101
HEALDSBURG-----	1,386	1,134	7	11	2	97	2,637
PETALUMA-----	6,932	4,800	49	89	1	567	12,438
ROHNERT PARK-----	1,768	952	12	31	0	211	2,974
SANTA ROSA-----	15,096	14,246	92	203	13	1,330	30,980
SEBASTOPOL-----	1,094	905	11	11	2	95	2,118
SONOMA-----	1,249	1,422	16	3	0	96	2,786
UNINCORPORATED AREA-----	28,799	18,870	283	814	35	2,791	51,592
STANISLAUS COUNTY							
COUNTY TOTALS-----	47,270	29,035	191	105	141	2,422	79,164
PERCENTAGES-----	59.7	36.7	.2	.1	.2	3.1	
SUPERVISORIAL DISTRICT 1-	10,511	6,959	55	16	10	557	18,108
SUPERVISORIAL DISTRICT 2-	8,490	6,747	26	29	24	453	15,769
SUPERVISORIAL DISTRICT 3-	10,113	4,506	55	25	11	525	15,235
SUPERVISORIAL DISTRICT 4-	10,416	7,854	38	26	8	588	18,930
SUPERVISORIAL DISTRICT 5-	7,740	2,969	17	9	88	299	11,122
CONGRESSIONAL DISTRICT 15	30,495	15,291	127	61	112	1,434	47,520
CONGRESSIONAL DISTRICT 18	16,775	13,744	64	44	29	988	31,644
SENATORIAL DISTRICT 3---	47,270	29,035	191	105	141	2,422	79,164
ASSEMBLY DISTRICT 30-----	47,270	29,035	191	105	141	2,422	79,164

REPORT OF REGISTRATION—SUBDIVISIONS BY COUNTY—Continued

POLITICAL SUBDIVISION	Democratic	Republican	American Independent	Peace and Freedom	Miscellaneous	Declined to State	Total
STANISLAUS COUNTY - CONTINUED -							
CITIES							
CERES-----	1,726	824	7	1	0	79	2,637
MODESTO-----	18,062	11,500	78	45	12	1,083	30,780
NEWMAN-----	666	221	0	0	0	22	909
OAKDALE-----	1,566	1,125	5	2	1	75	2,774
PATTERSON-----	703	391	0	0	64	25	1,183
RIVERBANK-----	931	222	2	0	0	35	1,190
TURLOCK-----	3,693	3,304	4	14	10	230	7,255
WATERFORD-----	494	247	13	0	0	20	774
UNINCORPORATED AREA-----	19,429	11,201	82	43	54	853	31,662
SUTTER COUNTY							
COUNTY TOTALS-----	8,473	7,601	28	23	21	634	16,780
PERCENTAGES-----	50.5	45.3	.2	.1	.1	3.8	
SUPERVISORIAL DISTRICT 1-	1,759	1,337	8	3	13	118	3,238
SUPERVISORIAL DISTRICT 2-	1,785	1,405	3	7	3	139	3,342
SUPERVISORIAL DISTRICT 3-	1,670	1,499	5	2	1	124	3,301
SUPERVISORIAL DISTRICT 4-	1,766	2,028	5	7	4	163	3,973
SUPERVISORIAL DISTRICT 5-	1,493	1,332	7	4	0	90	2,926
CONGRESSIONAL DISTRICT 4	8,473	7,601	28	23	21	634	16,780
SENATORIAL DISTRICT 2---	8,473	7,601	28	23	21	634	16,780
ASSEMBLY DISTRICT 4-----	8,473	7,601	28	23	21	634	16,780

REPORT OF REGISTRATION—SUBDIVISIONS BY COUNTY—Continued

POLITICAL SUBDIVISION	Democratic	Republican	American Independent	Peace and Freedom	Miscellaneous	Declined to State	Total
SUTTER COUNTY - CONTINUED -							
CITIES							
LIVE OAK-----	496	267	0	1	5	34	803
YUBA CITY-----	2,906	2,402	7	11	11	234	5,571
UNINCORPORATED AREA-----	5,071	4,932	21	11	5	366	10,406
TEHAMA COUNTY							
COUNTY TOTALS-----	7,273	4,849	74	39	1	456	12,692
PERCENTAGES-----	57.3	38.2	.6	.3		3.6	
SUPERVISORIAL DISTRICT 1-	1,431	1,054	19	9	0	93	2,606
SUPERVISORIAL DISTRICT 2-	1,590	818	21	5	0	119	2,553
SUPERVISORIAL DISTRICT 3-	1,520	1,021	16	8	0	127	2,692
SUPERVISORIAL DISTRICT 4-	1,382	1,022	5	10	1	52	2,472
SUPERVISORIAL DISTRICT 5-	1,350	934	13	7	0	65	2,369
CONGRESSIONAL DISTRICT 2	7,273	4,849	74	39	1	456	12,692
SENATORIAL DISTRICT 2---	7,273	4,849	74	39	1	456	12,692
ASSEMBLY DISTRICT 1-----	7,273	4,849	74	39	1	456	12,692
CITIES							
CORNING-----	786	572	2	5	0	15	1,380
RED BLUFF-----	1,968	1,192	29	11	0	142	3,342
TEHAMA-----	64	60	1	0	0	5	130
UNINCORPORATED AREA-----	4,455	3,025	42	23	1	294	7,840

REPORT OF REGISTRATION—SUBDIVISIONS BY COUNTY—Continued

POLITICAL SUBDIVISION	Democratic	Republican	American Independent	Peace and Freedom	Miscellaneous	Declined to State	Total
TRINITY COUNTY							
COUNTY TOTALS-----	2,307	1,331	33	11	0	144	3,826
PERCENTAGES-----	60.3	34.8	.9	.3		3.8	
SUPERVISORIAL DISTRICT 1-	522	361	7	5	0	23	918
SUPERVISORIAL DISTRICT 2-	391	313	4	1	0	24	733
SUPERVISORIAL DISTRICT 3-	476	214	12	1	0	38	741
SUPERVISORIAL DISTRICT 4-	477	243	7	2	0	36	765
SUPERVISORIAL DISTRICT 5-	441	200	3	2	0	23	669
CONGRESSIONAL DISTRICT 2	2,307	1,331	33	11	0	144	3,826
SENATORIAL DISTRICT 1---	2,307	1,331	33	11	0	144	3,826
ASSEMBLY DISTRICT 1-----	2,307	1,331	33	11	0	144	3,826
CITIES							
UNINCORPORATED AREA-----	2,307	1,331	33	11	0	144	3,826
TULARE COUNTY							
COUNTY TOTALS-----	34,410	25,351	389	111	41	1,883	62,185
PERCENTAGES-----	55.3	40.8	.6	.2	.1	3.0	
SUPERVISORIAL DISTRICT 1-	6,129	5,347	103	13	10	341	11,943
SUPERVISORIAL DISTRICT 2-	7,068	3,410	81	5	7	276	10,847
SUPERVISORIAL DISTRICT 3-	8,082	7,615	77	49	9	601	16,433
SUPERVISORIAL DISTRICT 4-	6,597	4,444	66	23	7	343	11,480

REPORT OF REGISTRATION—SUBDIVISIONS BY COUNTY—Continued

POLITICAL SUBDIVISION	Democratic	Republican	American Independent	Peace and Freedom	Miscellaneous	Declined to State	Total
TULARE COUNTY - CONTINUED -							
SUPERVISORIAL DISTRICT 5-	6,534	4,535	62	21	8	322	11,482
CONGRESSIONAL DISTRICT 18	34,410	25,351	389	111	41	1,883	62,185
SENATORIAL DISTRICT 15---	34,410	25,351	389	111	41	1,883	62,185
ASSEMBLY DISTRICT 21-----	32,614	24,550	354	111	38	1,794	59,461
ASSEMBLY DISTRICT 29-----	1,796	801	35	0	3	89	2,724
CITIES							
DINUBA-----	1,595	1,007	9	2	5	59	2,677
EXETER-----	816	790	8	1	1	34	1,650
FARMERSVILLE-----	478	162	20	0	0	30	690
LINDSAY-----	935	842	3	2	1	45	1,828
PORTERVILLE-----	2,120	1,895	22	10	6	126	4,179
TULARE-----	3,594	1,750	25	2	2	117	5,490
VISALIA-----	6,236	5,979	54	39	9	470	12,787
WOODLAKE-----	609	241	11	0	0	18	879
UNINCORPORATED AREA-----	18,027	12,685	237	55	17	984	32,005
TUOLUMNE COUNTY							
COUNTY TOTALS-----	6,299	4,444	41	36	0	301	11,121
PERCENTAGES-----	56.6	40.0	.4	.3		2.7	
SUPERVISORIAL DISTRICT 1-	1,192	869	5	4	0	43	2,113
SUPERVISORIAL DISTRICT 2-	1,188	1,009	8	10	0	76	2,291
SUPERVISORIAL DISTRICT 3-	1,244	912	15	13	0	78	2,262

REPORT OF REGISTRATION—SUBDIVISIONS BY COUNTY—Continued

POLITICAL SUBDIVISION	Democratic	Republican	American Independent	Peace and Freedom	Miscellaneous	Declined to State	Total
TUOLUMNE COUNTY - CONTINUED -							
SUPERVISORIAL DISTRICT 4-	1,259	876	6	4	0	54	2,199
SUPERVISORIAL DISTRICT 5-	1,416	778	7	5	0	50	2,256
CONGRESSIONAL DISTRICT 18	6,299	4,444	41	36	0	301	11,121
SENATORIAL DISTRICT 3---	6,299	4,444	41	36	0	301	11,121
ASSEMBLY DISTRICT 6-----	6,299	4,444	41	36	0	301	11,121
CITIES							
SONORA-----	1,047	791	5	3	0	37	1,883
UNINCORPORATED AREA-----	5,252	3,653	36	33	0	264	9,238
VENTURA COUNTY							
COUNTY TOTALS-----	77,582	67,642	647	534	832	7,768	155,005
PERCENTAGES-----	50.1	43.6	.4	.3	.5	5.0	
SUPERVISORIAL DISTRICT 1-	16,865	12,816	94	97	341	1,451	31,664
SUPERVISORIAL DISTRICT 2-	15,630	20,088	153	96	39	2,207	38,213
SUPERVISORIAL DISTRICT 3-	15,956	11,970	114	137	194	1,156	29,527
SUPERVISORIAL DISTRICT 4-	14,361	13,788	177	104	81	1,422	29,933
SUPERVISORIAL DISTRICT 5-	14,770	8,980	109	100	177	1,532	25,668
CONGRESSIONAL DISTRICT 13	57,946	56,308	501	413	369	5,857	121,394
CONGRESSIONAL DISTRICT 27	19,636	11,334	146	121	463	1,911	33,611
SENATORIAL DISTRICT 24---	77,582	67,642	647	534	832	7,768	155,005

REPORT OF REGISTRATION—SUBDIVISIONS BY COUNTY—Continued

POLITICAL SUBDIVISION	Democratic	Republican	American Independent	Peace and Freedom	Miscellaneous	Declined to State	Total
VENTURA COUNTY - CONTINUED -							
ASSEMBLY DISTRICT 37-----	77,582	67,642	647	534	832	7,768	155,005
CITIES							
CAMARILLO-----	4,405	4,620	35	31	16	517	9,624
FILLMORE-----	1,211	833	7	3	37	64	2,155
OJAI-----	1,426	1,304	5	25	1	115	2,876
OXNARD-----	14,224	7,959	91	70	407	1,333	24,084
PORT HUENEME-----	2,346	1,824	25	20	21	312	4,548
SANTA PAULA-----	3,440	2,523	26	5	115	178	6,287
SIMI VALLEY-----	11,394	10,263	138	67	46	1,101	23,009
THOUSAND OAKS-----	7,770	10,827	97	50	18	1,184	19,946
VENTURA-----	14,609	12,617	81	117	37	1,379	28,840
UNINCORPORATED AREA-----	16,757	14,872	142	146	134	1,585	33,636
YOLO COUNTY							
COUNTY TOTALS-----	27,578	13,835	97	214	238	1,973	43,935
PERCENTAGES-----	62.8	31.5	.2	.5	.5	4.5	
SUPERVISORIAL DISTRICT 1-	5,068	1,829	40	16	40	222	7,215
SUPERVISORIAL DISTRICT 2-	8,108	3,874	10	97	67	794	12,950
SUPERVISORIAL DISTRICT 3-	3,596	1,512	19	21	27	161	5,336
SUPERVISORIAL DISTRICT 4-	6,152	4,138	21	50	69	445	10,875
SUPERVISORIAL DISTRICT 5-	4,654	2,482	7	30	35	351	7,559
CONGRESSIONAL DISTRICT 4	27,578	13,835	97	214	238	1,973	43,935
SENATORIAL DISTRICT 2---	27,578	13,835	97	214	238	1,973	43,935

REPORT OF REGISTRATION—SUBDIVISIONS BY COUNTY—Continued

POLITICAL SUBDIVISION	Democratic	Republican	American Independent	Peace and Freedom	Miscellaneous	Declined to State	Total
YOLO COUNTY							
- CONTINUED -							
ASSEMBLY DISTRICT 4-----	20,423	11,453	41	188	183	1,653	33,941
ASSEMBLY DISTRICT 9-----	7,155	2,382	56	26	55	320	9,994
CITIES							
DAVIS-----	10,587	5,092	24	125	92	1,019	16,939
WINTERS-----	574	299	0	1	3	49	926
WOODLAND-----	5,194	3,629	11	33	55	254	9,176
UNINCORPORATED AREA-----	11,223	4,815	62	55	88	651	16,894
YUBA COUNTY							
COUNTY TOTALS-----	7,255	4,234	25	27	185	482	12,208
PERCENTAGES-----	59.4	34.7	.2	.2	1.5	3.9	
SUPERVISORIAL DISTRICT 1-	1,754	1,104	0	7	35	104	3,004
SUPERVISORIAL DISTRICT 2-	1,760	1,132	4	7	40	108	3,051
SUPERVISORIAL DISTRICT 3-	1,628	503	14	5	34	112	2,296
SUPERVISORIAL DISTRICT 4-	1,093	803	4	2	38	84	2,024
SUPERVISORIAL DISTRICT 5-	1,020	692	3	6	38	74	1,833
CONGRESSIONAL DISTRICT 4	7,255	4,234	25	27	185	482	12,208
SENATORIAL DISTRICT 2---	7,255	4,234	25	27	185	482	12,208
ASSEMBLY DISTRICT 6-----	7,255	4,234	25	27	185	482	12,208
CITIES							

REPORT OF REGISTRATION—SUBDIVISIONS BY COUNTY—Continued

POLITICAL SUBDIVISION	Democratic	Republican	American Independent	Peace and Freedom	Miscellaneous	Declined to State	Total
YUBA COUNTY - CONTINUED -							
MARYSVILLE-----	2,068	1,652	2	7	44	124	3,897
WHEATLAND-----	294	164	0	1	8	19	486
UNINCORPORATED AREA-----	4,893	2,418	23	19	133	339	7,825

REPORT OF REGISTRATION—CITIES—Continued

CITIES	Democratic	Republican	American Independent	Peace and Freedom	Miscellaneous	Declined to State	Total
ADELANTO-----	242	157	6	4	1	28	438
ALAMEDA-----	14,086	10,306	47	67	21	1,764	26,291
ALBANY-----	5,252	2,193	43	30	26	404	7,948
ALHAMBRA-----	15,729	13,703	120	76	156	1,489	31,273
ALTURAS-----	912	429	0	0	0	49	1,390
AMADOR-----	43	28	1	0	1	0	73
ANAHEIM-----	34,361	34,826	548	242	42	4,678	74,697
ANDERSON-----	1,539	690	1	0	1	87	2,318
ANGELS-----	701	419	7	1	0	38	1,166
ANTIOCH-----	9,080	2,932	20	19	1	577	12,629
ARCADIA-----	7,676	17,553	100	46	13	1,090	26,478
ARCATA-----	3,825	1,545	5	57	3	524	5,959
ARROYO GRANDE-----	1,744	1,538	11	9	0	116	3,418
ARTESIA-----	2,369	1,566	26	19	23	203	4,206
ARVIN-----	963	294	20	0	1	19	1,297
ATHERTON-----	1,208	3,463	4	14	1	247	4,937
ATWATER-----	1,558	1,030	19	10	0	229	2,846
AUBURN-----	1,780	1,674	9	9	0	124	3,596
AVALON-----	415	528	14	9	0	34	1,000
AZUSA-----	5,114	2,777	73	37	29	453	8,483
BAKERSFIELD-----	18,111	13,147	221	47	14	983	32,523
BALDWIN PARK-----	8,352	3,312	130	49	67	586	12,496
BANNING-----	2,507	1,918	9	10	4	188	4,636
BARSTOW-----	3,624	1,984	16	2	20	370	6,016
BEAUMONT-----	1,335	1,042	18	1	0	114	2,510
BELL-----	4,313	2,118	70	19	13	259	6,792
BELL GARDENS-----	4,349	1,241	218	19	19	257	6,103
BELLFLOWER-----	12,094	7,212	181	72	26	994	20,579
BELMONT-----	6,156	5,155	16	24	5	838	12,194
BELVEDERE-----	515	1,061	1	5	0	75	1,657
BENICIA-----	2,232	861	12	22	0	174	3,301
BERKELEY-----	51,443	11,410	49	1,067	227	5,801	69,997
BEVERLY HILLS-----	12,554	6,734	8	61	12	1,172	20,541
BIGGS-----	279	138	2	1	0	12	432
BISHOP-----	777	816	13	2	1	91	1,700
BLUE LAKE-----	373	123	4	3	0	43	546

REPORT OF REGISTRATION—CITIES—Continued

CITIES	Democratic	Republican	American Independent	Peace and Freedom	Miscellaneous	Declined to State	Total
BLYTE-----	1,205	705	7	3	27	44	1,991
BRADBURY-----	105	285	1	3	0	22	416
BRAWLEY-----	2,748	1,688	7	6	15	158	4,622
BREA-----	3,941	5,362	28	31	3	451	9,816
BRENTWOOD-----	736	312	5	4	0	28	1,085
BRISBANE-----	940	290	5	15	0	101	1,351
BUENA PARK-----	12,852	9,295	112	63	26	1,268	23,616
BURBANK-----	20,598	20,419	224	106	39	1,965	43,351
BURLINGAME-----	6,580	7,181	24	48	4	732	14,569
CALEXICO-----	1,327	575	3	6	18	150	2,079
CALIFORNIA CITY-----	412	357	7	1	1	76	854
CALIPATRIA-----	374	164	0	0	2	23	563
CALISTOGA-----	577	500	1	4	0	42	1,124
CAMARILLO-----	4,405	4,620	35	31	16	517	9,624
CAMPBELL-----	5,730	3,667	36	47	12	755	10,247
CAPITOLA-----	1,826	1,393	11	37	3	242	3,512
CARLSBAD-----	2,930	3,520	35	40	4	554	7,083
CARMEL-----	1,160	1,674	9	27	1	190	3,061
CARPINTERIA-----	1,583	1,154	10	10	31	258	3,046
CARSON-----	16,312	4,925	213	65	80	1,207	22,802
CERES-----	1,726	824	7	1	0	79	2,637
CERRITOS-----	7,440	6,356	54	21	28	837	14,736
CHICO-----	5,591	3,859	20	115	3	850	10,438
CHINO-----	2,847	2,177	26	1	36	175	5,262
CHOWCHILLA-----	902	491	8	1	0	17	1,419
CHULA VISTA-----	14,629	12,362	107	50	74	1,984	29,206
CLAREMONT-----	5,514	6,369	23	73	29	614	12,622
CLAYTON-----	325	311	0	1	0	27	664
CLOVERDALE-----	877	516	5	0	0	49	1,447
COACHES-----	3,864	2,151	66	12	5	278	6,376
COACHELLA-----	1,177	192	1	1	90	68	1,529
COALINGA-----	1,530	803	12	1	0	65	2,411
COLFAX-----	245	152	0	1	0	13	411
COLMA-----	105	43	0	1	0	12	161
COLTON-----	5,158	1,417	26	19	19	278	6,917
COLUSA-----	886	648	1	0	0	32	1,567

REPORT OF REGISTRATION—CITIES—Continued

CITIES	Democratic	Republican	American Independent	Peace and Freedom	Miscellaneous	Declined to State	Total
COMMERCE-----	2,276	265	31	8	75	111	2,766
COMPTON-----	19,422	1,327	26	53	72	639	21,539
CONCORD-----	22,751	14,850	145	98	8	1,866	39,718
CORCORAN-----	1,059	549	6	1	0	44	1,659
CORNING-----	786	572	2	5	0	15	1,380
CORONA-----	5,969	4,213	50	12	8	381	10,633
CORONADO-----	2,084	4,224	19	8	3	572	6,910
CORTE MADERA-----	2,402	1,955	6	15	1	351	4,730
COSTA MESA-----	13,361	16,877	154	153	10	2,476	33,031
COTATI-----	662	222	4	120	0	93	1,101
COVINA-----	6,658	6,892	68	39	7	867	14,531
CRESCENT CITY-----	586	449	2	2	0	59	1,098
CUDAHY-----	2,185	780	32	15	22	189	3,223
CULVER CITY-----	9,888	6,210	62	65	16	980	17,221
CUPERTINO-----	4,195	4,866	15	26	1	675	9,778
CYPRESS-----	7,220	6,534	43	48	7	686	14,538
DALY CITY-----	17,775	6,731	52	68	2	1,312	25,940
DAVIS-----	10,587	5,092	24	125	92	1,019	16,939
DEL MAR-----	1,266	1,225	2	40	2	235	2,770
DEL REY OAKS-----	461	356	5	3	0	48	873
DELANO-----	3,101	1,434	13	7	17	76	4,648
DESERT HOT SPRINGS-----	890	733	4	2	0	72	1,701
DINUBA-----	1,595	1,007	9	2	5	59	2,677
DIXON-----	914	710	2	1	0	59	1,686
DORRIS-----	260	100	0	0	0	18	378
DOS PALOS-----	616	333	0	0	0	24	973
DOWNEY-----	20,384	17,422	275	81	61	1,942	40,165
DUARTE-----	2,698	2,134	29	31	9	361	5,262
DUNSMUIR-----	888	292	1	7	0	20	1,208
EL CAJON-----	11,806	10,512	146	65	9	1,467	24,005
EL CENTRO-----	3,631	3,258	16	34	7	427	7,373
EL CERRITO-----	8,139	4,672	50	51	6	562	13,480
EL MONTE-----	12,272	6,090	189	66	140	993	19,750
EL SEGUNDO-----	3,208	3,527	27	44	3	366	7,175
ELSINORE-----	1,192	528	7	61	0	62	1,850
EMERYVILLE-----	990	285	3	9	2	76	1,365

REPORT OF REGISTRATION—CITIES—Continued

CITIES	Democratic	Republican	American Independent	Peace and Freedom	Miscellaneous	Declined to State	Total
ESCALON-----	577	383	0	0	1	31	992
ESCONDIDO-----	7,416	10,335	90	30	18	1,368	19,257
ETNA-----	181	134	0	0	0	13	328
EUREKA-----	7,084	4,459	16	41	3	551	12,154
EXETER-----	816	790	8	1	1	34	1,650
FAIRFAX-----	2,554	1,114	6	49	1	430	4,154
FAIRFIELD-----	7,370	3,982	43	21	1	604	12,021
FARMERSVILLE-----	478	162	20	0	0	30	690
FERNDALE-----	344	371	0	5	0	22	742
FILLMORE-----	1,211	833	7	3	37	64	2,155
FIREBAUGH-----	580	133	1	0	0	24	738
FOLSOM-----	1,802	1,139	19	6	0	106	3,072
FONTANA-----	5,166	2,212	75	21	7	314	7,795
FORT BRAGG-----	1,252	620	6	10	1	73	1,962
FORT JONES-----	140	121	1	0	0	11	273
FORTUNA-----	1,082	884	1	6	0	80	2,053
FOSTER CITY-----	3,078	3,091	4	9	4	482	6,668
FOUNTAIN VALLEY-----	7,618	9,746	70	29	19	1,295	18,777
FOWLER-----	516	226	6	2	3	30	783
FREMONT-----	25,128	13,758	138	100	45	2,559	41,728
FRESNO-----	46,750	22,234	432	181	73	2,390	72,060
FULLERTON-----	17,487	22,308	166	142	46	2,476	42,625
GALT-----	708	441	6	3	0	41	1,199
GARDEN GROVE-----	23,419	20,260	406	133	18	2,910	47,146
GARDENA-----	10,378	4,883	103	48	22	997	16,431
GILROY-----	2,643	1,653	6	6	23	211	4,542
GLENDALE-----	22,962	38,458	276	135	82	2,742	64,655
GLENDORA-----	5,831	8,101	69	31	6	756	14,794
GONZALES-----	529	225	2	2	1	8	767
GRASS VALLEY-----	1,385	1,126	2	6	0	94	2,613
GREENFIELD-----	426	259	4	4	0	21	714
GRIDLEY-----	693	524	5	0	1	30	1,253
GROVER CITY-----	1,498	682	17	10	1	111	2,319
GUADALUPE-----	585	153	0	1	4	12	755
GUSTINE-----	960	331	1	0	0	41	1,333
HALF MOON BAY-----	1,195	807	5	10	0	160	2,177

REPORT OF REGISTRATION—CITIES—Continued

CITIES	Democratic	Republican	American Independent	Peace and Freedom	Miscellaneous	Declined to State	Total
HANFORD-----	3,569	2,055	11	4	2	183	5,824
HAWAIIAN GARDENS-----	1,376	411	22	2	78	143	2,032
HAWTHORNE-----	12,393	7,167	234	65	42	1,295	21,196
HAYWARD-----	23,214	9,280	91	156	62	2,340	35,143
HEALDSBURG-----	1,386	1,134	7	11	2	97	2,637
HEMET-----	3,694	5,300	30	5	0	232	9,261
HERCULES-----	57	37	1	1	0	2	98
HERMOSA BEACH-----	5,002	3,711	41	126	28	971	9,879
HIDDEN HILLS-----	282	492	0	1	0	37	812
HILLSBOROUGH-----	1,284	3,921	1	4	1	228	5,439
HOLLISTER-----	1,893	1,122	19	3	3	67	3,107
HOLTVILLE-----	726	462	4	5	2	40	1,239
HUNTINGTON BEACH-----	25,189	28,598	241	205	21	3,879	58,133
HUNTINGTON PARK-----	5,765	3,473	166	23	60	386	9,873
HURON-----	242	37	3	0	1	3	286
IMPERIAL-----	630	425	0	3	0	55	1,113
IMPERIAL BEACH-----	2,960	1,840	42	22	21	481	5,366
INDIAN WELLS-----	67	396	0	1	0	18	482
INDIO-----	2,588	1,482	10	16	29	179	4,304
INDUSTRY-----	67	61	3	1	0	10	142
INGLEWOOD-----	20,530	12,502	178	105	58	1,805	35,178
IONE-----	484	299	0	1	0	20	804
IRVINE-----	3,727	5,993	28	9	12	797	10,566
IRWINDALE-----	256	44	2	8	10	12	332
ISLETON-----	235	72	0	1	0	14	322
JACKSON-----	748	404	8	0	2	35	1,197
KERMAN-----	546	215	17	1	0	19	798
KING CITY-----	530	607	6	1	0	43	1,187
KINGSBURG-----	844	803	4	1	0	72	1,724
LA HABRA-----	8,202	9,210	95	41	26	914	18,488
LA MESA-----	9,825	10,877	96	64	13	1,379	22,254
LA MIRADA-----	6,709	6,101	72	32	28	595	13,537
LA PALMA-----	2,324	2,552	18	2	1	245	5,142
LA PUENTE-----	6,583	1,814	55	32	84	460	9,028
LA VERNE-----	3,004	3,436	33	17	11	315	6,816
LAFAYETTE-----	4,057	7,071	22	27	0	529	11,706

REPORT OF REGISTRATION—CITIES—Continued

CITIES	Democratic	Republican	American Independent	Peace and Freedom	Miscellaneous	Declined to State	Total
LAGUNA BEACH-----	3,668	5,196	15	74	1	914	9,868
LAKEPORT-----	752	727	8	0	1	51	1,539
LAKEWOOD-----	22,289	12,653	226	125	34	1,798	37,125
LARKSPUR-----	2,693	2,781	11	26	3	487	6,001
LAWDALE-----	4,494	1,987	70	23	18	528	7,120
LEMOORE-----	966	594	0	1	1	94	1,656
LINCOLN-----	745	396	7	0	0	44	1,192
LINDSAY-----	935	842	3	2	1	45	1,828
LIVE OAK-----	496	267	0	1	5	34	803
LIVERMORE-----	9,852	8,160	63	20	6	925	19,026
LIVINGSTON-----	561	181	0	2	1	33	778
LODI-----	6,063	7,123	62	5	4	524	13,781
LOMA LINDA-----	625	2,630	6	7	2	266	3,536
LOMITA-----	4,235	2,699	55	12	22	465	7,488
LOMPOC-----	4,484	3,293	52	18	3	435	8,285
LONG BEACH-----	85,589	66,339	701	745	220	8,817	162,411
LOS ALAMITOS-----	2,265	1,899	10	15	4	220	4,413
LOS ALTOS-----	5,552	8,533	15	43	0	834	14,977
LOS ALTOS HILLS-----	1,533	2,254	11	13	0	258	4,069
LOS ANGELES-----	713,055	356,513	3,136	6,270	5,371	59,963	1,144,308
LOS BANOS-----	2,414	926	7	7	0	124	3,478
LOS GATOS-----	5,012	5,724	21	63	5	747	11,572
LOYALTON-----	281	101	0	0	0	21	403
LYNWOOD-----	8,812	4,408	146	41	34	638	14,079
MADERA-----	3,915	1,891	31	2	8	87	5,934
MANHATTAN BEACH-----	8,685	9,098	70	106	27	1,385	19,371
MANTECA-----	3,755	1,836	30	8	2	352	5,983
MARICOPA-----	174	58	3	1	0	4	240
MARTINEZ-----	5,395	2,814	21	30	3	413	8,676
MARYSVILLE-----	2,068	1,652	2	7	44	124	3,897
MAYWOOD-----	2,908	1,170	48	6	37	160	4,329
McFARLAND-----	616	229	8	0	3	18	874
MENDOTA-----	445	90	0	0	0	19	554
MENLO PARK-----	6,492	7,313	12	45	2	821	14,685
MERCED-----	5,277	3,052	32	26	7	403	8,797
MILL VALLEY-----	4,109	2,693	9	51	5	668	7,535

REPORT OF REGISTRATION—CITIES—Continued

CITIES	Democratic	Republican	American Independent	Peace and Freedom	Miscellaneous	Declined to State	Total
MILLBRAE-----	5,773	4,389	28	22	2	461	10,675
MILPITAS-----	6,231	2,698	41	18	26	730	9,744
MODESTO-----	18,062	11,500	78	45	12	1,083	30,780
MONROVIA-----	5,795	6,144	67	37	15	610	12,668
MONTAGUE-----	201	114	4	2	0	11	332
MONTCLAIR-----	3,772	2,697	38	29	8	345	6,889
MONTE SERENO-----	598	905	2	8	0	114	1,627
MONTEBELLO-----	12,671	4,341	48	39	258	728	18,085
MONTEREY-----	5,484	3,854	35	87	6	842	10,308
MONTEREY PARK-----	12,956	6,391	34	48	215	1,162	20,806
MORGAN HILL-----	1,214	830	2	8	7	101	2,162
MORRO BAY-----	2,168	1,930	16	27	0	176	4,317
MOUNT SHASTA-----	819	340	0	3	1	30	1,193
MOUNTAIN VIEW-----	13,394	9,470	57	116	22	2,175	25,234
NAPA-----	11,928	7,662	84	69	10	798	20,551
NATIONAL CITY-----	6,601	3,232	78	28	229	688	10,856
NEEDLES-----	944	425	7	0	0	62	1,438
NEVADA CITY-----	701	596	2	3	0	55	1,357
NEWARK-----	5,941	2,559	53	16	20	673	9,262
NEWMAN-----	666	221	0	0	0	22	909
NEWPORT BEACH-----	8,643	22,981	103	100	8	1,770	33,605
NORCO-----	2,415	1,612	64	4	0	182	4,277
NORWALK-----	18,973	7,348	333	95	271	1,426	28,446
NOVATO-----	5,942	5,428	17	25	1	999	12,412
OAKDALE-----	1,566	1,125	5	2	1	75	2,774
OAKLAND-----	108,187	39,833	229	845	284	7,773	157,151
OCEANSIDE-----	7,935	8,278	99	41	6	1,131	17,490
OJAI-----	1,426	1,304	5	25	1	115	2,876
ONTARIO-----	11,856	9,159	86	32	88	692	21,913
ORANGE-----	13,071	18,897	277	94	19	2,314	34,672
ORANGE COVE-----	545	132	7	0	1	19	704
ORLAND-----	754	591	7	5	0	50	1,407
OROVILLE-----	1,737	1,393	7	6	1	120	3,264
OXNARD-----	14,224	7,959	91	70	407	1,333	24,084
PACIFIC GROVE-----	3,438	3,061	19	88	1	544	7,151
PACIFICA-----	9,202	3,526	91	70	5	1,031	13,925

REPORT OF REGISTRATION—CITIES—Continued

CITIES	Democratic	Republican	American Independent	Peace and Freedom	Miscellaneous	Declined to State	Total
PALM SPRINGS-----	5,114	5,950	17	30	2	725	11,838
PALMDALE-----	2,173	1,876	29	10	4	204	4,296
PALO ALTO-----	16,355	13,651	34	207	19	2,228	32,494
PALOS VERDES ESTATES-----	1,897	5,604	17	11	11	428	7,968
PARAMOUNT-----	6,080	2,683	99	38	33	516	9,449
PARLIER-----	419	50	2	0	7	11	489
PASADENA-----	22,212	26,493	161	164	120	2,564	51,714
PASO ROBLES-----	1,174	1,555	5	0	0	69	2,803
PATTERSON-----	703	391	0	0	64	25	1,183
PERRIS-----	1,163	576	7	5	0	115	1,866
PETALUMA-----	6,932	4,800	49	89	1	567	12,438
PICO RIVERA-----	14,046	3,424	92	44	442	653	18,701
PIEDMONT-----	2,198	4,581	20	20	3	230	7,052
PINOLE-----	3,653	1,874	43	19	6	265	5,860
PISMO BEACH-----	1,179	963	8	8	3	119	2,280
PITTSBURG-----	7,372	1,384	14	25	0	310	9,105
PLACENTIA-----	4,652	5,733	34	10	49	654	11,132
PLACERVILLE-----	1,539	1,154	15	2	0	90	2,800
PLEASANT HILL-----	6,549	4,972	19	41	2	559	12,142
PLEASANTON-----	5,569	5,799	25	7	3	584	11,987
PLYMOUTH-----	137	53	0	1	1	7	199
POINT ARENA-----	89	100	1	1	0	11	202
POMONA-----	17,235	11,745	144	97	126	1,457	30,804
PORT HUENEME-----	2,346	1,824	25	20	21	312	4,548
PORTERVILLE-----	2,120	1,895	22	10	6	126	4,179
PORTOLA-----	751	197	4	3	0	37	992
PORTOLA VALLEY-----	754	1,526	2	5	0	95	2,382
RED BLUFF-----	1,968	1,192	29	11	0	142	3,342
REDDING-----	4,769	3,027	11	14	3	295	8,119
REDLANDS-----	6,812	8,809	36	26	17	836	16,536
REDONDO BEACH-----	13,155	9,503	168	187	43	1,872	24,928
REDWOOD CITY-----	14,277	9,425	92	109	5	1,675	25,583
REEDLEY-----	1,784	1,454	13	3	3	69	3,326
RIALTO-----	6,020	3,960	69	18	12	459	10,538
RICHMOND-----	23,969	6,059	98	124	35	1,113	31,398
RIDGECREST-----	2,040	1,623	27	10	0	180	3,880

REPORT OF REGISTRATION—CITIES—Continued

CITIES	Democratic	Republican	American Independent	Peace and Freedom	Miscellaneous	Declined to State	Total
RIO DELL-----	664	290	2	7	0	43	1,006
RIO VISTA-----	784	607	5	0	0	34	1,430
RIPON-----	503	635	5	0	0	57	1,200
RIVERBANK-----	931	222	2	0	0	35	1,190
RIVERSIDE-----	33,476	26,124	190	222	34	3,461	63,507
ROCKLIN-----	836	407	5	4	0	66	1,318
ROHNERT PARK-----	1,768	952	12	31	0	211	2,974
ROLLING HILLS-----	244	872	2	2	2	55	1,177
ROLLING HILLS ESTATES-----	1,075	2,482	5	7	6	175	3,750
ROSEMEAD-----	8,504	4,002	73	41	141	701	13,462
ROSEVILLE-----	6,100	2,410	30	19	0	258	8,817
ROSS-----	586	893	1	2	0	89	1,571
SACRAMENTO-----	81,368	35,992	371	829	160	4,893	123,613
SAINT HELENA-----	849	995	9	0	0	65	1,918
SALINAS-----	13,448	8,827	179	64	11	975	23,504
SAN ANSELMO-----	4,274	2,579	14	56	6	517	7,446
SAN BERNARDINO-----	24,739	12,912	207	95	70	1,691	39,714
SAN BRUNO-----	9,802	4,655	33	35	5	818	15,348
SAN CARLOS-----	6,652	6,671	23	40	3	754	14,143
SAN CLEMENTE-----	2,676	6,011	28	21	2	608	9,346
SAN DIEGO-----	157,479	136,020	1,027	1,241	924	22,990	319,681
SAN DIMAS-----	3,069	2,916	35	16	13	338	6,387
SAN FERNANDO-----	3,166	1,720	38	14	368	203	5,509
SAN FRANCISCO-----	213,791	84,178	488	2,067	60	20,462	321,046
SAN GABRIEL-----	6,833	6,516	43	26	71	573	14,062
SAN JACINTO-----	1,067	831	7	6	0	76	1,987
SAN JOAQUIN-----	202	59	1	0	1	11	274
SAN JOSE-----	110,472	66,210	533	892	1,467	11,445	191,019
SAN JUAN BAUTISTA-----	336	105	3	0	7	17	468
SAN JUAN CAPISTRANO-----	1,128	2,426	11	1	0	221	3,787
SAN LEANDRO-----	20,507	10,256	120	64	14	1,581	32,542
SAN LUIS OBISPO-----	9,365	7,188	36	132	8	1,263	17,992
SAN MARCOS-----	1,069	1,572	9	9	1	221	2,881
SAN MARINO-----	1,218	7,321	11	9	7	253	8,819
SAN MATEO-----	20,125	16,719	63	120	7	2,190	39,224
SAN PABLO-----	5,149	1,389	64	31	14	318	6,965

REPORT OF REGISTRATION—CITIES—Continued

CITIES	Democratic	Republican	American Independent	Peace and Freedom	Miscellaneous	Declined to State	Total
SAN RAFAEL-----	9,458	8,705	20	61	8	1,319	19,571
SAND CITY-----	71	16	0	1	0	13	101
SANGER-----	2,580	775	6	5	5	93	3,464
SANTA ANA-----	27,387	24,644	366	211	145	4,323	57,076
SANTA BARBARA-----	19,500	16,191	54	245	79	3,209	39,278
SANTA CLARA-----	21,488	10,855	123	119	60	2,277	34,922
SANTA CRUZ-----	11,142	6,671	46	265	24	1,332	19,480
SANTA FE SPRINGS-----	3,640	1,088	23	9	70	245	5,075
SANTA MARIA-----	6,876	5,363	54	30	38	501	12,862
SANTA MONICA-----	22,995	19,144	154	476	91	3,502	46,362
SANTA PAULA-----	3,440	2,523	26	5	115	178	6,287
SANTA ROSA-----	15,096	14,246	92	203	13	1,330	30,980
SARATOGA-----	5,176	8,710	25	45	4	854	14,814
SAUSALITO-----	2,368	1,510	1	30	0	583	4,492
SCOTTS VALLEY-----	990	1,484	15	10	6	141	2,646
SEAL BEACH-----	6,926	9,878	22	51	3	844	17,724
SEASIDE-----	4,643	1,431	20	38	2	459	6,593
SEBASTOPOL-----	1,094	905	11	11	2	95	2,118
SELMA-----	1,669	890	17	4	1	55	2,636
SHAFTER-----	1,016	893	14	0	0	58	1,981
SIERRA MADRE-----	2,327	3,717	21	35	12	435	6,547
SIGNAL HILL-----	1,194	830	21	10	2	139	2,196
SIMI VALLEY-----	11,394	10,263	138	67	46	1,101	23,009
SOLEDAD-----	765	236	0	4	5	23	1,033
SONOMA-----	1,249	1,422	16	3	0	96	2,786
SONORA-----	1,047	791	5	3	0	37	1,883
SOUTH EL MONTE-----	2,842	809	30	11	63	178	3,933
SOUTH GATE-----	13,621	7,432	224	59	31	887	22,254
SOUTH LAKE TAHOE-----	2,523	1,917	35	32	2	507	5,016
SOUTH PASADENA-----	4,264	7,835	45	42	33	729	12,948
SOUTH SAN FRANCISCO-----	13,465	4,687	74	45	0	940	19,211
STANTON-----	4,440	3,331	57	16	21	529	8,394
STOCKTON-----	27,325	14,765	146	118	127	2,283	44,764
SUISUN CITY-----	416	141	1	4	0	27	589
SUNNYVALE-----	22,478	16,778	98	103	35	3,263	42,755
SUSANVILLE-----	2,148	964	15	3	0	112	3,242

REPORT OF REGISTRATION—CITIES—Continued

CITIES	Democratic	Republican	American Independent	Peace and Freedom	Miscellaneous	Declined to State	Total
SUTTER CREEK-----	550	378	0	0	0	21	949
TAFT-----	1,118	808	19	4	0	53	2,002
TEHACHAPI-----	1,026	586	7	2	0	47	1,668
TEHAMA-----	64	60	1	0	0	5	130
TEMPLE CITY-----	6,946	7,317	74	29	18	694	15,078
THOUSAND OAKS-----	7,770	10,827	97	50	18	1,184	19,946
TIBURON-----	1,456	1,784	4	9	1	276	3,530
TORRANCE-----	32,359	28,612	383	151	115	4,016	65,636
TRACY-----	3,718	2,089	27	4	1	225	6,064
TRINIDAD-----	147	80	0	2	0	25	254
TULARE-----	3,594	1,750	25	2	2	117	5,490
TULELAKE-----	176	136	0	0	0	4	316
TURLOCK-----	3,693	3,304	4	14	10	230	7,255
TUSTIN-----	3,652	6,333	70	38	2	933	11,028
UKIAH-----	2,454	2,003	20	1	2	177	4,657
UNION CITY-----	5,214	1,737	23	16	76	544	7,610
UPLAND-----	6,460	7,895	20	22	22	579	14,998
VACAVILLE-----	4,750	3,172	22	21	0	362	8,327
VALLEJO-----	19,793	6,732	150	100	2	535	27,312
VENTURA-----	14,609	12,617	81	117	37	1,379	28,840
VERNON-----	40	24	1	0	1	3	69
VICTORVILLE-----	1,730	1,560	16	9	5	180	3,500
VILLA PARK-----	465	1,358	8	2	1	104	1,938
VISALIA-----	6,236	5,979	54	39	9	470	12,787
VISTA-----	4,441	6,286	67	26	9	718	11,547
WALNUT-----	1,089	1,172	8	4	1	120	2,394
WALNUT CREEK-----	7,971	14,512	18	44	2	1,063	23,610
WASCO-----	1,623	735	18	2	0	41	2,419
WATERFORD-----	494	247	13	0	0	20	774
WATSONVILLE-----	3,302	2,075	10	9	9	231	5,636
WEED-----	1,099	264	3	2	0	35	1,403
WEST COVINA-----	14,958	13,371	158	90	38	1,469	30,084
WESTMINSTER-----	12,694	9,823	170	55	25	1,405	24,172
WESTMORLAND-----	241	98	0	2	0	8	349
WHEATLAND-----	294	164	0	1	8	19	486
WHITTIER-----	14,827	20,288	165	93	80	1,448	36,901

REPORT OF REGISTRATION—CITIES—Continued

CITIES	Democratic	Republican	American Independent	Peace and Freedom	Miscellaneous	Declined to State	Total
WILLIAMS-----	368	228	0	0	0	16	612
WILLITS-----	688	427	5	2	0	52	1,174
WILLOWS-----	1,159	762	4	1	0	40	1,966
WINTERS-----	574	299	0	1	3	49	926
WOODLAKE-----	609	241	11	0	0	18	879
WOODLAND-----	5,194	3,629	11	33	55	254	9,176
WOODSIDE-----	944	1,695	6	10	0	162	2,817
YORBA LINDA-----	2,803	5,025	44	19	3	547	8,441
YOUNTVILLE-----	747	472	1	1	0	42	1,263
YREKA-----	1,330	1,096	2	4	0	91	2,523
YUBA CITY-----	2,906	2,402	7	11	11	234	5,571
TOTAL, CITIES-----	3,661,706	2,465,456	24,224	27,094	16,744	359,865	6,555,089
PERCENTAGES-----	55.9	37.6	.4	.4	.3	5.5	
TOTAL, UNINCORPORATED---	1,089,689	835,516	10,232	7,853	3,919	101,047	2,048,256
PERCENTAGES-----	53.2	40.8	.5	.4	.2	4.9	
GRAND TOTAL-----	4,751,395	3,300,972	34,456	34,947	20,663	460,912	8,603,345
PERCENTAGES-----	55.2	38.4	.4	.4	.2	5.4	