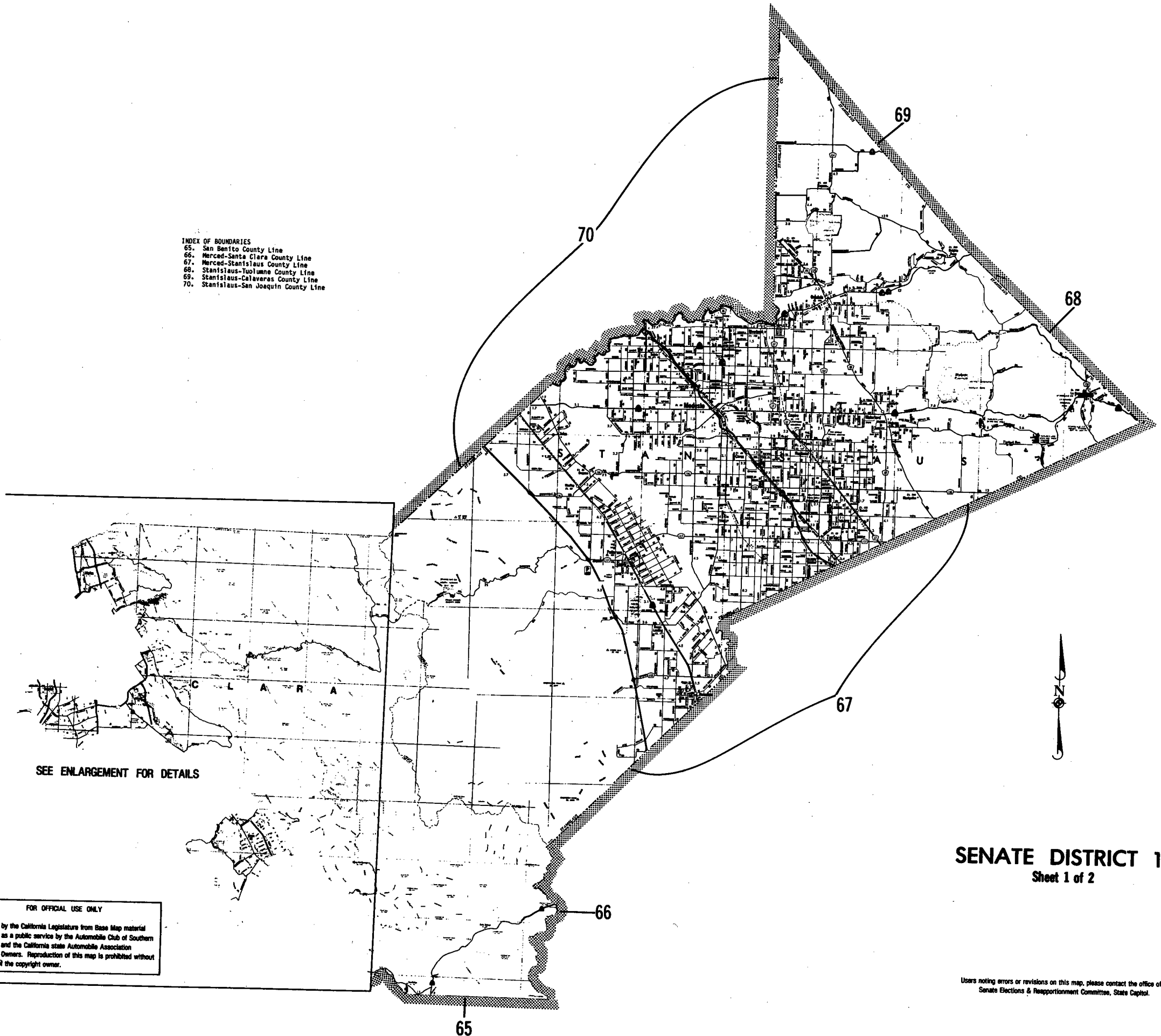


INDEX OF BOUNDARIES  
 65. San Benito County Line  
 66. Merced-Santa Clara County Line  
 67. Merced-Stanislaus County Line  
 68. Stanislaus-Tuolumne County Line  
 69. Stanislaus-Calaveras County Line  
 70. Stanislaus-San Joaquin County Line

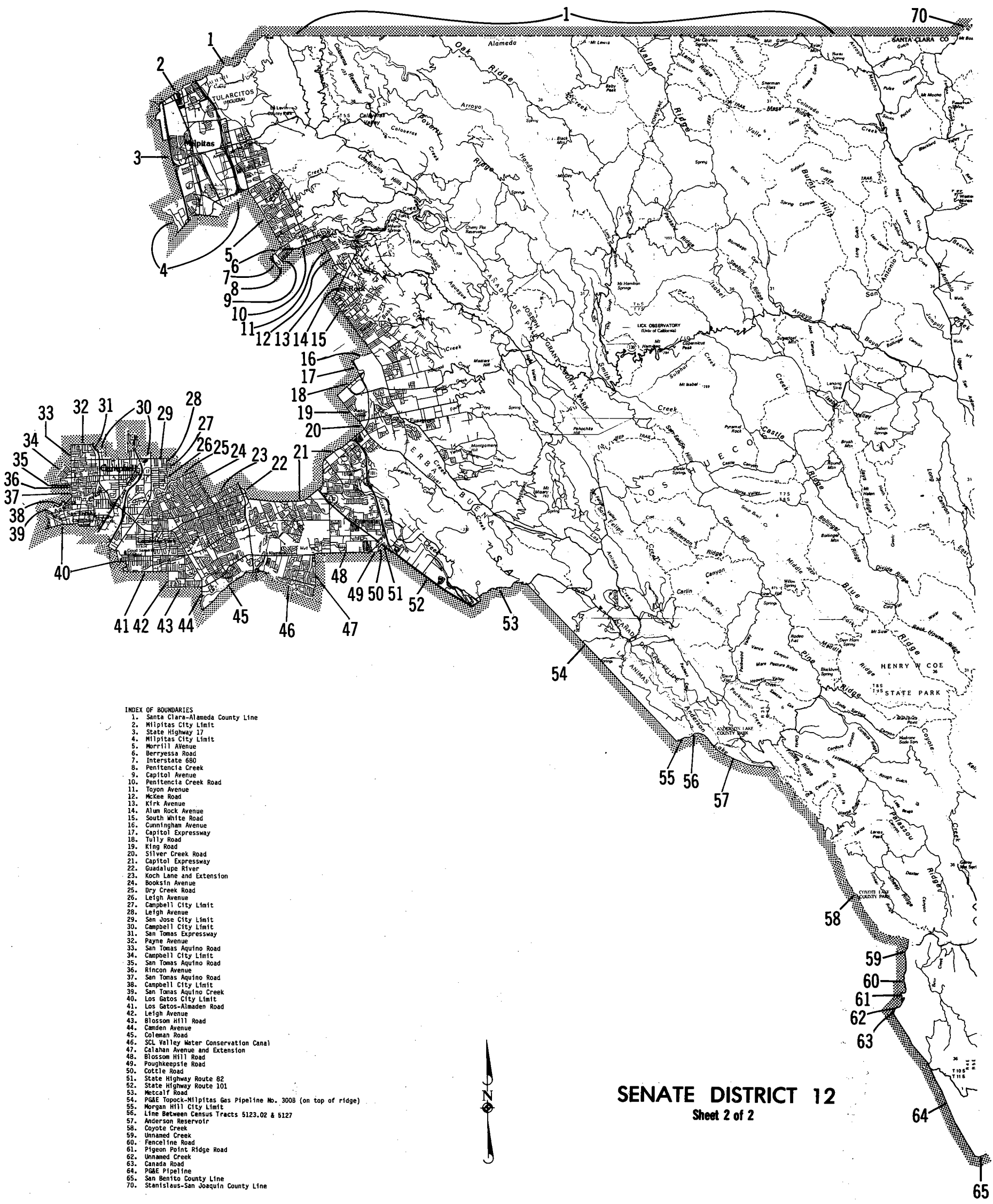


SEE ENLARGEMENT FOR DETAILS

FOR OFFICIAL USE ONLY  
 Published by the California Legislature from Base Map material  
 furnished as a public service by the Automobile Club of Southern  
 California and the California State Automobile Association  
 Copyright Owners. Reproduction of this map is prohibited without  
 consent of the copyright owner.

SENATE DISTRICT 12  
 Sheet 1 of 2

Users noting errors or revisions on this map, please contact the office of the  
 Senate Elections & Reapportionment Committee, State Capitol.



- INDEX OF BOUNDARIES**
1. Santa Clara-Alameda County Line
  2. Milpitas City Limit
  3. State Highway 17
  4. Milpitas City Limit
  5. Morrill Avenue
  6. Berryessa Road
  7. Interstate 680
  8. Penitencia Creek
  9. Capitol Avenue
  10. Penitencia Creek Road
  11. Toyon Avenue
  12. McKee Road
  13. Kirk Avenue
  14. Alum Rock Avenue
  15. South White Road
  16. Cunningham Avenue
  17. Capitol Expressway
  18. Tully Road
  19. King Road
  20. Silver Creek Road
  21. Capitol Expressway
  22. Guadalupe River
  23. Koch Lane and Extension
  24. Booksin Avenue
  25. Dry Creek Road
  26. Leigh Avenue
  27. Campbell City Limit
  28. Leigh Avenue
  29. San Jose City Limit
  30. Campbell City Limit
  31. San Tomas Expressway
  32. Payne Avenue
  33. San Tomas Aquino Road
  34. Campbell City Limit
  35. San Tomas Aquino Road
  36. Rincon Avenue
  37. San Tomas Aquino Road
  38. Campbell City Limit
  39. San Tomas Aquino Creek
  40. Los Gatos City Limit
  41. Los Gatos-Almaden Road
  42. Leigh Avenue
  43. Blossom Hill Road
  44. Camden Avenue
  45. Coleman Road
  46. SCL Valley Water Conservation Canal
  47. Calahan Avenue and Extension
  48. Blossom Hill Road
  49. Poughkeepsie Road
  50. Cottle Road
  51. State Highway Route 82
  52. State Highway Route 101
  53. Metcalf Road
  54. PG&E Topock-Milpitas Gas Pipeline No. 3008 (on top of ridge)
  55. Morgan Hill City Limit
  56. Line Between Census Tracts 5123.02 & 5127
  57. Anderson Reservoir
  58. Coyote Creek
  59. Unnamed Creek
  60. Fancelline Road
  61. Pigeon Point Ridge Road
  62. Unnamed Creek
  63. Canada Road
  64. PG&E Pipeline
  65. San Benito County Line
  70. Stanislaus-San Joaquin County Line

**SENATE DISTRICT 12**  
 Sheet 2 of 2

Users noting errors or revisions on this map, please contact the office of the Senate Elections & Reapportionment Committee, State Capitol.